

# MEN-SMB2 device

## MEN-SMB2 device communication protocol

- Description
- Communication line configuration
- Communication station configuration
- I/O tag configuration
- Literature
- Changes and modifications
- Document revisions

### Description

MEN-SMB2 device protocol is used to control input-output peripherals with integrated SMB2 interface for computers produced by MEN.  
An example is [BL50W](#).

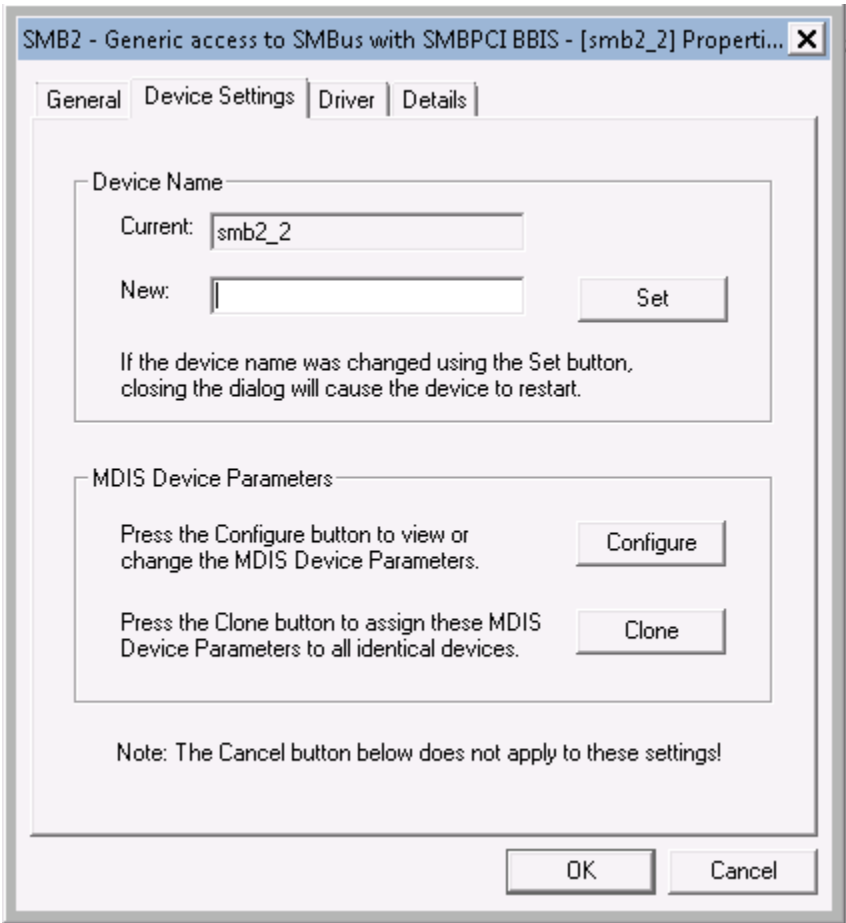
### Communication line configuration

- Communication line category: **API**

### Communication station configuration

#### Station address

Address of station is a text identifier of the SMB2 interface. Its name can be found in "Device Manager", Device Settings tab.



#### Station protocol parameters

Parameter	Meaning	Default value
Full Debug	Logging is enhanced with listings that enable fast error detection.	NO

## I/O tag configuration

---

Possible I/O tag types for variable mode: **Ai, Ao, Ci, Co, Di, Dout**

## I/O tag address

The address of the I/O tag is a 16-bit number entered in decimal format. For example, this protocol may be used to control the LED indicators. The address of the register, which is used to configure them, is "0x40". I/O tag address will be "64". This I/O tag will return 1-byte information about the state of LED indicators. If only one LED diode should be controlled, the I/O tag address can be for example "64.3". I/O tag defined in such a way will control the third LED diode.

## Literature

---

BL50W – Box PC for Wireless Applications ([User Manual](#))

## Changes and modifications

---

-

## Document revisions

---

- Ver. 1.0 – 25.5.2015 - the creation of the document



### Related pages:

[Communication protocols](#)