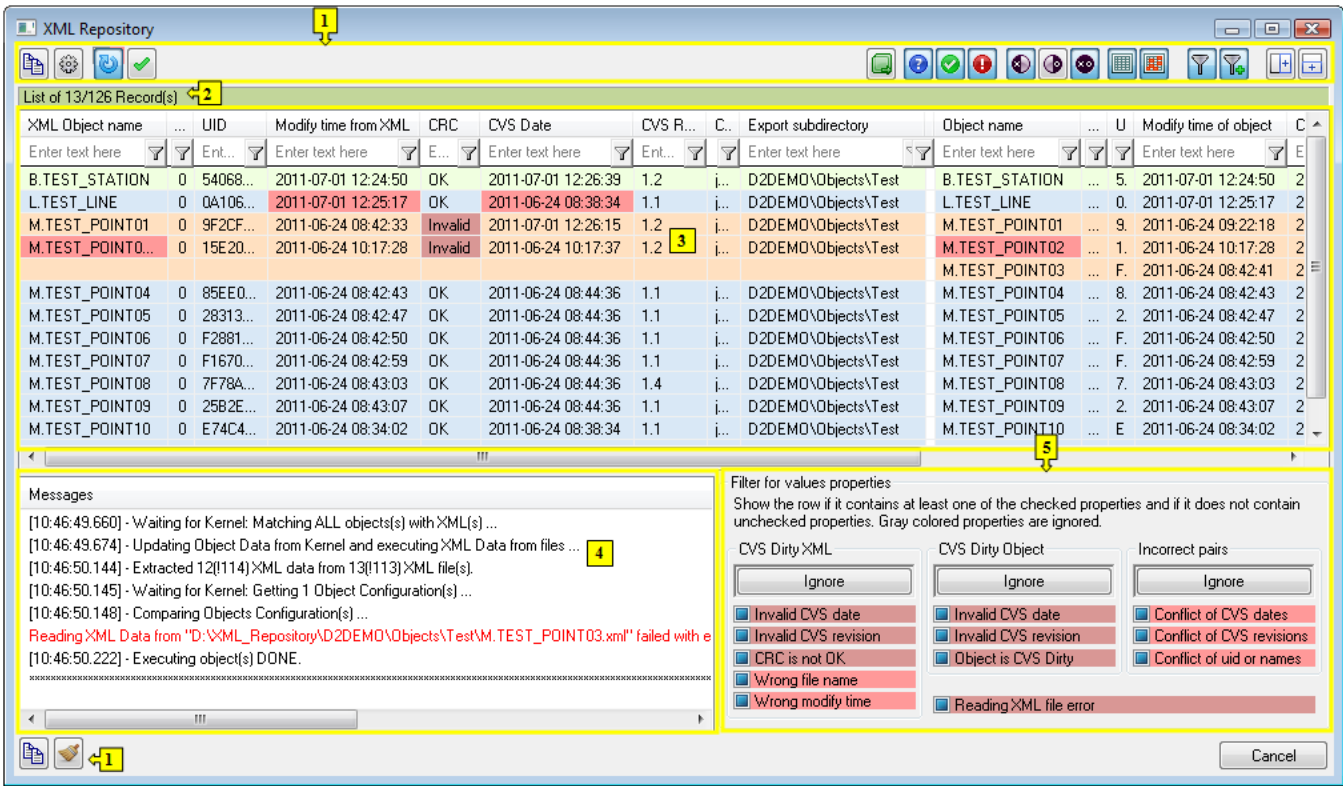


Module to display information

Module to display information from a comparison

Module can be opened only when the [XML Repository](#) is activated.



- | | |
|---|---------------------------------------|
| 1 | Toolbar |
| 2 | Status bar |
| 3 | List of CVS information |
| 4 | List of messages |
| 5 | A panel to set the filter parameters. |

Toolbar

	Copies the selected rows of CVS information into clipboard.
	XML Export settings or XML Repository settings .
	Refreshes the list of CVS information automatically after each change of the filter. If the list contains a lot of items we recommend to switch off this option.
	Refreshes the list of CVS information manually. If the input data have changed, the form of the button is like this . If the list does not contain a lot of items we recommend you to use automatic refresh. It changes into red when: <ul style="list-style-type: none">The filter conditions have changed (row filter, column filter and filter for value properties).
	Enables/disables all filter buttons, i.e. the list contains all items.
	Displays the items "Without data changes" (blue color), "Increase of object CVS version" (green color) or "Changes with conflicts" (red color).

	Displays the items "XML without object" (there are not any data about object), "Object without XML" (there are not data about XML) or "Pairs" (data about both XML and object).
	Displays the items with coloured values (red-coloured or pink-coloured cells in the row) or without coloured values.

Each of three above mentioned group of filter buttons represents a whole.

	Enables/disables the filter for columns in the list of CVS information.
	Enables/disables the filter for properties of values (the single cells) which represents the additional conditions.
	Enlarges the width of the list. It disables the filter for value properties if it was enabled.
	Enlarges the height of the list.

The icons bottom left:

	Copies the messages into clipboard.
	Deletes messages from the list.

Note: The following rules are valid when you copy CSV information or messages by button

- If any row is not selected in the list, the whole list will be copied.
- Use Ctrl+A to select all the rows.
- Use Ctrl+C to copy selected rows to a clipboard.

Status bar

On the top of panel there is status bar which shows:

- when the action is being executed:
 - the information about XML file when the XML files are being read
 - the information about the comparison of XML file with the object configuration of D2000 System
- after the action finished:
 - the information about the row count that conform to filter

List of CVS information

This list shows an information as a result from filtering according to the filter options (4).

One row can contain information:

- from **XML file**
 - name, HOBJ and UID of object saved as XML file
 - modify time of object from XML and CRC value of XML file
 - CVS date, revision and author, export subdirectory
- about **object from the configuration of D2000 System**
 - name, HOBJ and UID of object from the configuration of D2000 System
 - modify time of object
 - CVS date, revision and author, export subdirectory
 - CVS state of object
- about the **path to XML file** (expected path)

The groups of information are separated by one empty column. In the left part, there is the information concerning to XML file, in the right part, the information concerning the object from the configuration of D2000 System. The last cell contains the expected path to XML (expected owing to that the XML file need not exist).

Some cells are coloured differently. They represent **error value** (red-coloured) or they are **the part of error relation among values** (pink-coloured).

The rows as a whole can show:

- data **without changes**,
- **increase of object CVS version**,
- **changes with conflicts**.

Within the changes with conflicts, there is a special category that includes the rows indicating that data of particular XML files could not be read correctly. The particular row is emphasized by red color (darker) in the dialog window. At the same time, the text "(data reading error)" is written into the column for name of object, parsed from XML file.

Another possibility is to show the rows containing:

- **XML file without object** from configuration,
- **the object** from configuration **without XML** file,
- **a pair** (XML file is assigned to object from configuration).
- **rows with coloured values**
- **rows without coloured values**

All groups represents disjunctive sets of the whole.

The reasons of colouring is described in the topic [Evaluation of information](#).

Clicking by right mouse button on the list the following popup will display:

Select All	Ctrl+A
Copy	Ctrl+C
Show differences	Ctrl+D
Describe errors	Ctrl+E
History watch	Ctrl+H
Refresh	Ctrl+R
Default width of columns	
Default position of columns	
Clear filter bar	
Set Export subdir...	
XML Export...	
XML Export to Repository	

Select all	Selects all the rows in the list.
Copy	Copies the selected rows into clipboard.
Show differences	Initiates the program to show the different data .
Describe errors	Shows the brief description of attributes of selected row.
History watch	Shows the object history .
Refresh	Refreshes the selected rows. It is important after data of XML file on disc have changed.
Default width of columns	Returns the column width on initial one, i.e. before the values are saved into registers. This action is irreversible.
Default position of columns	Returns the positions of the columns on initial one, i.e. before the positions are saved into registers. This action is irreversible.
Clear filter bar	Clear filter.
Set Export subdir	Enables to change the value of the Export subdirectory to the selected object. It opens the question dialog window to set the value.
XML Export	Opens a dialog window to choose XML Export directory and exports the chosen objects to it according to selected export settings .
XML Export do Repository	Exports the selected objects into XML Repository directory.

Note: After the export of selected objects in CVS dialog box these data will be updated.


List of messages

This part of dialog window shows the following types of messages:




- **informative** (black color) - they inform about the activities concerning the comparison
- **error** (red color) - they inform about the errors

Filter for properties of values (for advanced users)



Clicking on button  activates the filter for value properties (the individual cells) which represents the additional conditions.

The attributes of filter for the value properties:

- the attribute can be required () , unwanted () or ignored () ,
- the row conforms to filter if it contains at least one of the required attributes and does not contain any unwanted attribute,
- the row conforms to filter if it does not contain any special attribute and the option **Show also the rows without presented properties** is checked off,
- the relation between this filter and the first and the second filters is AND.

Control buttons and copying

The **Module** can contain these buttons.

Button	Meaning
Import	Opens an acknowledgement dialog box and activates the import.
Cancel	Closes the dialog box without any action.

The buttons, which will be displayed, depend on a type of dialog window in which the module is placed ([XML Import](#), [XML Repository](#)).



Related pages:

[D2000 XML](#)
[XML Repository](#)
[Evaluation of information](#)