

# Export subdirectory

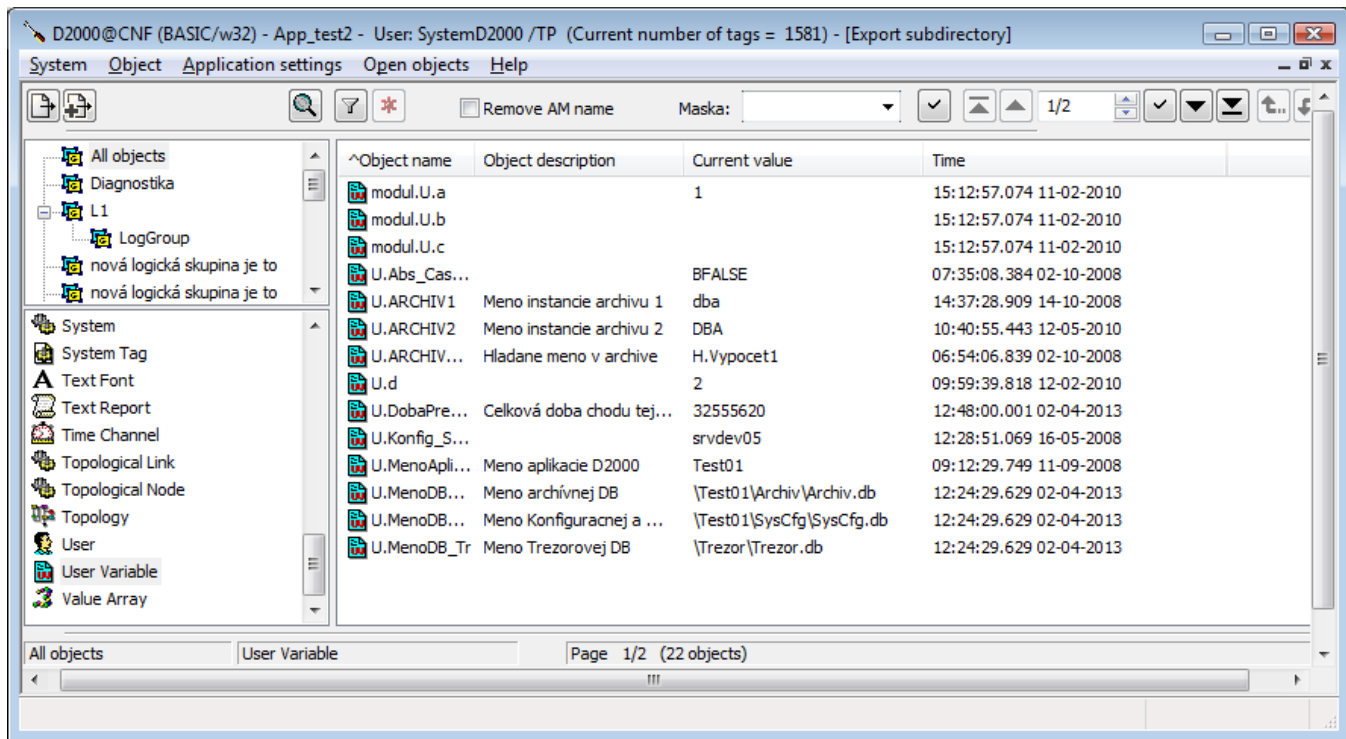
## Export subdirectory parameter

Parameter "**export subdirectory**" for the objects may be set in several ways:

1. Selecting the item **Setting parameter Export subdirectory** in **Objects** menu.
2. Setting the parameter as one of the basic configuration property [when editing object](#).

### Setting through Objects menu

Clicking on the item **Setting parameter Export subdirectory** in **Objects** menu in **D2000 CNF** opens the following dialog window.




**Export subdirectory** for the objects may be set as follows:

- According to [membership in logical group](#). The object must exist just in one [logical group](#), otherwise an empty string will be set. If the object belongs to the nested logical group, the value of "**export subdirectory**" is: "*logical\_group*" / "*logical\_group*".
- [Direct](#) setting.
- According to [CVS\Repository](#) directory.


Export subdirectory keeps the last set subdirectory.

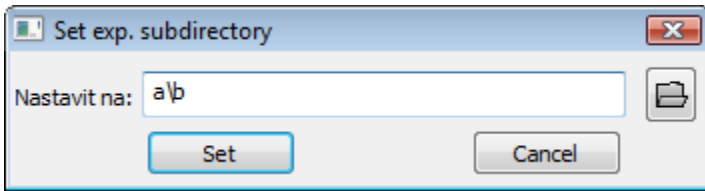
## Parameter settings

### Membership in logical group

1. Select an object which belongs to some logical group. If the object does not belong to any logical group you can insert it in the [configuration window](#), tab **Groups**.
2. Click on button  **Set Exp. subdirectory according to Log. group**. A modal window opens which informs about successful/failed setting of the parameter.
3. In the list of objects - column **Export subdirectory**, you can see the logical group at objects for which this parameter is set.


### Direct setting

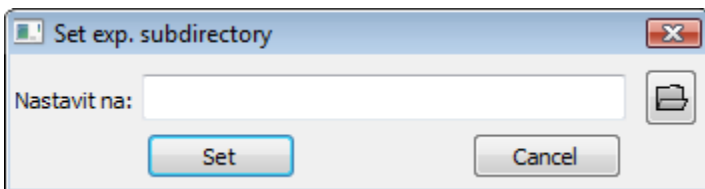
1. Click on button  **Set Exp. subdirectory**. It opens the modal window where you will set the subdirectory.




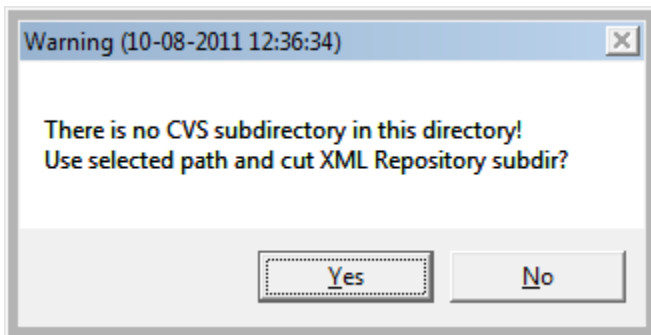
2. Write a path directly into text field, then push the button **Set**.
3. In the list of objects - column **Export subdirectory**, you can see the value of export subdirectory at objects for which this parameter is set.

## According to CVS\Repository directory

1. Click on button  **Set Exp. subdirectory**. It opens the modal window where you will set the subdirectory.




2. Then click on button . It opens the window where you will find the required directory containing CVS. Push the button **OK**. If CVS subdirectory with *Repository file* is not placed in that directory, the user can cancel the action or use the selected path but without the path to [XML Repository folder](#) at the beginning.



3. In the list of objects - column Export subdirectory, you can see the value of export subdirectory at objects for which this parameter is set.

## Setting in configuration window for object

The parameter is set in [the configuration window](#) for object (the parameter **Export subdir**) in two ways:

1. Direct entering to the edit field.
2. Clicking the button , which opens the window to search the required directory with CVS. Click the **OK** button to confirm your selection. If CVS subdirectory with *Repository file* is not placed in that directory, the user can cancel the action or use the selected path but without the path to [XML Repository folder](#) at the beginning.

### Related pages:

[Object menu](#)  
[Import from CNF](#)  
[Editing objects](#)