

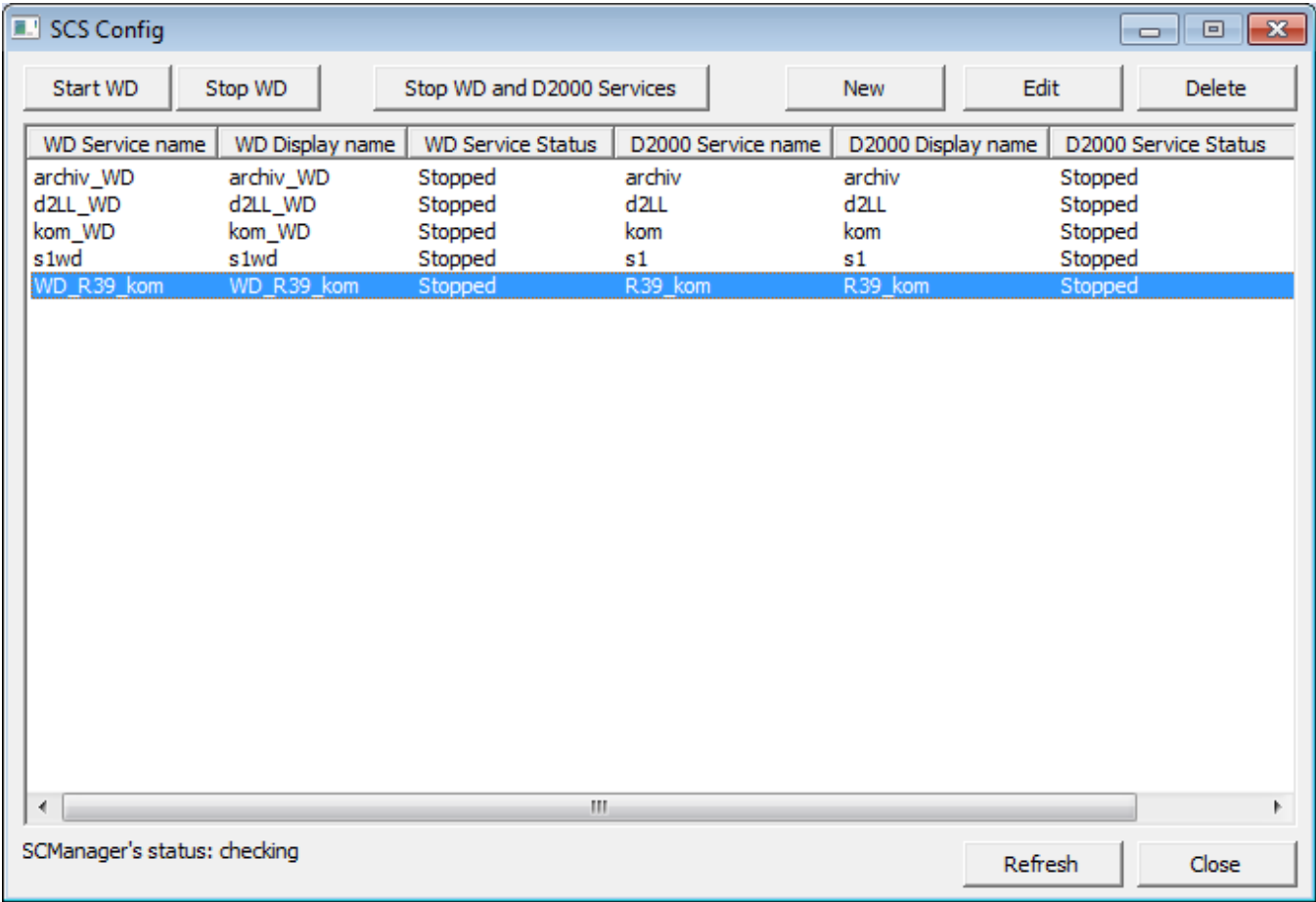
SCS Config utility

The utility **SCS Config** allows to create and manage a pair of services - the utility [StartCli](#) and a D2000 system process monitored by the utility **StartCli**.
To start the utility **SCS Config** , run the file *scsconfig.exe* located in the subdirectory **Bin** of the [installation directory](#).

- Utility description
- [Creating a new service](#)
- [Editing a service](#)
- [Starting a service](#)
- [Stopping a service](#)
- [Selecting a service](#)

Utility description

The utility **SCS Config** is a Windows application. Starting the file *scsconfig.exe* opens the following window:



The window contains a list of services monitored by the utility **Startcli**. The window allows users to:

- [create a new service](#)
- [edit the parameters of an existing service](#)
- [run a service](#)
- [stop a service](#)
- [delete a service](#)

The window also displays an information of the status of the **Service Manager** application - service database manager. Possible states:

- *UnLock* - unlocked
- *Lock* - locked

Pressing the key **F5** refreshes the list of services.

Creating a new service

Selecting the item **New** from the menu **System** in the **SCS Config** window opens the following window:

The image shows a Windows-style dialog box titled "SCS Config - Configuration dialog". It has a close button (X) in the top right corner. The dialog is divided into two main sections: "WD Service" on the left and "D2000 Service" on the right. At the top, there is a "Computer:" field with the value "WS1GOND1". In the "WD Service" section, there are fields for "Service name:" (WD_alarm), "Display name:" (WD_alarm), "File path:" (D:\D2000\D2000.EXE\bin\startcli.exe), "Startup type:" (Automatic), "Frequency:" (20), and "Init Frequency:" (5). Below these are radio buttons for "Local System Account" (selected) and "This Account", with a checkbox "Allow service to interact with desktop" under the first option. The "D2000 Service" section has a checkbox "Existing service" at the top right. It includes fields for "Service name:" (D2000_alarm), "Display name:" (D2000_alarm), "File path:" (D:\D2000\D2000.EXE\bin\Alarm.exe), a "Browse" button, "D2000 params:" (empty), and similar radio button and checkbox options as the WD Service section. At the bottom right are "Create" and "Cancel" buttons.

Computer

Computer name.

Existing service

Parameter is accessible only when a new WD Service is being created for an existing D2000 Service.

WD Service

Service name

Service name. Required parameter.

Note: see [below](#) for naming convention recommendations.

Display name

Name that will be displayed in the **Service Manager**. Required parameter.

Note: see [below](#) for naming convention recommendations.

File path

Full path to the *startcli.exe* file.

Startup type

Service startup type:

- *Automatic* - runs the service automatically during the Windows startup
- *Manual* - the service will be started manually (by user)
- *Disabled* - starting the service is disabled

Frequency

The **/F** parameter of the utility [StartCli](#).

Init Frequency

The **/T** parameter of the utility [StartCli](#).

Local System Account

Specifies that the service is logs on to the system account.

Allow service to interact with desktop

Possibility of interaction with user.

This Account

Allows to assign the service to an account.

D2000 Service

Service name

Service name. Required parameter.

Note: see [below](#) for naming convention recommendations.

Display name

Name that will be displayed in the **Service Manager**. Required parameter.

Note: see [below](#) for naming convention recommendations.

File path

Full path to a D2000 system executable file. Required parameter.

D2000 params

[Start parameters](#) of defined process. Use of the parameters depends on the process.

Local System Account

Specifies that the service is logs on to the system account.

Allow service to interact with desktop

Possibility of interaction with user.

This Account

Allows to assign the service to an account.

Note: When you assign the service to the account, you have to define the parameter **Password** (cannot be an empty string).

Editing a service

Select required service in the **SCS Config** window and click the button **Edit**. There are the same rules for editing as described in [creating a new service](#).

WARNING

The parameter **Service name** cannot be modified at all.

Starting a service

Select required service in the **SCS Config** window and click the button **Start WD**.

Stopping a service

Select required service in the **SCS Config** window and click the button:

- **Stop WD** - if you want to stop only the monitoring service ([StartCli utility](#)). D2000 process will not be stopped.
- **Stop WD and D2000 Services** - if you want to stop both the monitoring service ([StartCli utilita](#)) and D2000 service. Then, D2000 service will be stopped too.

Deleting a service

Select required service in the **SCS Config** window and click the button **Delete**.

Naming convention recommendations.

The goal is to define a convention so that multiple processes (KOM, EVH, ARC, others) of multiple applications can run on a remote computer; including non-D2000 processes that cooperate with the D2000.

We recommend not to use spaces and give the same name for both *Service name* and *Display name*.

Instance processes:

Watch dog	=>	D2WD_<APPLICATION>_<Process>.<SUFFIX>_<instancia>
D2000 proces	=>	D2000_<APPLICATION>_<Process>.<SUFFIX>_<instancia>

Examples:

D2WD_MES_ReportGenerator.EVH_1

D2000_MES_ReportGenerator.EVH_1

D2WD_OD_Sysprof.KOM_2
D2000_OD_Sysprof.KOM_2

Non-instance processes:

Watch dog	=>	D2WD_<APPLICATION>_<Process>.<SUFFIX>
D2000 proces	=>	D2000_<APPLICATION>_<Process>.<SUFFIX>

Example:

D2WD_MES_ReportGenerator.EVH

D2WD_MES_Sysprof.EVH

D2WD_OD_Sysprof.KOM
D2000_OD_Sysprof.KOM

Third-party processes:

Third-party process	=>	D2000_< APPLICATION >_<ExtProcess>
---------------------	----	------------------------------------

Example:

D2WD_MES_AzurePublisher

D2000_MES_AzurePublisher

Notes:

<APPLICATION> - capital letters, or upper and lower case

<Process> - ideally the same as it is in the D2000 application (SYSPROF, TaskManager, etc.)

<SUFFIX> - capital letters (KOM, ARC, EVH, DBM)
<ExtProcess> - a reasonable name of the external process



Related pages:

[D2000 system utilities](#)