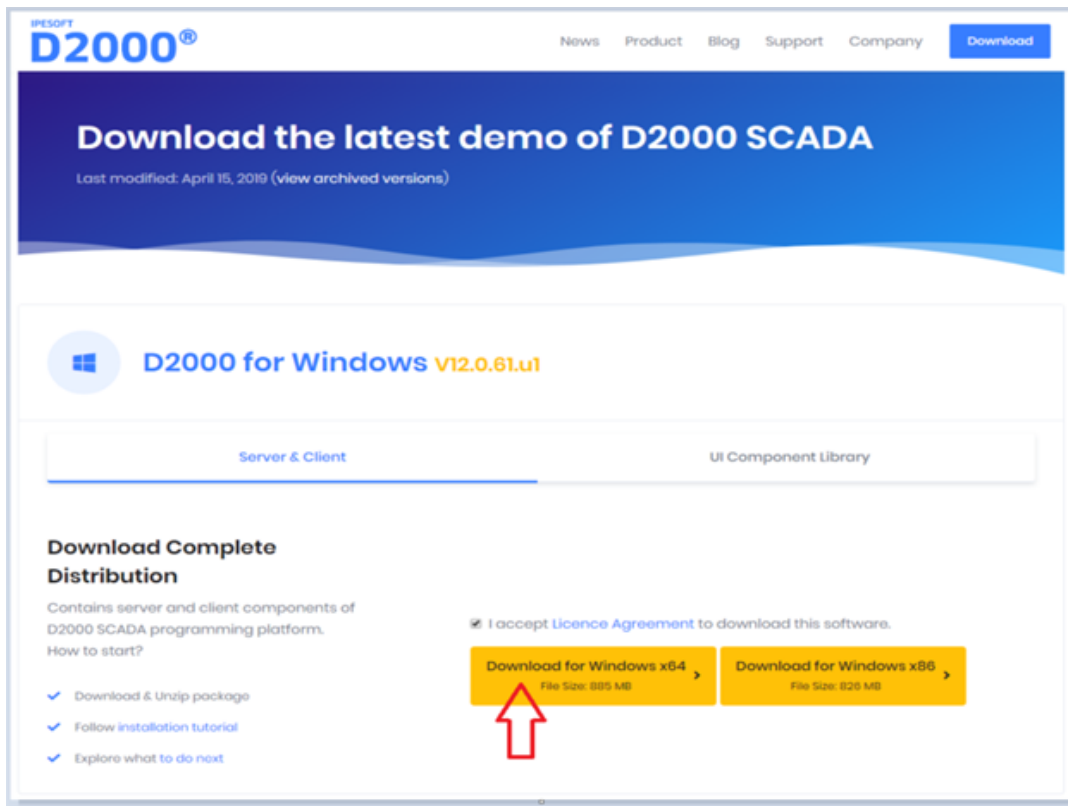


D2000 Installation

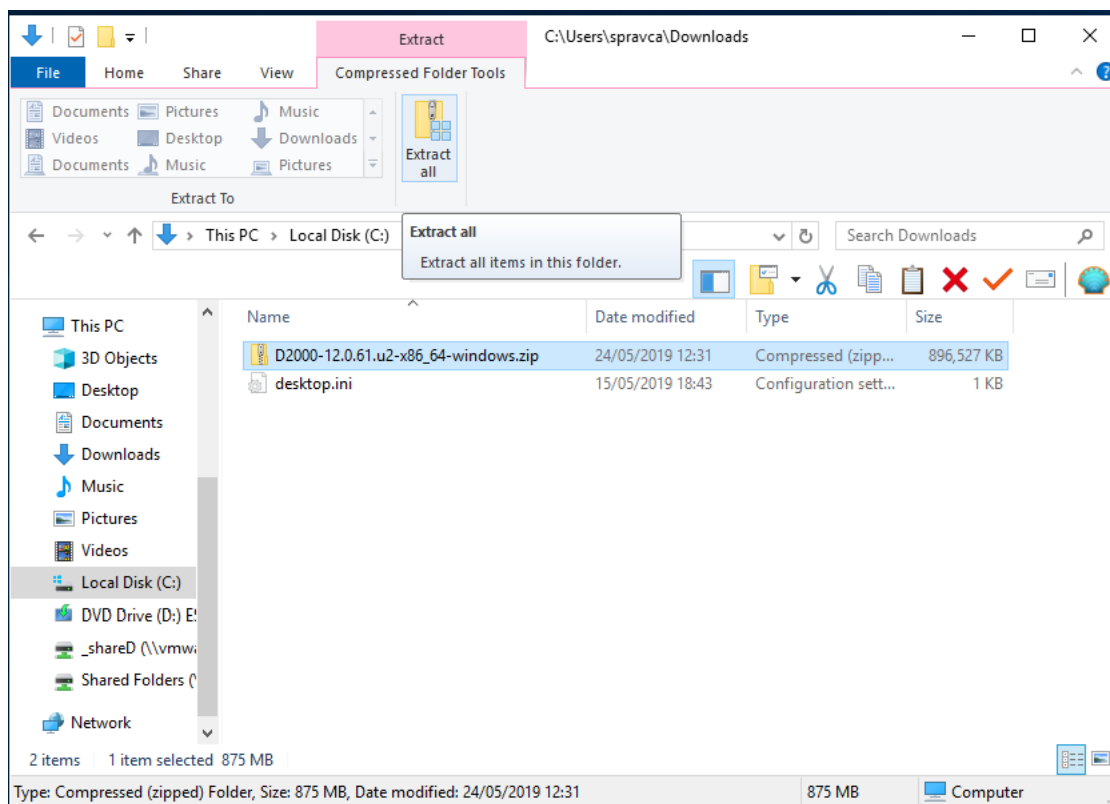
Tip

Before installing D2000, we recommend installing the latest patch of the supported version of PostgreSQL database (<https://www.postgresql.org/download/windows>) as well as PostgreSQL ODBC (<https://www.postgresql.org/ftp/odbc/versions/msi>) to avoid installing PostgreSQL when installing D2000, which may be out of date. The 64-bit version of D2000 requires 64-bit PostgreSQL ODBC.

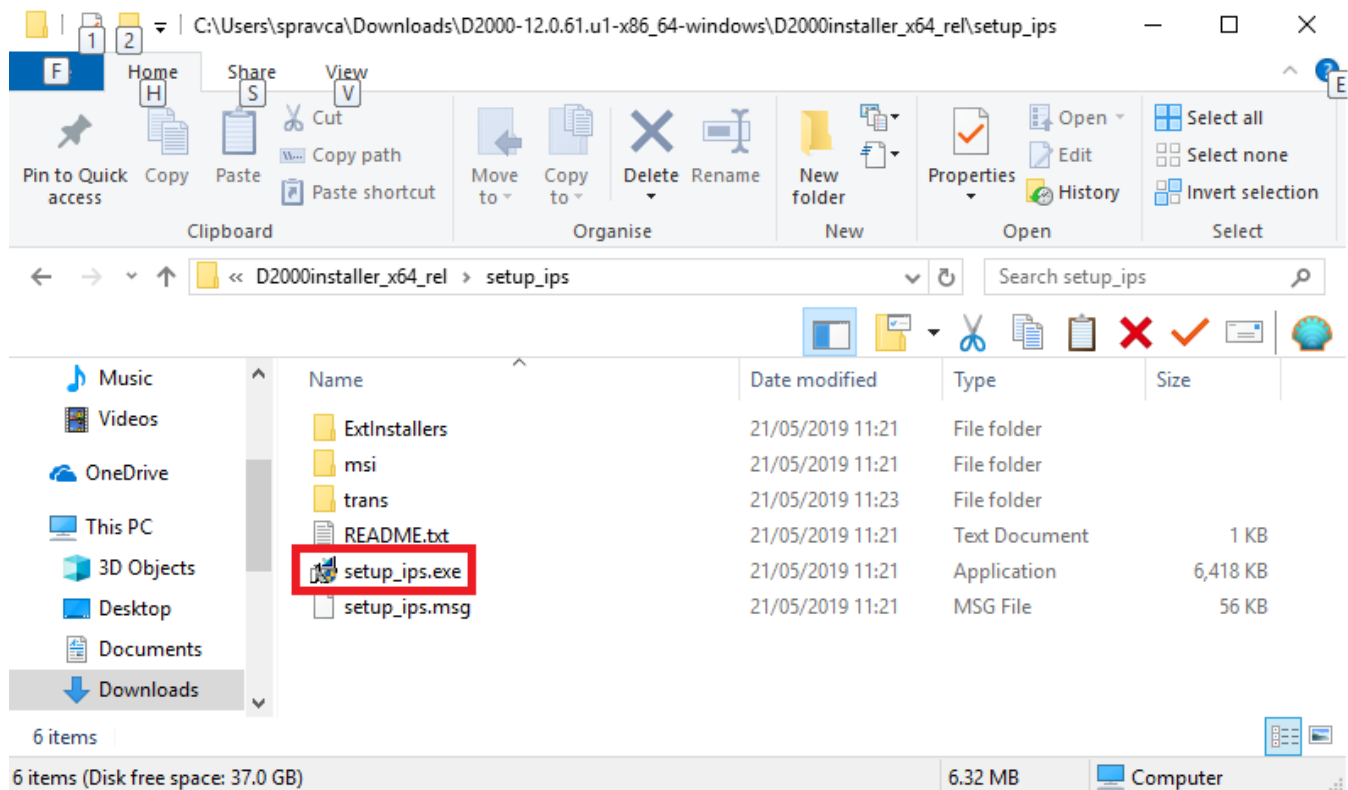
Display the web page <https://d2000.ipesoft.com/download> in the web browser.



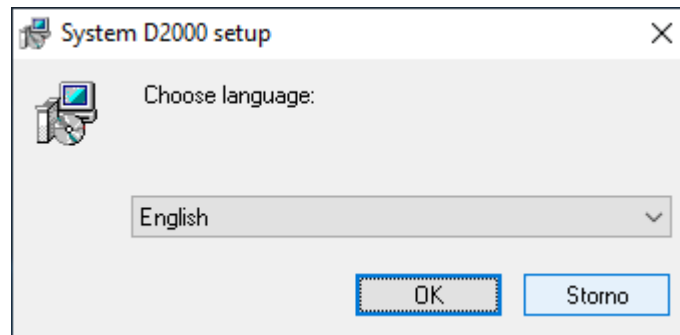
Accept the license agreement and download the 64-bit version of D2000.



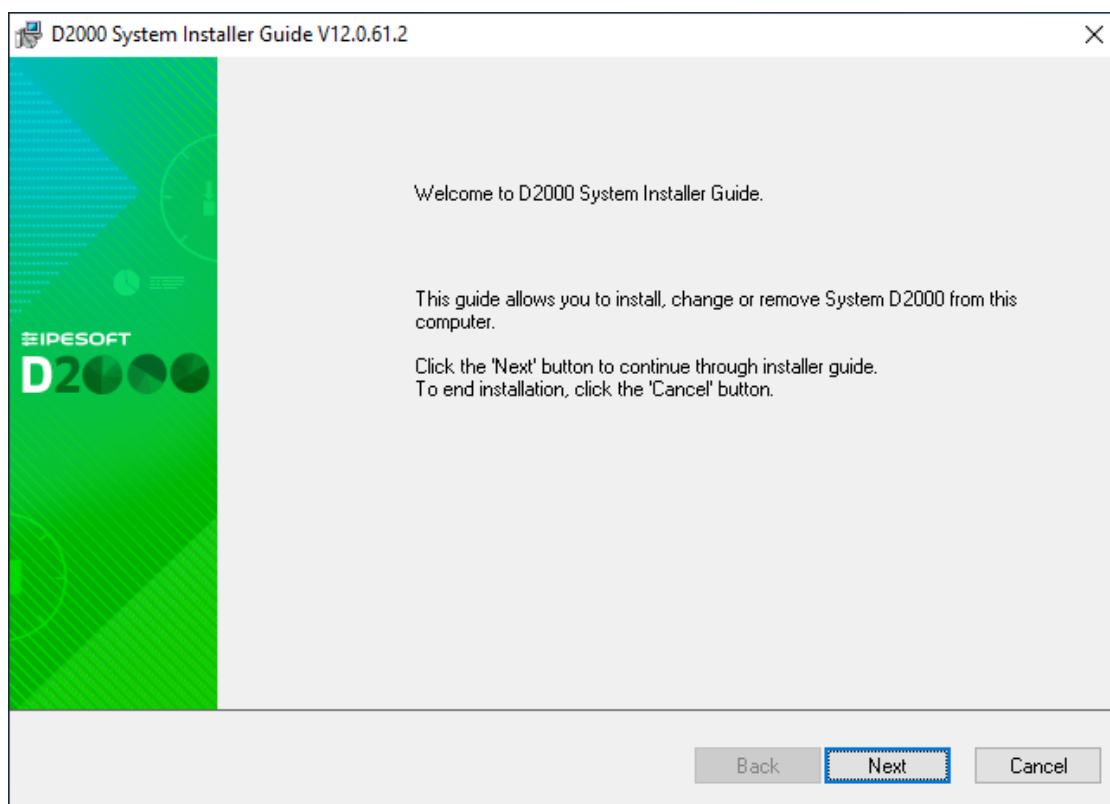
Unpack the downloaded installation package.



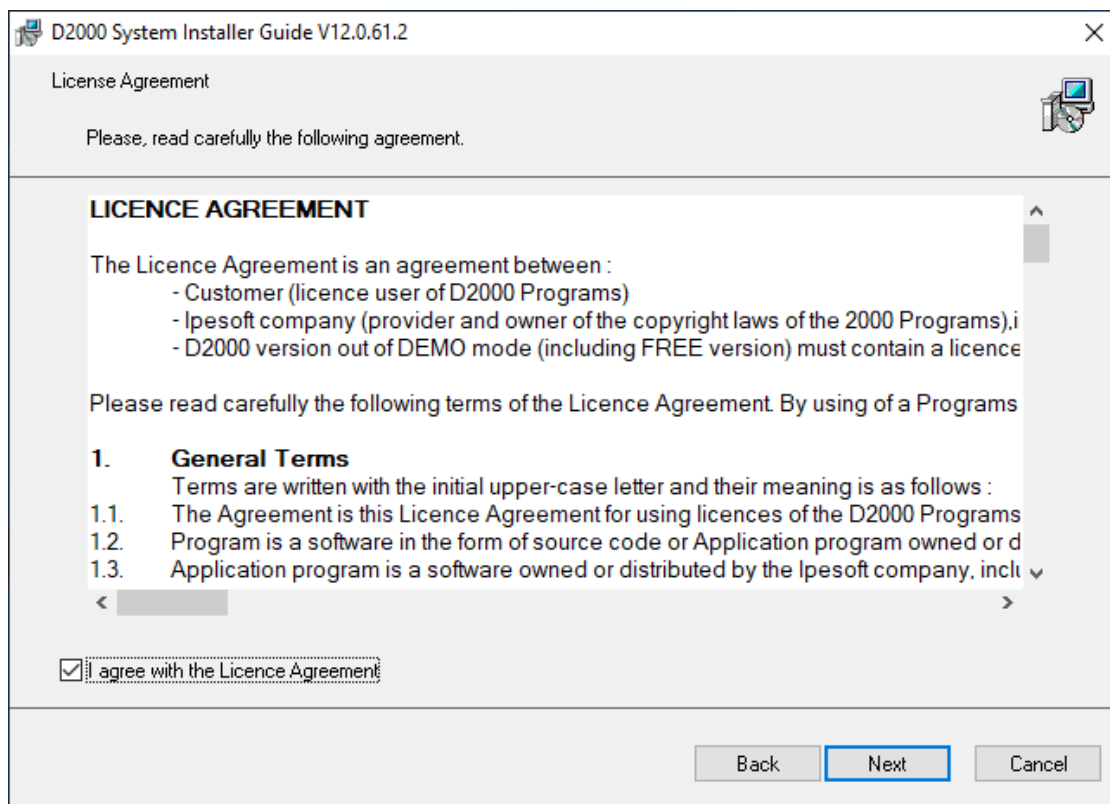
Run the **setup_ips.exe** file to start the installation.



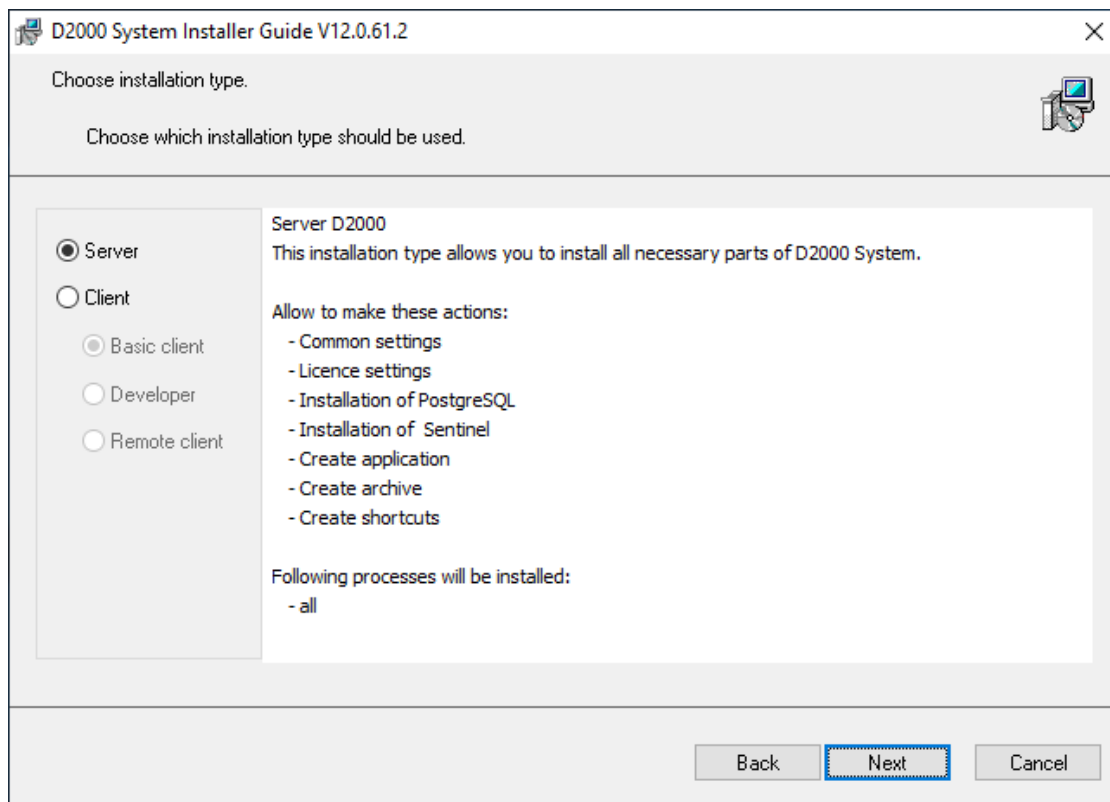
After starting the installation, a dialog box for choosing a language, in which the installation will run, will appear. Choose English.



The initial window of the installer guide will open next. It can be controlled by three buttons which enable us to move forwards and backwards in the dialog or to cancel the installation altogether.

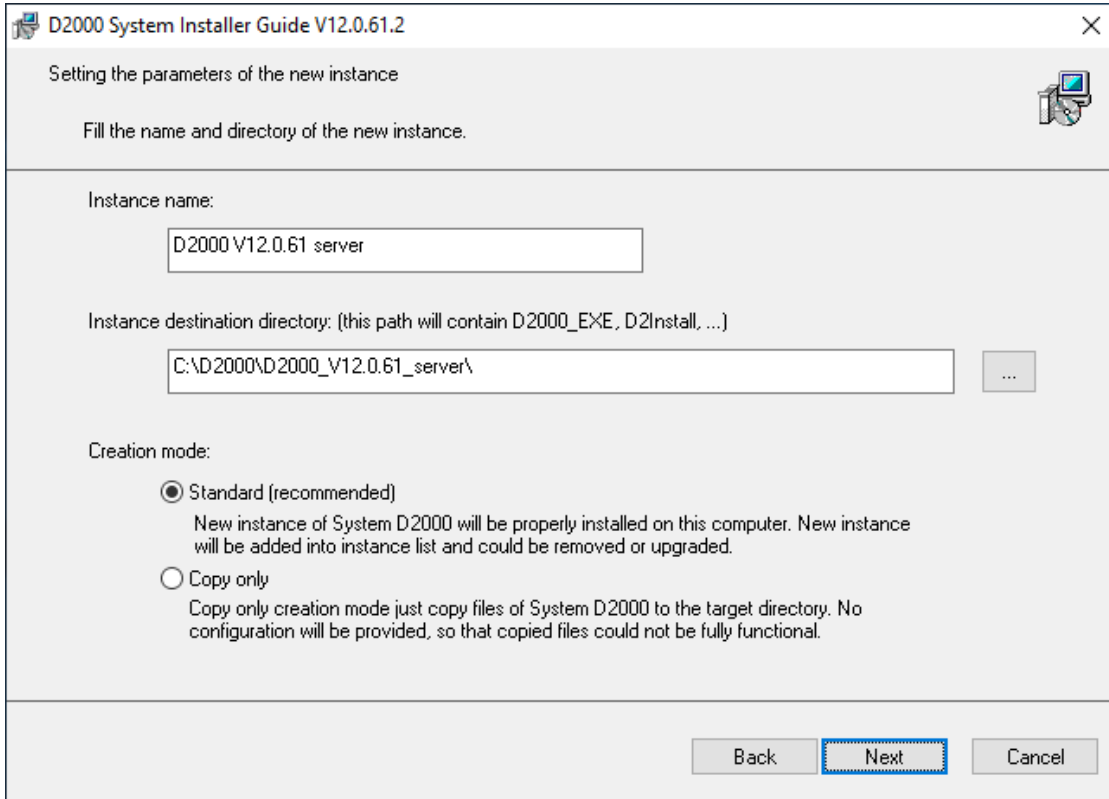


Confirm the license agreement and click the Next button.



Choose the Server type installation and click the Next button.

Warning: If there are one or more instances of the D2000 system on the computer, there will be a window for instance administration preceding this one.

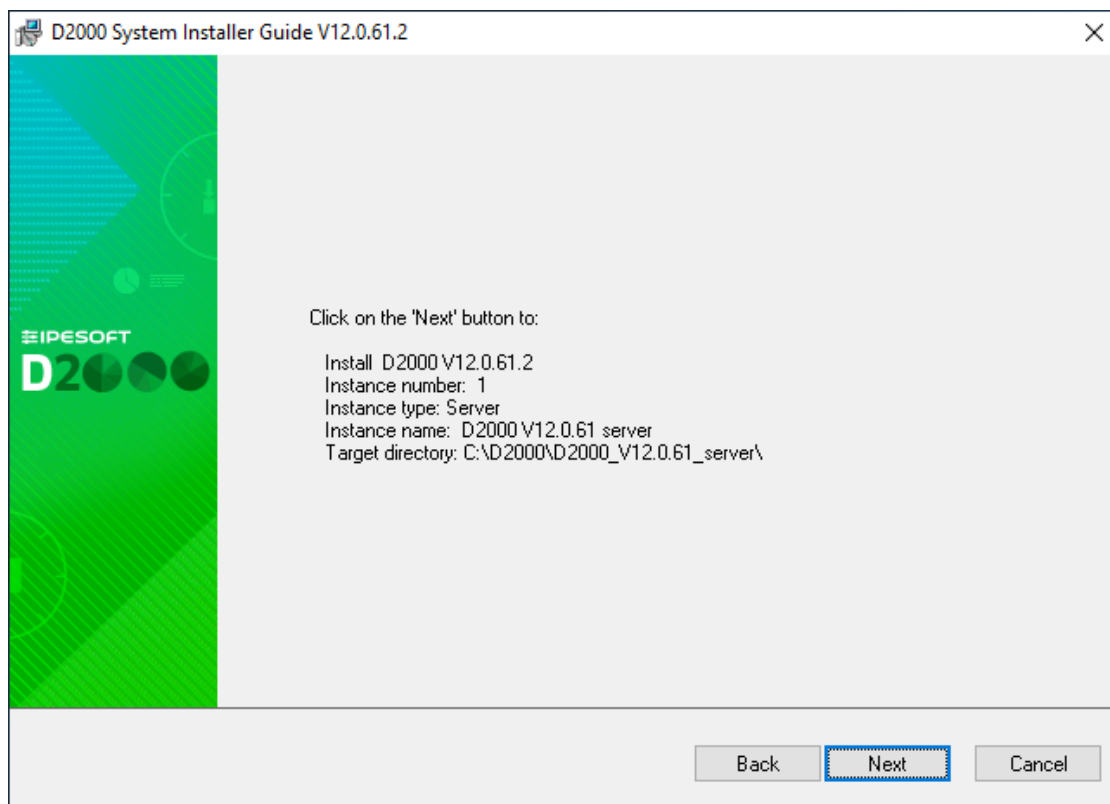


The screenshot shows a window titled "D2000 System Installer Guide V12.0.61.2" with a close button in the top right corner. The main area is titled "Setting the parameters of the new instance" and contains the instruction "Fill the name and directory of the new instance." Below this, there are three sections: "Instance name:" with a text box containing "D2000 V12.0.61 server"; "Instance destination directory: (this path will contain D2000_EXE, D2Install, ...)" with a text box containing "C:\D2000\D2000_V12.0.61_server\" and a browse button "..."; and "Creation mode:" with two radio button options. The first option, "Standard (recommended)", is selected and includes the text "New instance of System D2000 will be properly installed on this computer. New instance will be added into instance list and could be removed or upgraded." The second option, "Copy only", is unselected and includes the text "Copy only creation mode just copy files of System D2000 to the target directory. No configuration will be provided, so that copied files could not be fully functional." At the bottom right, there are three buttons: "Back", "Next" (which is highlighted with a blue border), and "Cancel".

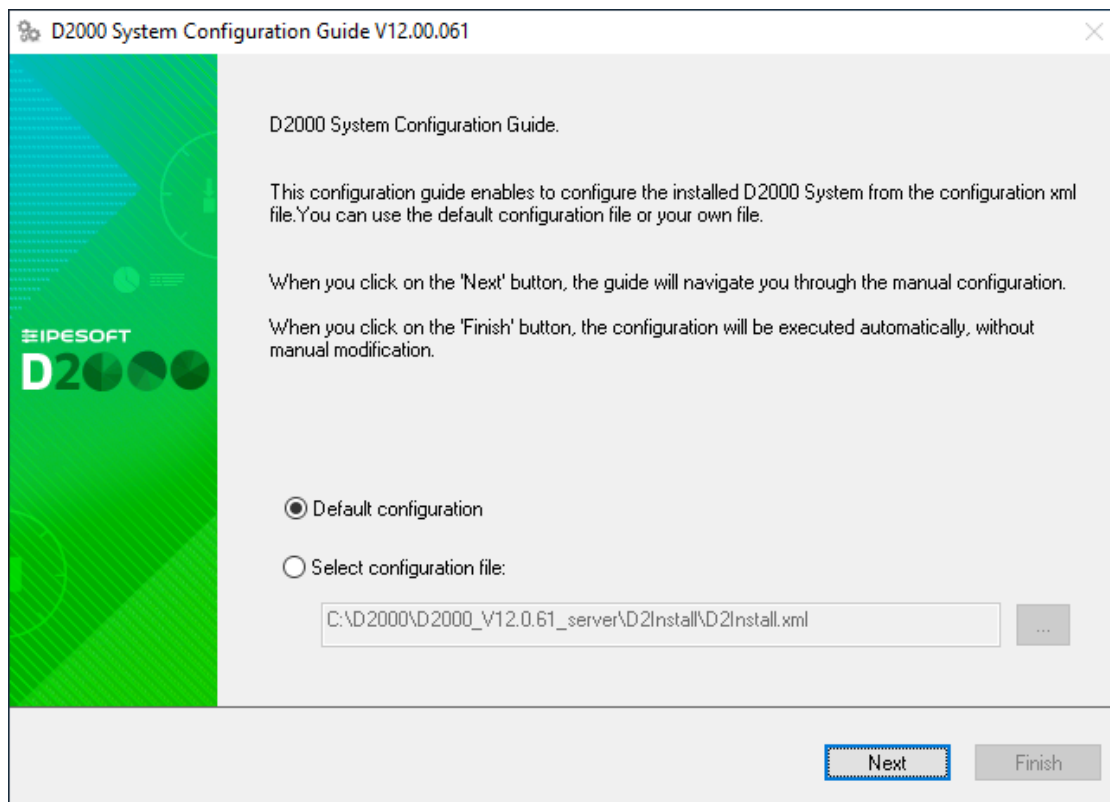
Set the name of the installed instance and the destination directory. Leave the parameter "Creation mode" set as Standard. The given instance name will be used in the *Start menu* after its installation.

 **Tip**

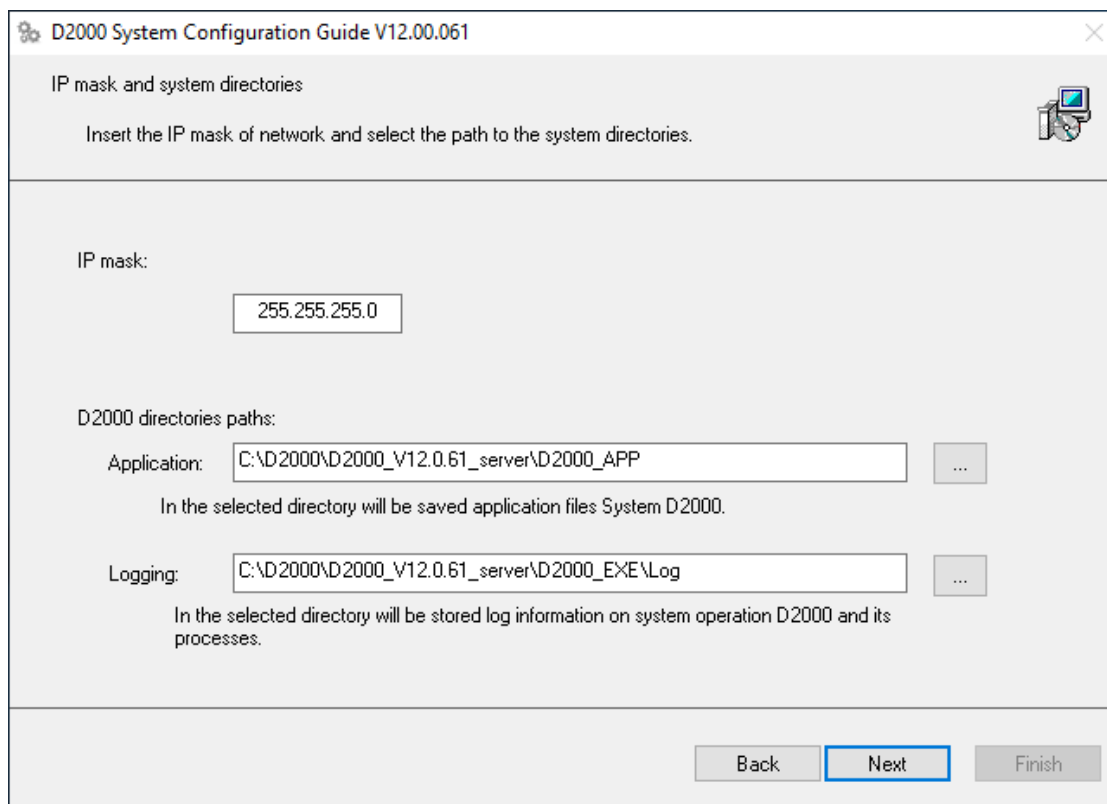
- On a server that is used by only one application, we recommend installing in a directory without a version name (e.g. *d:\D2000\D2000_EXE*) so that after upgrading to a newer version, the directory name will not match the installed version.
- On a server that is used by several applications (e.g. an archive server or an application server on which another application has a [D2000 Gateway](#)), we recommend installing in a directory with the name of the application (e.g. *d:\D2000\MY_MES* or *d:\D2000\MY_SCADA*), so that after upgrading to a newer version, the name of the directory will not match the installed version.
- On a workstation used to work with various applications, we recommend installing to a directory named by the version (default). In this way, multiple versions can be installed and used in parallel, while new versions must be installed during application upgrades. Versions no longer used can be uninstalled in the standard way.



A display of summarizing information about the entered parameters is shown. After confirmation, the installation process will run and it could take some time.



Use the "Default configuration".



The screenshot shows a configuration window titled "D2000 System Configuration Guide V12.00.061". The main heading is "IP mask and system directories". Below this, a instruction reads: "Insert the IP mask of network and select the path to the system directories." There is a small icon of a computer and network cables on the right. The configuration area contains three fields: "IP mask:" with the value "255.255.255.0"; "D2000 directories paths:" with "Application:" set to "C:\D2000\D2000_V12.0.61_server\D2000_APP" and "Logging:" set to "C:\D2000\D2000_V12.0.61_server\D2000_EXE\Log". Both directory fields have ellipsis buttons to the right. Explanatory text follows each field: "In the selected directory will be saved application files System D2000." and "In the selected directory will be stored log information on system operation D2000 and its processes." At the bottom right are three buttons: "Back", "Next" (which is highlighted with a blue border), and "Finish".

D2000 System Configuration Guide V12.00.061

IP mask and system directories

Insert the IP mask of network and select the path to the system directories.

IP mask:

255.255.255.0

D2000 directories paths:

Application: C:\D2000\D2000_V12.0.61_server\D2000_APP ...

In the selected directory will be saved application files System D2000.

Logging: C:\D2000\D2000_V12.0.61_server\D2000_EXE\Log ...

In the selected directory will be stored log information on system operation D2000 and its processes.

Back Next Finish

If needed, change the following parameters (in most cases, they are pre-set correctly)

- IP mask – the Subnet Mask parameter
- Application – the directory for saving configuration of created applications
- Logging – the directory for storing log files

D2000 System Configuration Guide V12.00.061

The support programs for D2000 Server

Choose which support programs you want to install and enter the licence file.

☒ Install the PostgreSQL
Installs the PostgreSQL database management system.

☐ Install the support for HW keys
Install the Sentinel Protection Installer essential for the proper functioning of hardware keys.

☐ Use the hardware key
☒ Use the software key

Back Next Finish

It is necessary to install the PostgreSQL database which is used for storing the configuration of applications. In the case of the Demo version, the support for HW keys, and the choice of the hardware key/software key is not essential.

D2000 System Configuration Guide V12.00.061

Creating the shortcuts for D2000 System clients

Select the client, for which the shortcut should be created and their location.

Shortcut location:

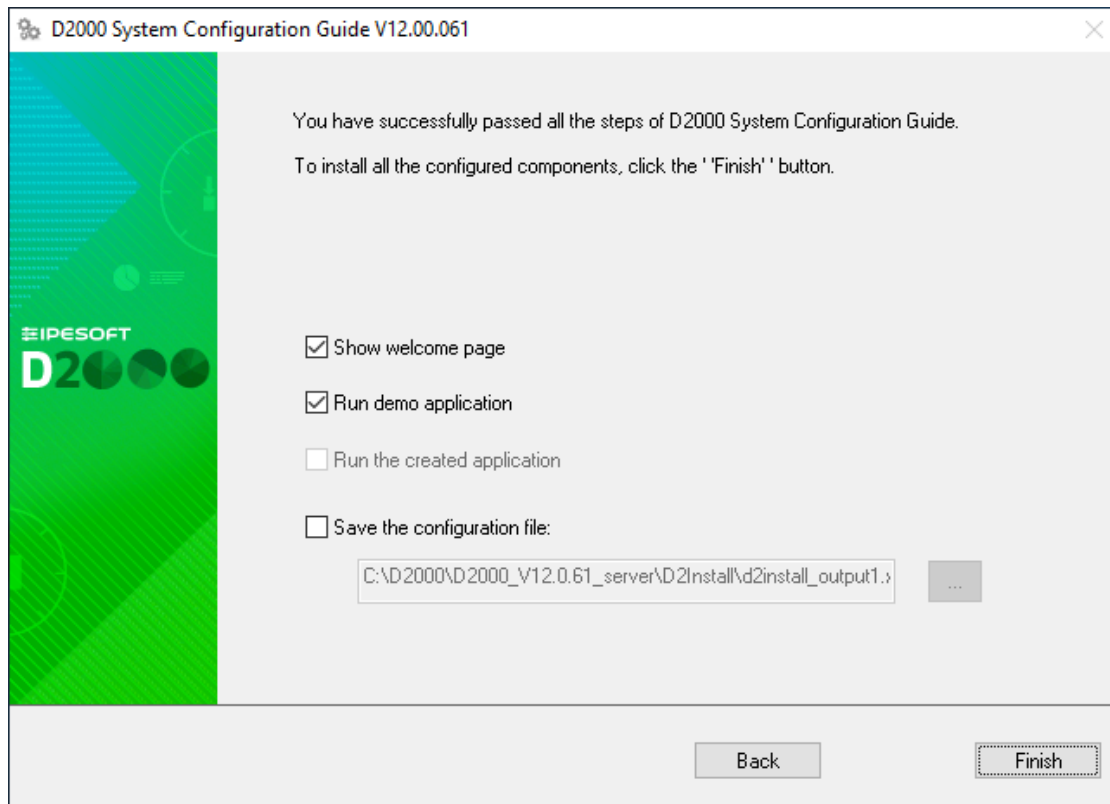
☒ Desktop
☒ Start menu
☒ For all users

To set the shortcut parameters, double-click on the particular client name.

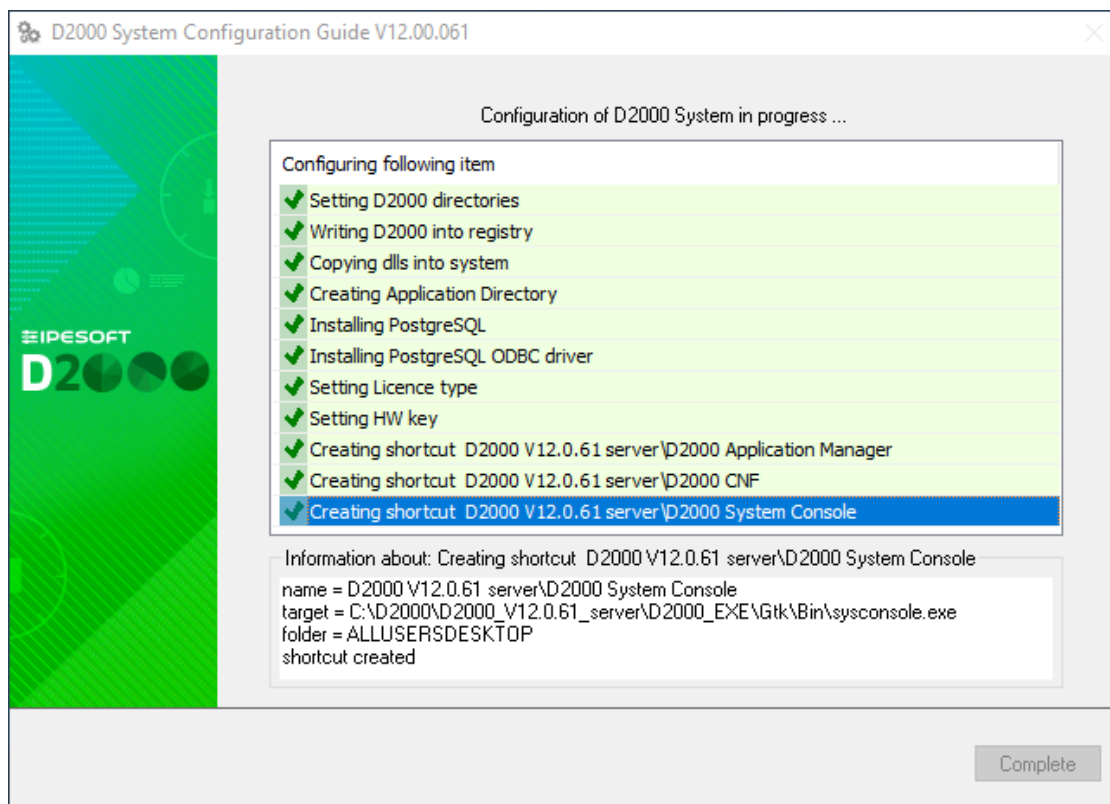
Add shortcut	Client	Parameters
<input checked="" type="checkbox"/>	D2000 Application manager	
<input checked="" type="checkbox"/>	D2000 CNF	
<input checked="" type="checkbox"/>	D2000 System Console	
<input checked="" type="checkbox"/>	D2000 HI	
<input checked="" type="checkbox"/>	D2000 GREDIT	
<input checked="" type="checkbox"/>	D2000 Reference documentation	
<input checked="" type="checkbox"/>	D2000 HI documentation	
<input checked="" type="checkbox"/>	Run DEMO_Basic1	--CREATEANDRUNAPP=DEMO_Basic1

Back Next Finish

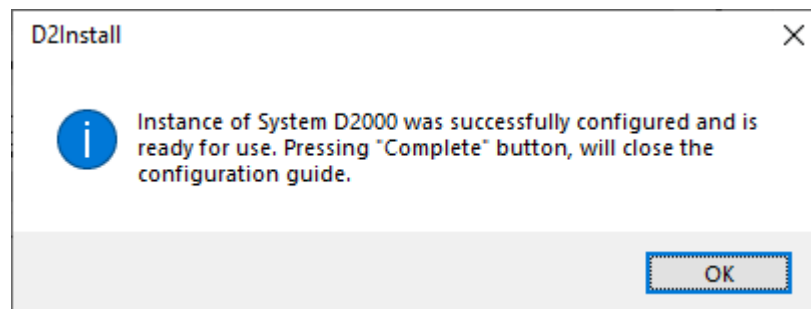
Dialog box shows the settings for the creation of the shortcuts for individual components. In most cases, the default setting is correct.



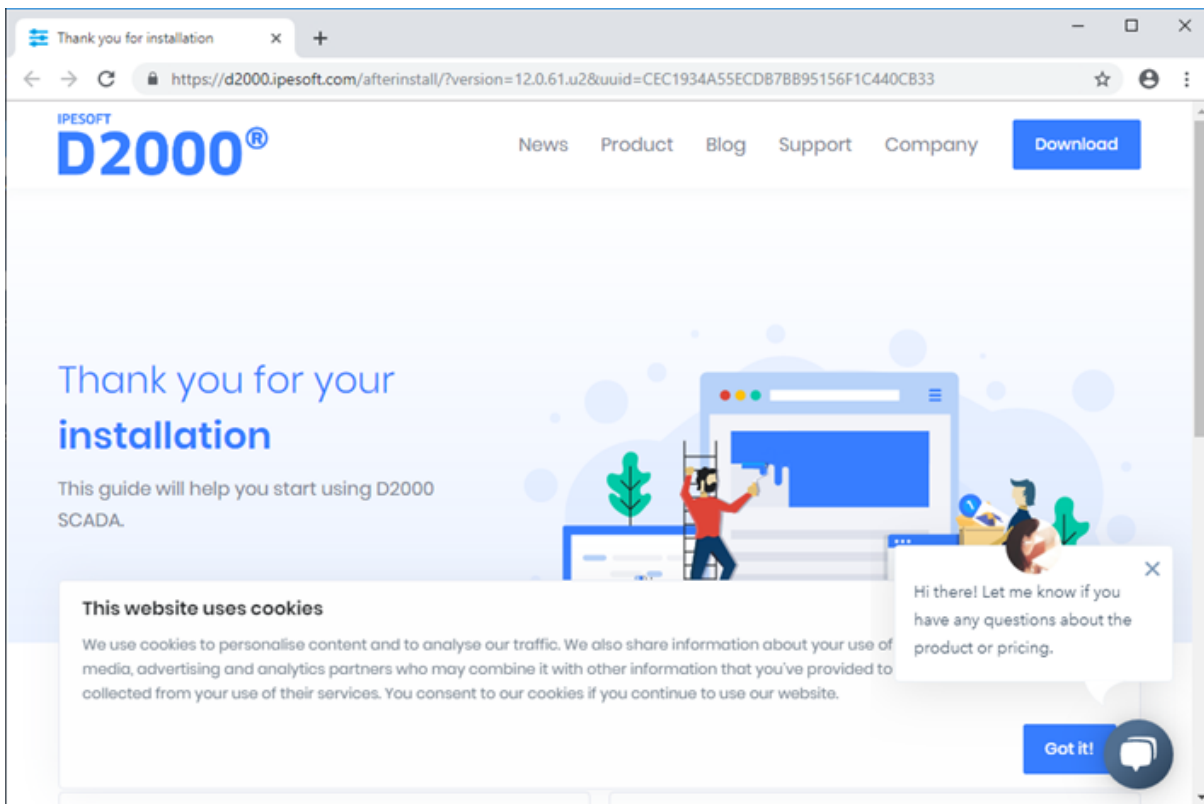
The choice “Run demo application” enables the creating and running of the demo application after the end of the installation. It is possible to save the set parameters of the installation. The last installation phase will run after clicking the button “Finish”.



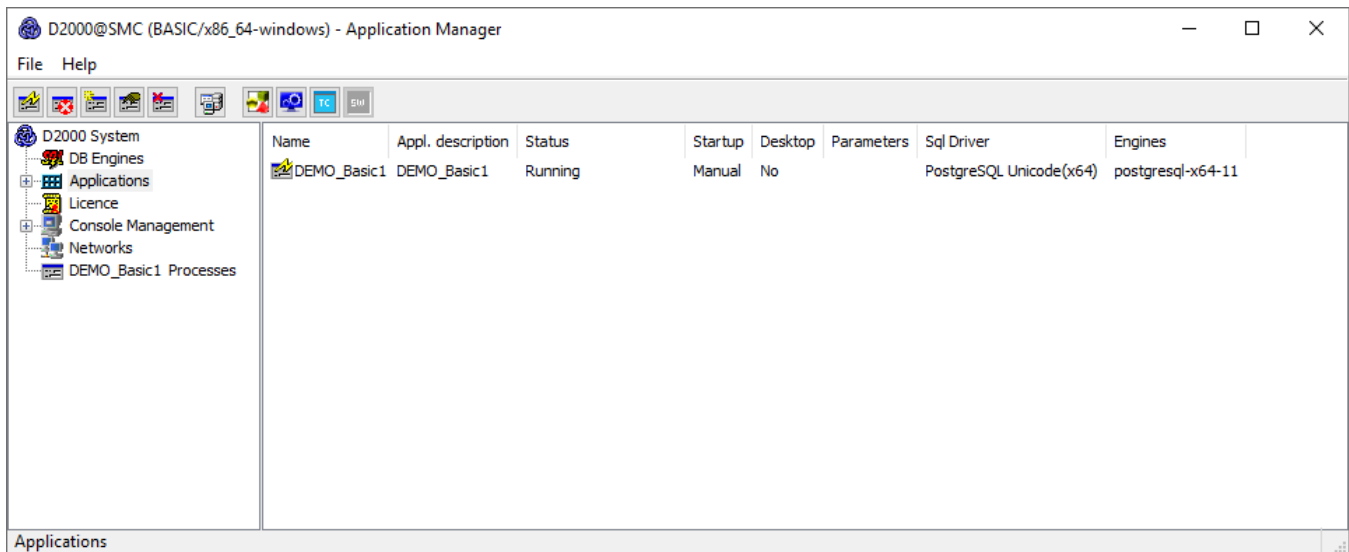
The box informs about the current running configuration process. Information about the success or failure of this process is shown as well.



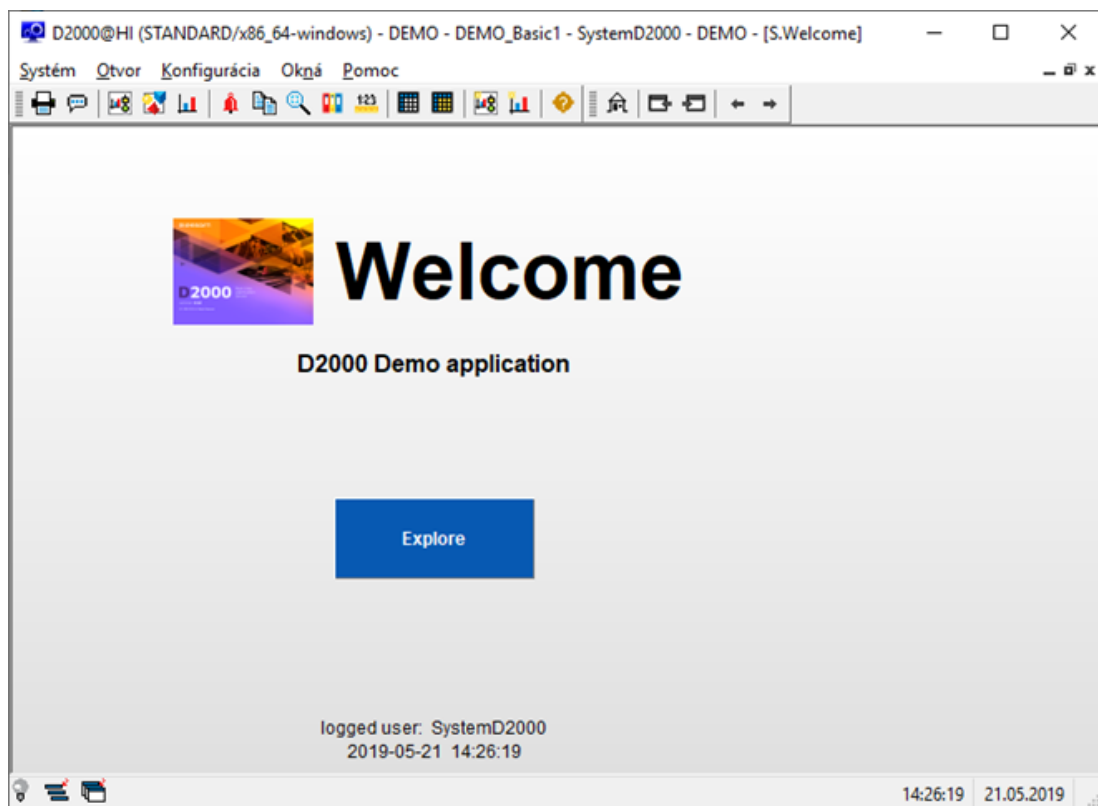
Now the instance of the D2000 system is installed, configured and ready to be used. After clicking the "OK" button, the "Complete" button will be available, shown on the previous slide. By clicking the button, the installation will be completed and the DEMO_Basic1 application will be created.



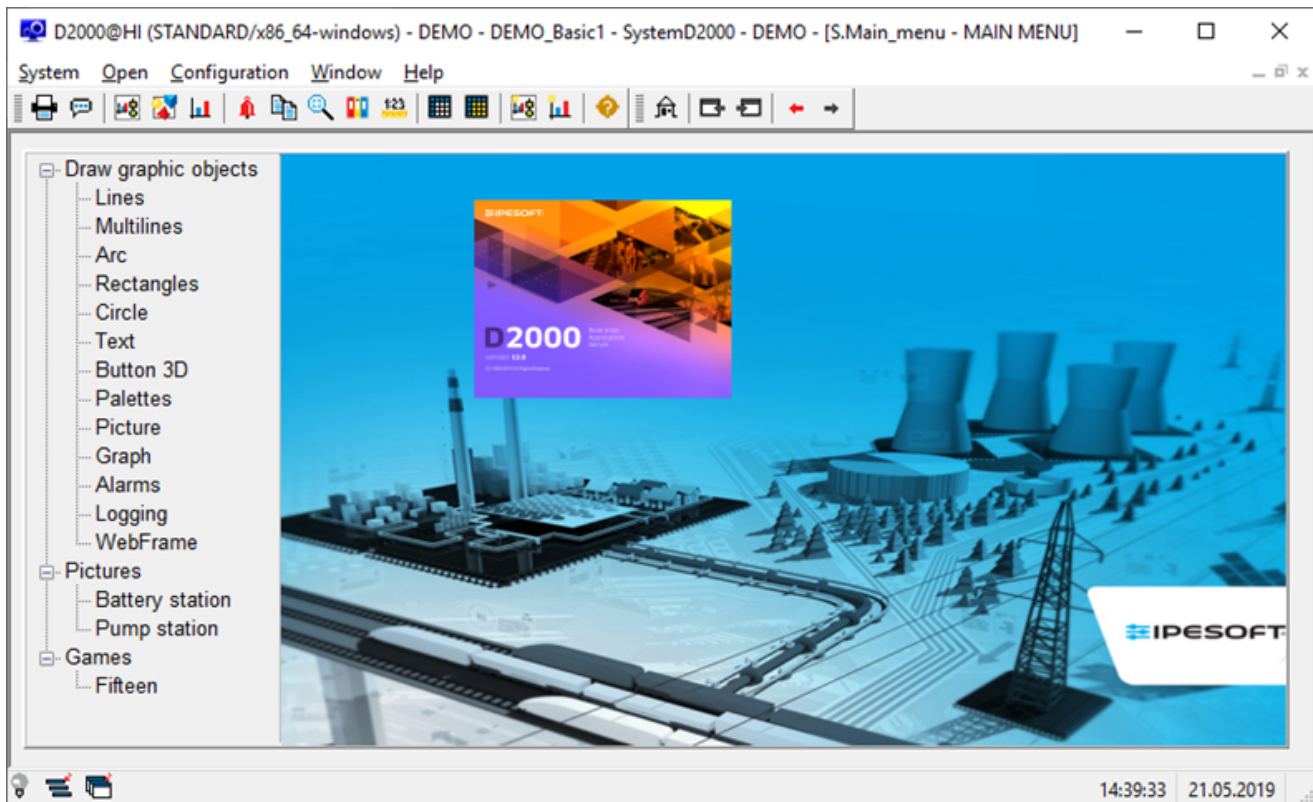
An Internet page “after install” will appear and at the same time, the DEMO_Basic1 application will start running.



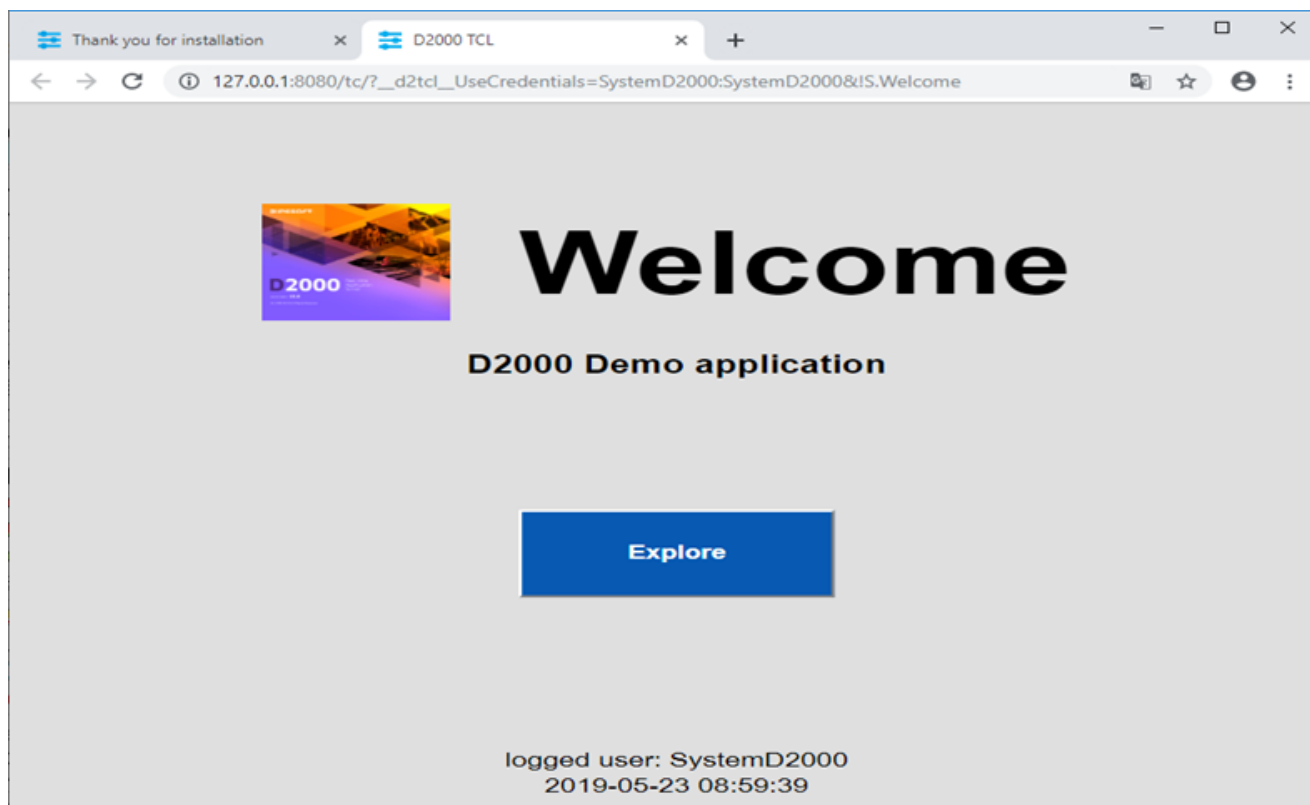
The Application Manager presents the course of creating the DEMO_Basic1 application and its start. After starting the application, two client processes – HI and GR with the logged-in user SystemD2000 (password: SystemD2000) – will start automatically.



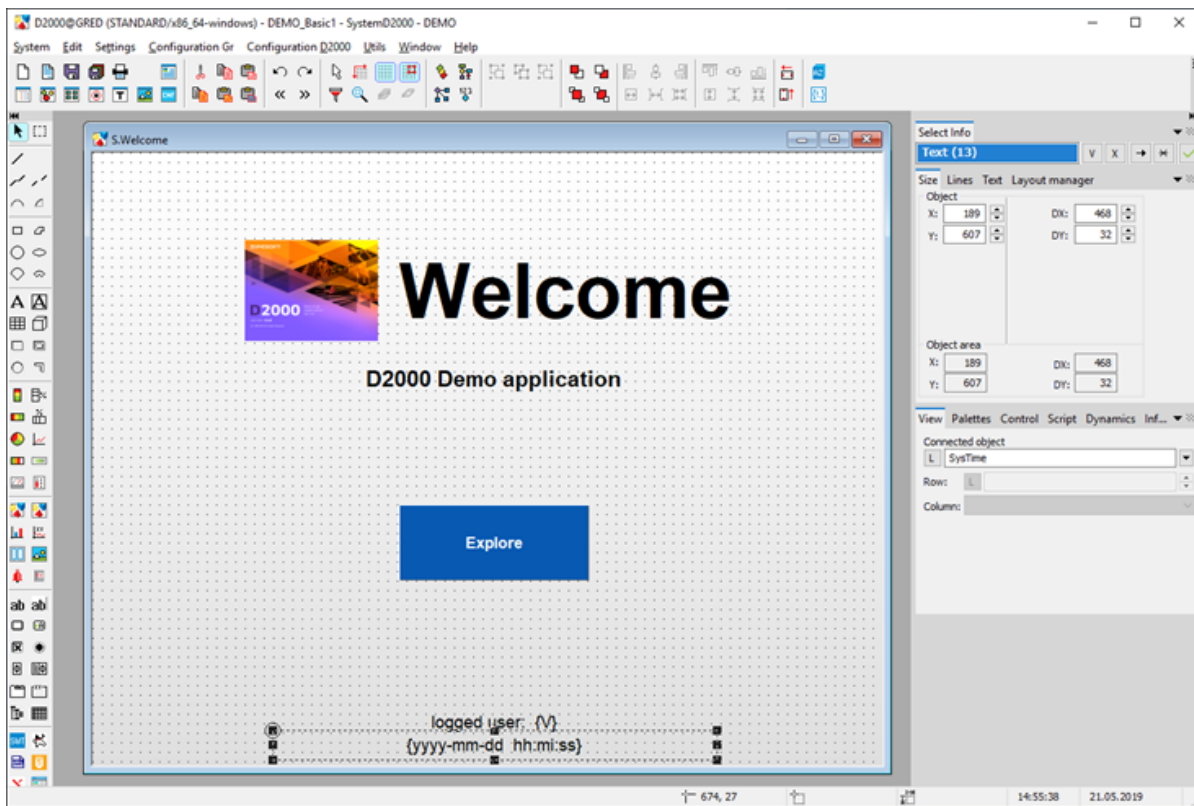
Human Interface – D2000 HI will open with the starting scheme S.Welcome. By clicking on the "Explore" button, the main summarizing scheme of the DEMO application will open.



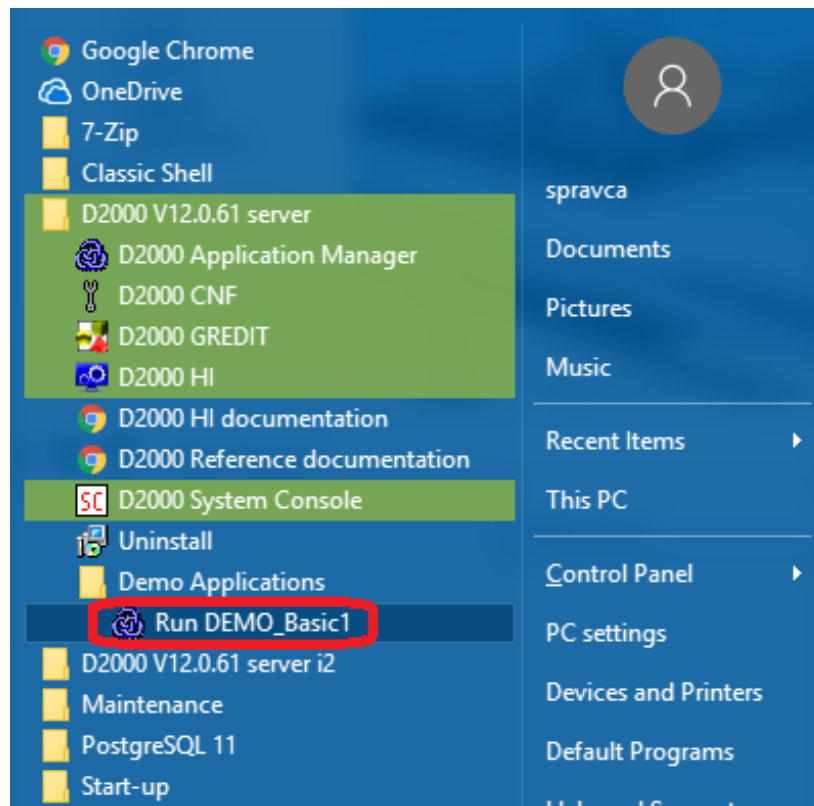
There are demonstrations and the usage of the basic types of graphic objects displayed in the DEMO application. In the section "Pictures", there are two examples of practical usage of the graphic objects – there is a demonstration scheme that overwatches the process of charging and discharging a battery and technological scheme of a gas station is shown.



On the other tab of the web browser, there will be a welcoming scheme S.Welcome displayed in the thin client environment. It is the same scheme S. Welcome as is displayed in the D2000 HI window. The description of its functionality and usage is, therefore, the same.

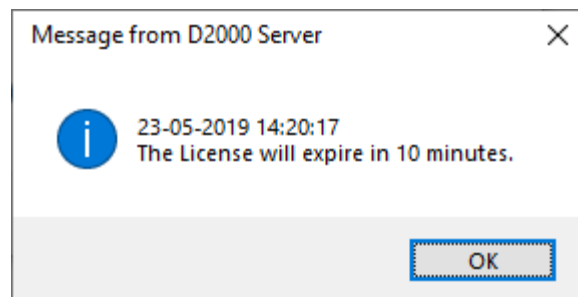


Graphic editor – GR serves for creating visualization and completes the configuration of the application. Currently, it offers configuration of the initial scheme from the previous slide (S.Welcome). If it is changed and saved, the result will be visible in HI (if it is not visible in HI, there is a need to logout and login again).

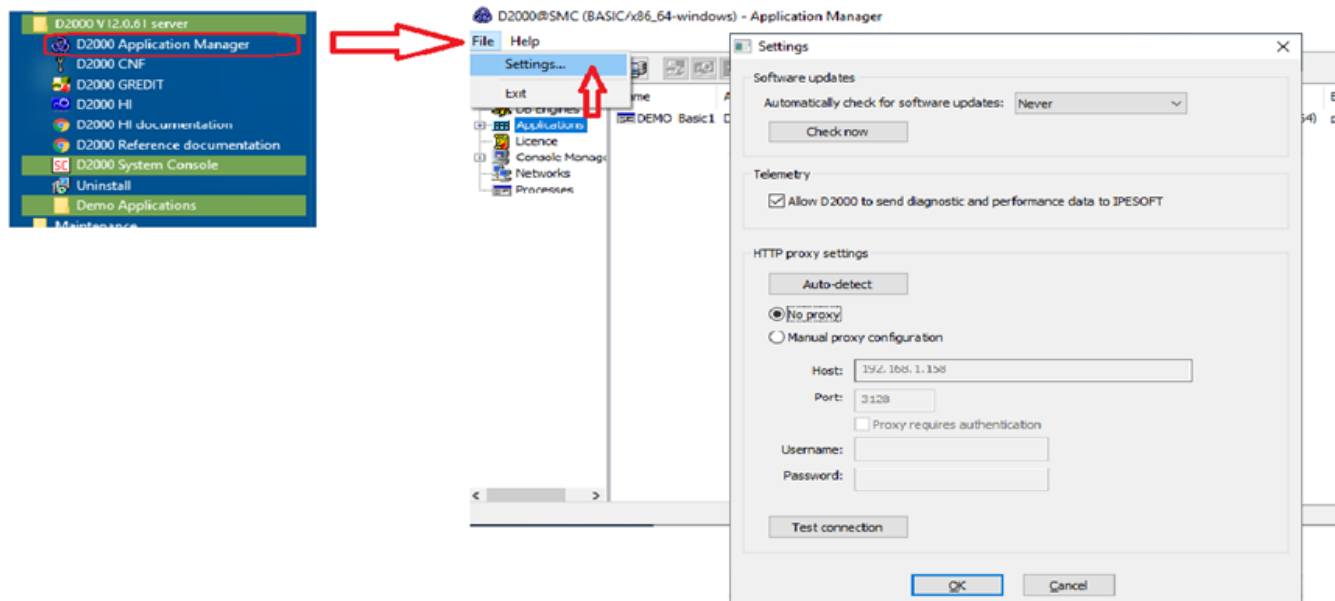


The DEMO_Basic1 application can be started individually by clicking on the link "Run DEMO_Basic1".

After the applications start, also the processes D2000 HI and D2000 GR will run automatically and in the web browser, the thin client with the scheme S. Welcome will appear.



Without a paid license, the application in the DEMO mode will be automatically shut down after an hour. Before that, a system message about the time limitation of the license validity appears. The license will be automatically renewed if parameters of the Internet connection are set correctly and are enabled to send the diagnostic data to the central Ipesoft server if done accordingly to the following slide.



By choosing File/Settings in the Application manager, the Settings window is opened. The correct parameter values of our internet connection can be configured here. The "Auto-detect" button sets everything automatically. If the proxy server is used, the correct parameters of the proxy server must be entered. The correctness of parameters is tested by clicking the "Test connection" button.

Advanced tip

Ipesoft D2000 can also be installed manually. For example when migrating from server to server, just copy the installation directory (e.g. D:\D2000) and the registers of the Computer\HKEY_LOCAL_MACHINE\SOFTWARE\Ipesoft branch.

If it is necessary to move the directory of the installation directory, it is necessary to make changes in the registry (*Log_Dir*, *Perf_Dir*, *InstallDir* items) in the relevant branch of the installation (more information - see [Multiple Installations on One Computer](#)). Warning - if the directory with applications is moved (e.g. D:\D2000\D2000_APP), it is not enough to edit the AppDir entry in the registry, but:

- When using the PostgreSQL database server, it is necessary to migrate the PostgreSQL databases (configuration, logging, archive) to the new application directory.
- When using the Sybase SQL Anywhere database server, it is necessary to modify the database ODBCs (configuration, logging, archive) so that they contain the path to the new application directory.