

Processing of generated files (Users)

User - processing of generated files

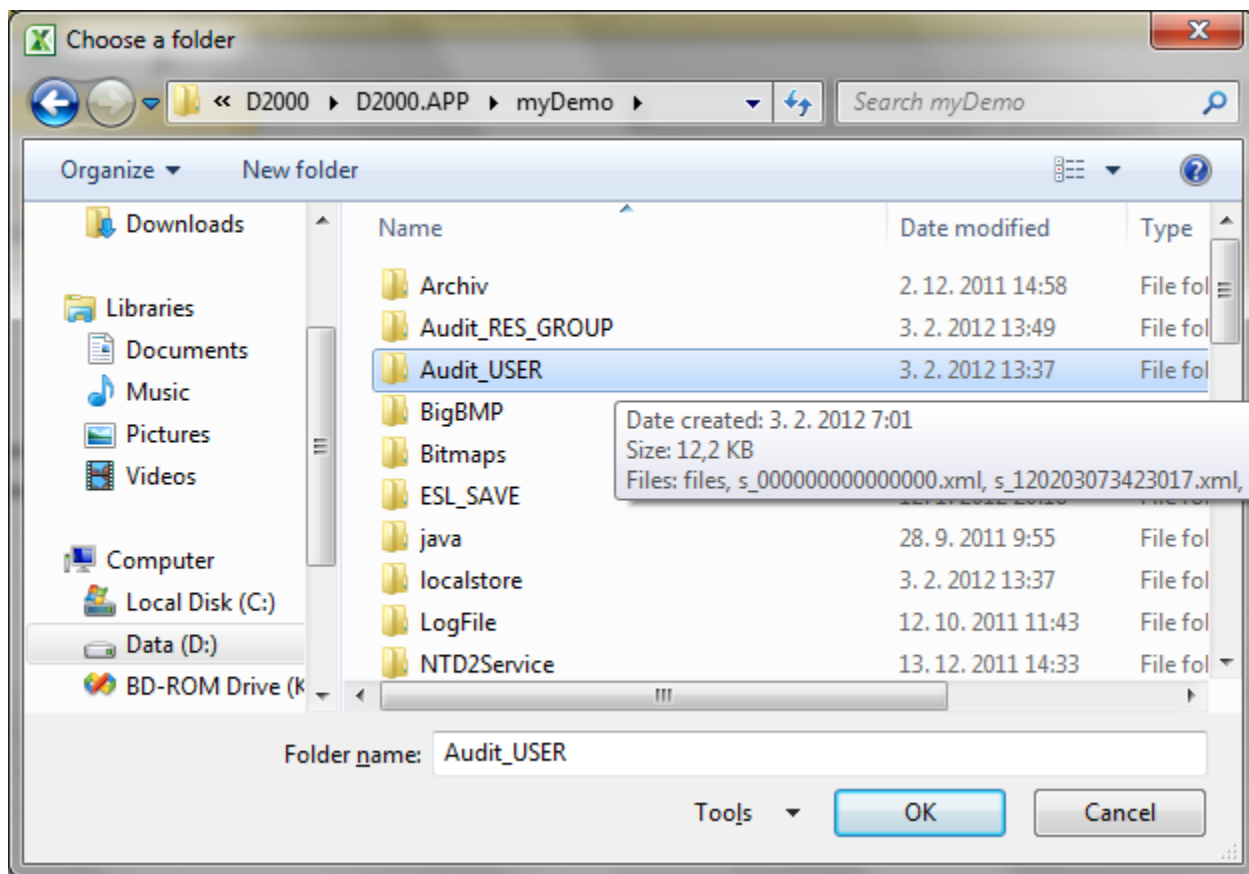
The automatically generated files are processed in **MS Excel** with the help of **UserObj_Report.xls**, which is placed in [the installation directory](#), subdirectory **Utils**.

After opening the file **UserObj_Report.xls**, the first sheet is actually a form to generate a report.

Naposledy zvolená cesta:	D:\D2000\D2000_APP\UNI\Audit	Generuj report
Dátum od:	3.7.2012	
Dátum do:	10.7.2012	

The options **Date from** and **Date to** define the period, from which the changes will be transferred to the report. If **Date from** is not defined, all changes up to **Date to** will be transferred. If neither **Date from** nor **Date to** are not defined, all changes will be transferred. This filter does not relate to the original object configuration.

After clicking the button **Generate report**, dialog box opens to choose the directory that contains the generated XML files. Select a particular directory and click on OK button.



Then all XML files are loaded automatically into the second sheet (Data).

Parameters (columns) in table

The table is divided into two parts – [operations](#) and [configuration parameters](#) (the header of columns has different colors).

	G	H	I	J	K	L	M	
1	Počet chybných zadání hesla	Zablokovaný do	Proces	Počítač	Meno	Plné meno	Administrátor	Prihl
2	0		ws1tmat1	ws1tmat1	s	s	TRUE	
3								

The meaning of the columns:

Operations

Column in report	Meaning
ID	HOBJ of the user in the D2000 System.
Name	User name in the D2000 System.
Log time	Timestamp of the operation.
Operation	Type of operation.
Success of operation	Flag of success of executed operation.
Comment	A comment (additional information).
Number of incorrect password entries	Number of incorrect password entries.
Blocked till	Time until the account is blocked.
Process	Name of the process (D2000 object) that executed the operation.
Workstation	Name of workstation from which the operation was done.

Type of operations

Type	Export of configuration	Description
CHANGE_MACROS	yes	Change of user macros in the D2000 HI.
CHANGE_PASSWORD	yes	Change of user password in the D2000 HI.
CHANGE_USER_SETTINGS	yes	Change of user settings in the D2000 HI.
CONFIGURE_NEW_USER	yes	Create a new user in the D2000 CNF.
CONFIGURE_SAVE_USER	yes	Change of user configuration in the D2000 CNF.
CONFIGURE_SAVE_USER_PWD	yes	Change of user configuration and password in the D2000 CNF.
CONFIGURE_DELETE_USER	yes	Deleting of user.
XML_IMPORT_NEW_USER	yes	Create a new user by XML Import.
XML_IMPORT_SAVE_USER	yes	Change of user configuration by XML Import.
XML_IMPORT_SAVE_USER_PWD	yes	Change of user configuration and password by XML Import.
LOGON_USER_LOGON ¹⁾	no ²⁾	User logon.
LOGON_USER_LOGOFF ¹⁾	no	User logoff.
INITIALIZATION_FILE	yes	The initial configuration – file <i>UserName_0000000000000000.xml</i> .

¹⁾ As regards the LOGON_USER_LOGON and LOGON_USER_LOGOFF the user name in the header corresponds to the object name in the configuration. The other operation has different name for a user who done the operation (header) and a user whose configuration was changed (configuration).

²⁾ If user logs on after password expiration but he is still in the limit of permitted logons, also the user configuration is changed, i.e. whole configuration is exported.

Configuration parameters

They are derived from the [configuration parameters](#) of object *User*.

The meaning of columns in the table (they come after the columns about operations):

Column in table [value]	Configuration parameter in D2000
-------------------------	----------------------------------

Name	Name of the D2000 object
Full name	Full name
Administrator [TRUE/FALSE]	Administrator
Logon disabled [TRUE/FALSE]	Disable logon
Limited to	Limited to... .
Time out	Time out [min].
Enable empty password	Enable empty password.
Max. time of validity	Max. time of validity [days]
Password expires	Password expires on
Change password [TRUE/FALSE]	Change password at login
Menu	Menu
Delimit ext. references [TRUE/FALSE]	Use delimits external references
Configure the objects "User" [TRUE/FALSE]	Allow to configure objects of User type
Composition	Composition
Macros [values separated by comma]	Macros
Enabled activities [values separated by comma]	Actions enabled in HI
Authentication methods [values separated by comma]	Authentication methods
Group of objects [values separated by comma]	Assigned groups of objects



Related pages:

[User - monitoring changes in configuration](#)
[User - setting of full monitoring](#)