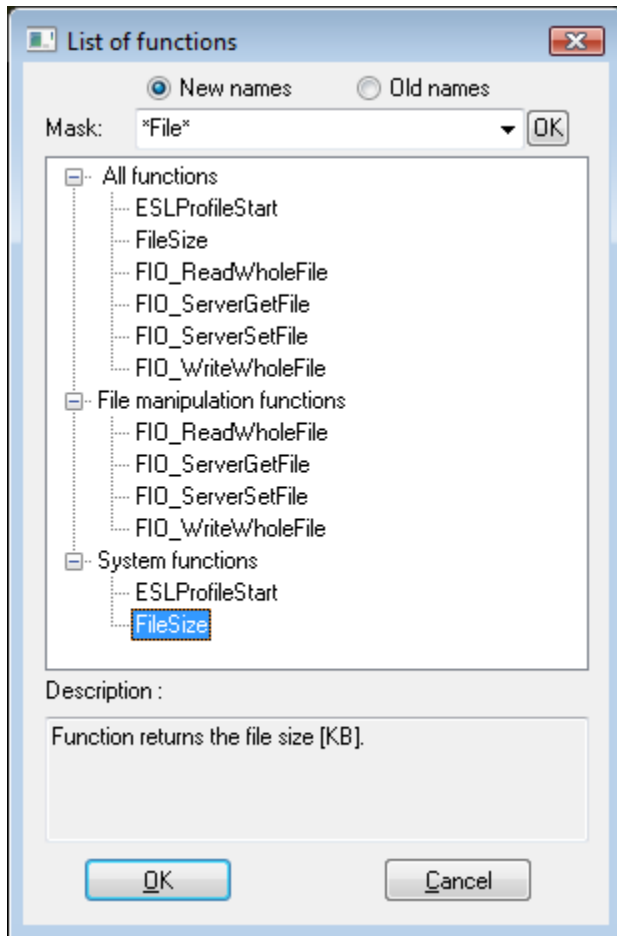


# Selection of a function



Clicking the button **Functions** opens the following dialog box allowing to select a function:



## New names / Old names

Shows new / old names of functions in the list.

## Mask

Mask allows more quick searching for the functions, names of which have some common characters. You can use [special characters](#). After filtering according to mask only the groups which are not empty will display and the list of all functions is placed as the first.

## Description

Brief description of selected functions. The list of existing functions is described in a [separate document](#).

Selected function is to be inserted on the current cursor position after clicking the button **OK**.



### Related pages:

[Script editor](#)  
[Script editor - toolbar](#)