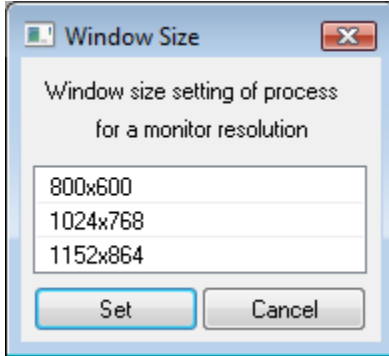


Setting a size of active window (HI)

Setting a size of active window according to resolution

The function allows to emulate the size of required application window in another device.

Item **Window size** from menu [System](#) opens following window with details allowing to set required window resolution.



Selected resolution causes the stretch/reduction of the window same as by moving right bottom window corner. Left upper corner keeps the position (window stretches, doesn't move - no centre nor other logic)

The window can be stretched/reduced beyond the monitor border provided that title bar is visible partially to enable the movement of the window by using mouse drag.

Example: Screen with resolution 1680x1050 should have the features like screen with resolution 1280x1024.

Without this described feature, it is not exactly possible to draw the window, which would visually match this solution, i.e. the graphic symbols should not be deformed (the layout manager can be an alternative, but it allows only the needed visibility of all objects).



Related pages:

[Access to the HI process](#)