

# Processing of generated files (Object Groups)

## Object group - processing of generated files

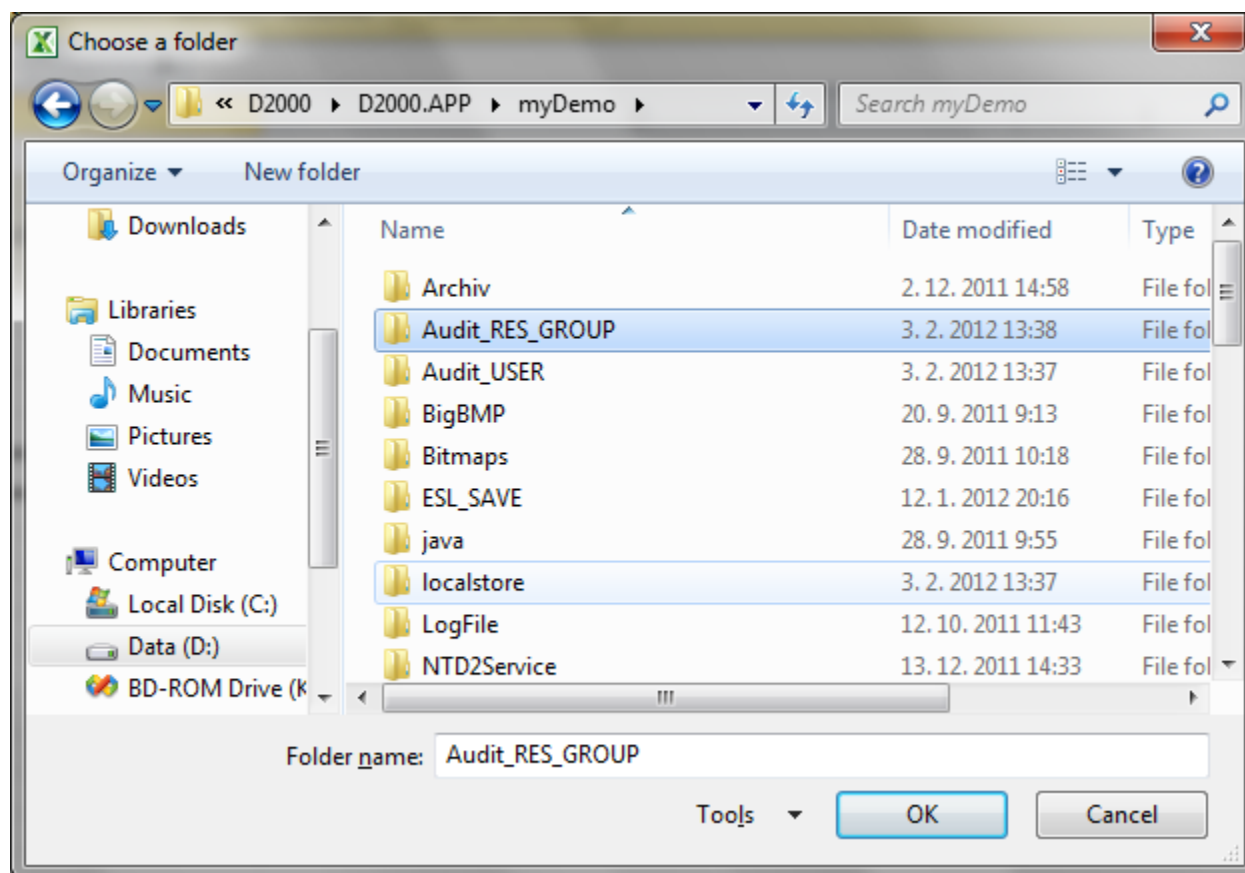
The automatically generated files are processed in **MS Excel** with the help of **GroupObj\_Report.xls**, which is placed in [the installation directory](#), subdirectory **Utils**.

After opening the file **GroupObj\_Report.xls**, the first sheet is actually a form to generate a report.

Naposledy zvolená cesta: D:\D2000\D2000_APP\UNI\Audit		Generuj report
Dátum od: 3.7.2012		
Dátum do: 10.7.2012		

The options **Date from** and **Date to** define the period, from which the changes will be transferred to the report. If **Date from** is not defined, all changes up to **Date to** will be transferred. If neither **Date from** nor **Date to** are not defined, all changes will be transferred. This filter does not relate to the original object configuration.

After clicking the button **Generate report**, the dialog box opens to choose the directory that contains the generated XML files. Select a particular directory and click on the OK button.



Then all XML files are loaded automatically into the second sheet (**Data**).

## Parameters (columns) in table

The table is divided into two parts – [operations](#) and [configuration parameters](#) (the header of columns has different colors).

	F	G	H	I	J	K	L	M
1	Komentár	Proces	Počítač	Meno	Popis	Objekty		
2				Home_s	Home group for s	Arial10B.STL	Arial12B.STL	Arial8.STL
3		ws1tmat1	ws1tmat1	Home_s	Home group for s	Pridané: D.ai_01, D.ai_02, L.linka0	Odobraté: D.BigOne, D.LongTime, D.pureOHL,	
4		ws1tmat1	ws1tmat1	Home_s	Home group for s	Pridané: L.linka01 (s potomkami),	Odobraté: D.ai_01, L.linka01 (s potomkami),	
5				Home_tmatej	Home group for tmatej	B.stanica1_01 (s potomkami)	P.P_Int01	P.real_01
6				Home_tstolicny	Home group for tstolicny	SD.DENNIK_VW_DISP		

The meaning of the columns:

## Operations

Column in report	Meaning
ID	HOBj of a user in the D2000 System.
Name	User name in the D2000 System.
Log time	Time of log.
Operation	Type of operation.
Success of operation	Flag of success of the executed operation.
Comment	A comment (additional information).
Process	Name of the process that executed the operation.
Workstation	Name of the workstation from which the operation was done.

### Type of operations

Type	Export of configuration	Description
INSERT_MEMBER_RG	yes	Added one member to the group.
CLONE_MEMBER_RG	yes	Added one member to the group.It was created by calling the ESL action COPYOBJECT.
DELETE_MEMBER_RG	yes	Removed one member from the group.
DELETE_ALL_MEMBERS_RG	yes	Removed all members from the group.
DELETE_OBJECT_RG	yes	One member was removed from the group due to its deletion.
CONFIGURE_NEW_RG	yes	Create a new <i>Object group</i> in D2000 CNF
CONFIGURE_SAVE_RG	yes	Change of Object group configuration in D2000 CNF.
CONFIGURE_DELETE_RG	yes	Deleting of Object group.
XML_IMPORT_NEW_RG	yes	Create a new Object group by XML Import.
XML_IMPORT_SAVE_RG	yes	Change of Object group configuration by XML Import.
INITIALIZATION_FILE	yes	The initial configuration – file <i>MenoSkupinyObjectGroupName_000000000000000.xml</i> .

## Configuration parameters

They are derived from the [configuration parameter](#) of the *Object group*.

The meaning of columns in the table (they come after the columns about operations):

Column in table [value]	Configuration parameter in D2000
Name	Name of D2000 object
Description	Description
Objects [Object name [(with children)]] <sup>1)</sup>	Object name (list)

<sup>1)</sup> The first record contains the list of an object group. Each object is its own column. The number of displayed objects (245) is limited by the number of columns in MS Excel. Other records display the status change against the previous status in two columns: Added and Removed (e.g.: "Added: U. OD\_Mail\_UserNameSend,","Removed:").



**Related pages:**

[Object Group - monitoring changes in configuration](#)  
[Object Group - setting of full monitoring](#)