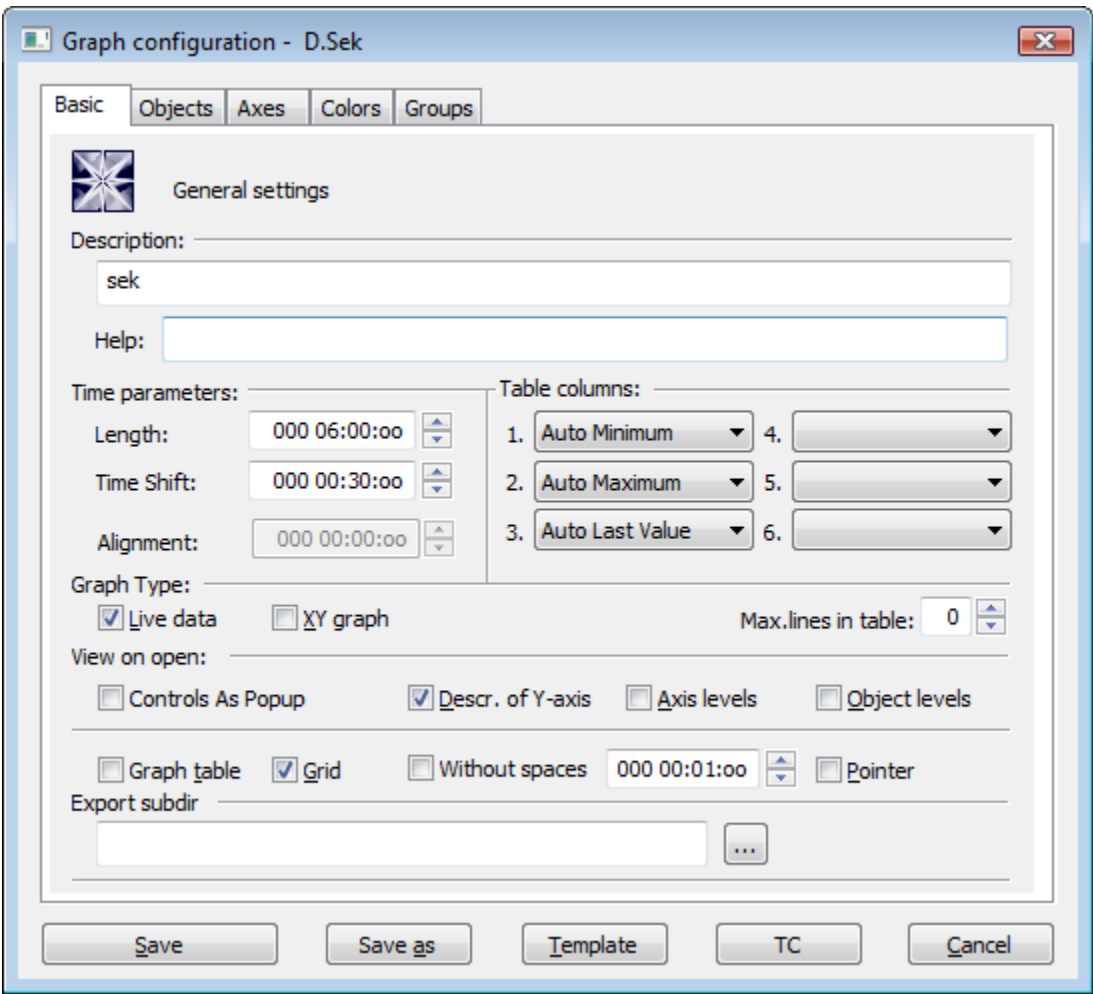


# Basic (Work with D2000 HI)

## Description of "Graph configuration" dialog box - Basic

Basic parameters of the graph are being defined in the **Graph configuration** dialog box - **Basic** tab.



### Description

A text string describing the graph. Description along with the name will be displayed in the list of graphs. Possibility to use the [Dictionary](#) (to open press **CTRL+L**).

### Help

The parameter allows to define an [application help](#) page to be opened after pressing the key F1 while the graph is active. If the parameter is not defined, there will be opened the standard D2000 help.



### Time parameters

<b>Length</b>	Time length determines the range of horizontal time axis (x-axis).
<b>Time shift</b>	The parameter <b>Time shift</b> relates to a time length. It sets a periodic beginning of time axis. If time shifts is e.g. 1 hour then time axis will begin with whole hour. The parameter is enabled, if the parameter <b>Live data</b> is checked.
<b>Alignment</b>	The parameter determines a periodic beginning of the time axis. If the parameter is e.g. 1 hour, the time axis will begin by a whole hour. The parameter is enabled, if the parameter <b>Live data</b> is NOT checked.

### Table columns

The parameters allow to define the contents at most 6 columns of the [graph table](#). There are the following options:

- *Minimum* - minimum object value within the time interval defined for the graph

- *Auto Minimum* - minimum object value within the time interval defined for the graph - the column is visible only when graph displays the non-live data (the parameter [Live data](#) is not checked or when user sets the past by button  **New time interval**)
- *Maximum* - maximum object value within the time interval defined for the graph
- *Auto Maximum* - maximum object value within the time interval defined for the graph - the column is visible only when graph displays the non-live data (the parameter [Live data](#) is not checked or when user sets the past by button  **New time interval**)
- *Sum* - sum of all valid object values within the time interval defined for the graph
- *Weighted Average* - weighted average of all valid object values within the time interval defined for the graph
- *Arithmetic Average* - arithmetic average of all valid object values within the time interval defined for the graph
- *Last Value* - last object value
- *Auto Last Value* - last object value - the column is visible only when graph displays the live data (the parameter [Live data](#) is checked) and graph changes because of new data are received
- *Universal* - content of the column is defined by the parameter [U.C.](#) in the object configuration or the function `%HI_SetGraphLineStat`

**Note:** For graphs containing live data (the parameter [Live data](#) is checked), there are evaluated all values within the time interval including last value. Last value of non-periodic data is not evaluated.

## Graph Type


<b>Live data</b>	The parameter allows automatic drawing the flows of the objects, values of which are being changed in time (live data).
<b>XY graph</b>	If the option is marked, it is XY graph, otherwise it is the time graph.

## Max. lines in table

Maximum lines that are displayed in the table below graph. If there are defined more flows in the graph, they will be available through the scrollbar.

## View on open

The checkboxes are used to show or hide the particular parts of the graph window after opening. Checked items mean that corresponding parts will be displayed after opening the graph. Descriptive graph table, pointer, grid and common y-axis settings may be enabled / disabled in the graph window by means of corresponding [buttons](#).


<b>Contr ols as popup</b>	Disables the display of <a href="#">control buttons</a> in graph. They are replaced by a popup menu with the control buttons. This menu opens after right clicking on the area for drawing the description of axes in graph.
<b>Graph table</b>	Shows / hides the descriptive graph table. The button has three states and enables to configure two ways of hiding the table in connection with the size of graph window. First way enables to hide / show the table after clicking  . It is indicated by grey / yellow color of table icon in the graph. The second one enables to hide the table after the graph window is reduced, which is indicated by dark grey / red color of icon.
<b>Grid</b>	Shows / hides the grid.
<b>Descri ption of Y- axis</b>	Enables / disables the description of Y-axis if is defined (the parameter <a href="#">Axis description</a> in the <a href="#">Axis configuration</a> dialog box).
<b>Axis levels</b>	Displaying graphs on different levels according to the membership to a particular axis. <b>Note:</b> If no graph is bound to an axis, the axis (and the level belonging to it) is not displayed.
<b>Object levels</b>	Displaying graphs on different levels according to the membership to an explicitly specified level - which can be set in <a href="#">graph configuration dialog box</a> .
<b>Witho ut spaces</b>	A space without data is not drawn (removed from graph). The size is set in a spin box. It relates to every flow which does not contains any data. The removed section starts from a rounded time according to section size and takes up to an integral multiple of the section size. If this value is 0 (zero), this feature is disabled. It can be activated from script when setting the interval on value higher then 1 minute.
<b>Pointer</b>	Shows / hides the pointer.

## Color palette

Selection of [color palette](#) that will be used for configuration of given graph.

## Export subdir

Setting the export subdirectory that can be done in two ways:

1. Direct entering to the edit field.
2. Clicking the button , which opens the window to search the required directory with CVS.  
Click the **OK** button to confirm your selection. If CVS subdirectory with *Repository file* is not placed in that directory, the user can cancel the action or use the selected path but without the path to **XML Repository folder** at the beginning. This path will occurs in the edit field.



**Related pages:**

[Configuration of graphs](#)