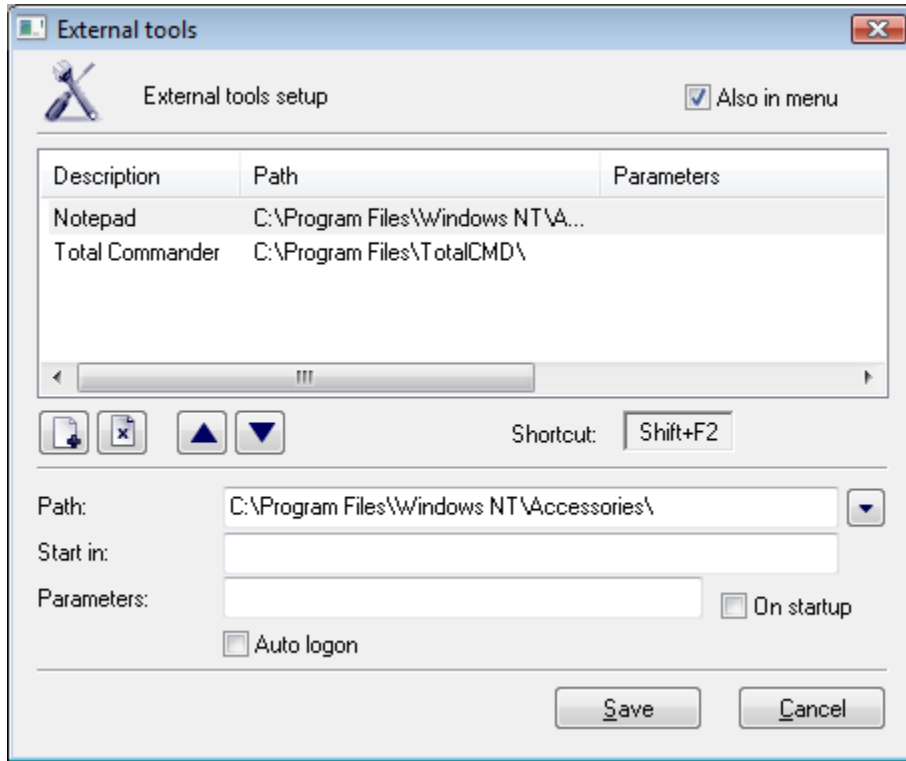


Configuration of External Tools (Work with D2000 HI)


Configuration of external tools

Process [D2000 HI](#) allows to define so-called external tools. These tools allow to start various external applications directly from the process desktop. Defined external tools are assigned to the buttons with number captions from 1 up to 8 in the [User toolbar](#). Single applications assigned to the buttons are started clicking the corresponding button in user toolbar or using a keyboard shortcuts (SHIFT+F2 up to SHIFT+F9).

Definition of external tools is performed in the following dialog box.



Configuration of an external tool

1. Select the **External tools** item from the **Configuration** menu. It opens the **External tools** configuration dialog box.
2. Click on button  **New**. A new line is added into the table ("New item" text in the first column).
3. Type a description of the external tool. The description overwrites "New item" text. Possibility to use the [Dictionary](#) (to open press **CTRL+L**).
4. Define "exe" file path of the external application - the **Path** input box.
5. Enter the work directory of the external application into the **Start in** input box and application start parameters into the **Parameters** input box.
6. Check the **Also in menu** box to insert the external tool into the **Tools** menu in Main menu.
7. Click the **Save** button.