

Logon (Access to the HI Process)

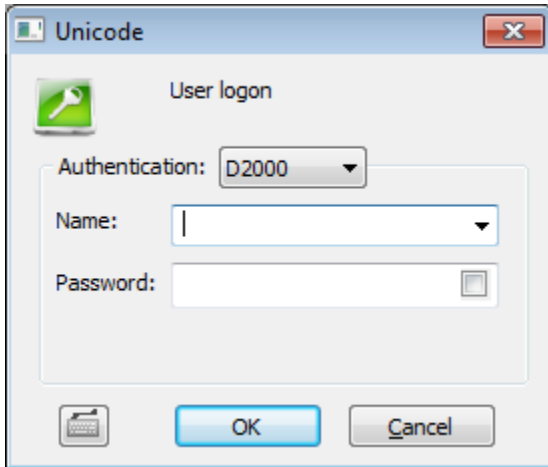
HI process - Logon

Operator must be logged on to work with a process [D2000 HI](#). His/her operating range depends on:

- configuration of operator's access rights to individual objects of the D2000 system,
- set of permitted operations - possibility to change password, print, etc.

To log on to the HI process use the following way:

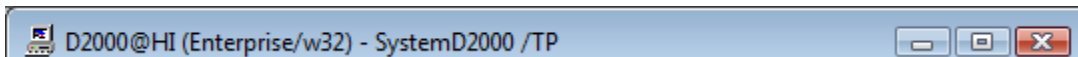
1. Select the **LogOn** item from **System** menu (or press CTRL+L).
2. Enter the name and password into opened dialog box (if the checkbox in the **Password** field is checked, the password will be displayed).
According to the access rights, corresponding operations will be available.



The logon dialog box is opened automatically after starting the process [D2000 HI](#) with the name of the last logged on user.

If Enhanced security is a part of your D2000 system licence, the process [D2000 HI](#) reads a **logon key** (security token) from client computer. Logon key is necessary for user to log on to a D2000 system with *Enhanced security*. The user name is set according to the key which cannot be changed and only password is typed.

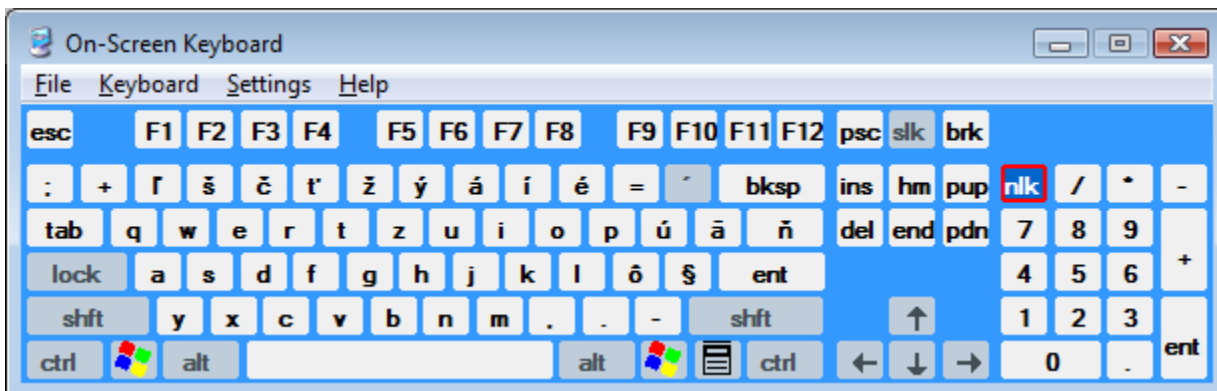
Operator's full name (not the logon name) defined at the user configuration is displayed on HI title bar after his/her logon.



The validity of password is limited. An administrator of system sets this option at configuration of user.

After the password expires the user will be warned five times to change the password. Also the [dialog box](#) to change the password displays. If user ignores this warning, the system will deny the access into application at last attempt - the account will be locked. The locked account can change only administrator of the system.

Clicking on the button  opens an on-screen keyboard.





Related pages:

[Access to the HI process](#)