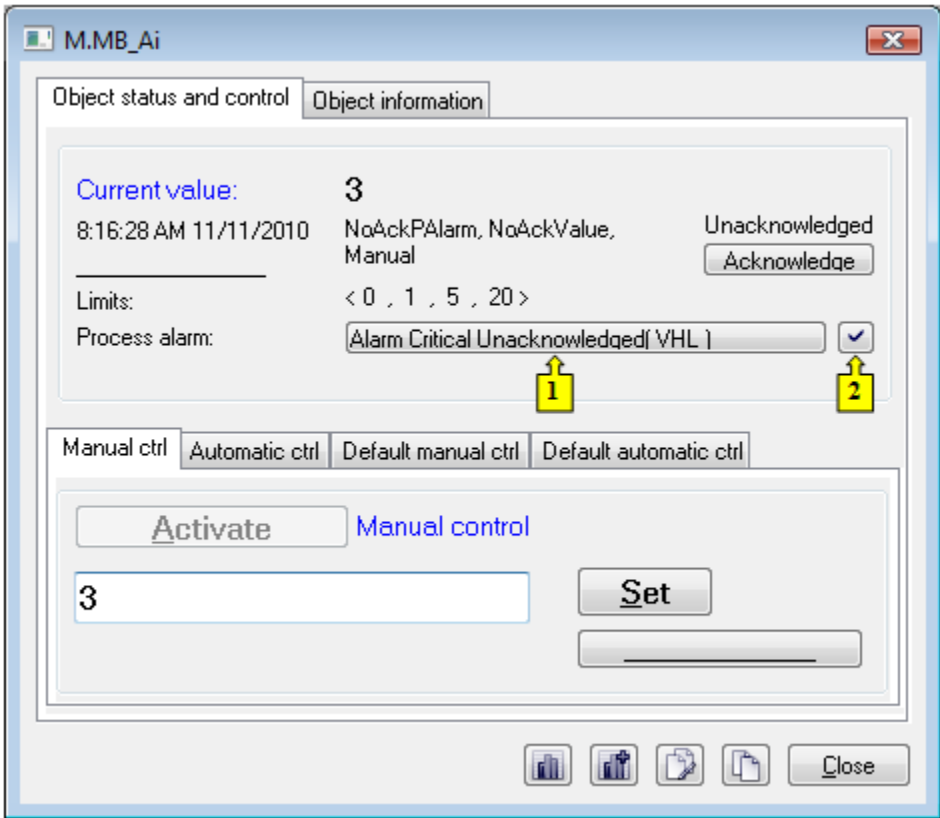


Controlling the Process Alarm by means of the Object Control Window (Work with D2000 HI)

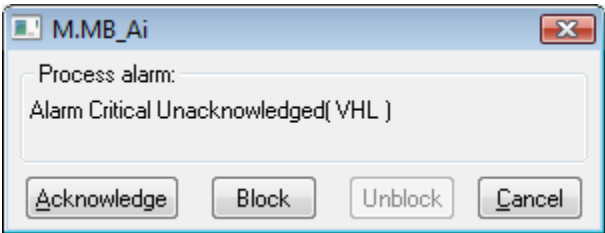
Controlling the process alarm by means of the object control window

Process alarms may be controlled using the control window of the object, for which a particular alarm is defined. An example of such a control window is shown in the figure below.



1	Opens the dialog box to control the given process alarm.
2	Acknowledges given process alarm.

The button to control the current process alarm (1) contains information on the status of the process alarm. Clicking the button opens the following dialog box.



Acknowledge	Acknowledges the process alarm.
Block	Blocks the process alarm.
Unblock	Unblocks the blocked process alarm.

Close	Closes the dialog box.
<hr/>	