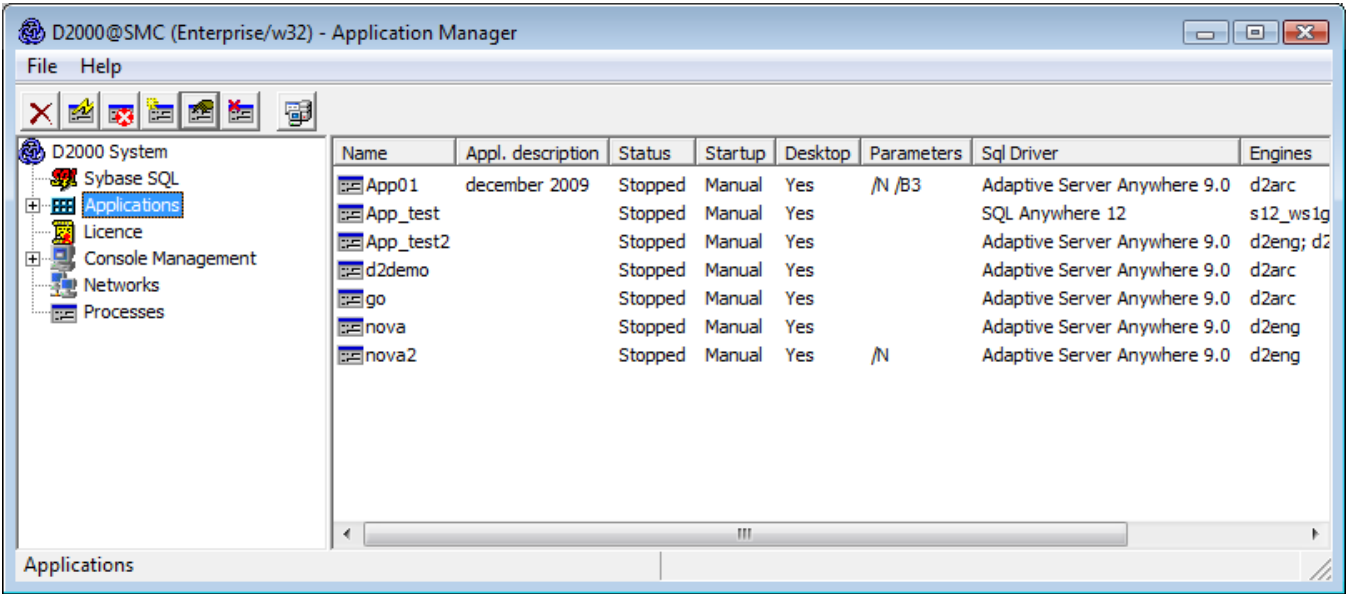


D2000 Applications Configuration

D2000 system was projected to install more applications of one D2000 system version on one computer.

The process **D2000 Application manager** (*d2smc.exe*) provides the complex management not only of applications, but also other system facilities. A user who wants to work with the process must be logged on to the operating system with **administrator access rights**.



If the **D2000 Application Manager** is used via Remote Desktop, it should be used for the purpose of administration (*mstsc.exe /admin*).

A user who has no special access rights, set in operating system Windows, can perform only limited activities which relate to process **D2000 Application Manager**.

The process **D2000 Application Manager** is a client process of D2000 system, that allows:

- database servers management
- D2000 system application management
- showing the overview of the installation license options
- management of interactive consoles connected to D2000 Server
- management of client's logon to D2000 Server
- management of running application's processes (starting, stopping processes, sending commands)



Related pages:

[System processes](#)