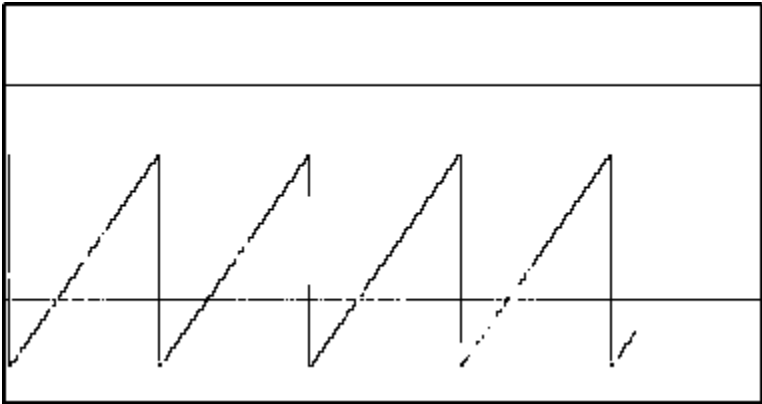



# Trend

The trend displayer is placed in a picture and it allows displaying the time flow of the values of objects. One trend is able to display values for up to four objects.  
The following figure shows an example of a trend. Two red horizontal lines represent limits defined for the trend.

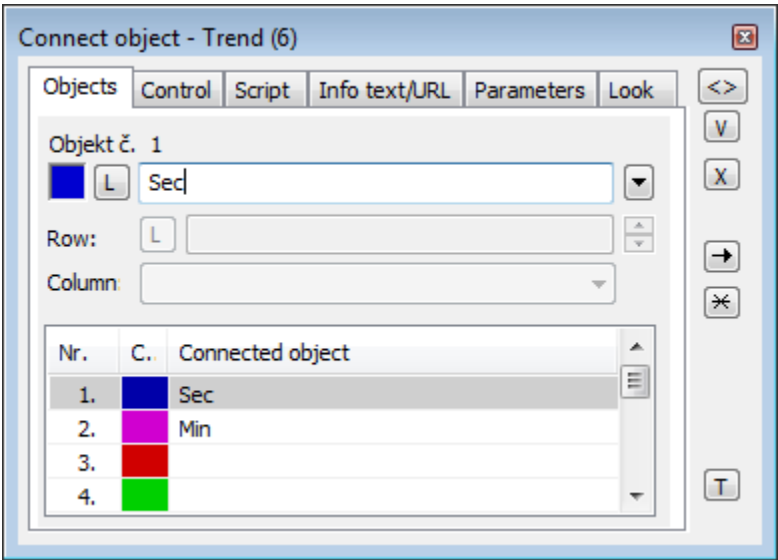


## To create a Trend displayer

1. In the [Drawing toolbar](#), click the button **Trend** .
2. Point the mouse cursor to the position of the first trend corner and click.
3. Point the mouse cursor to the position of the diagonal trend corner and click.

The parameters for connecting the displayer are being configured in the palette [Connect object](#) through the following tabs:

## Objects



Object nr. 1 up to Object nr. 12

Each displayer of the *Trend* type can display the values of as many as 12 objects. So the tab **Objects** contains input edit boxes allowing to define 12 objects. To define the objects to display in the displayer either enter their names or select them from a list opened by clicking the button placed right from the input box.

Color for displaying given object is defined by clicking the button placed left from the input box.

For an object of the [Structured variable](#) type, there must be a defined column name (the parameter **Column**) and row number (the parameter **Row**). For an object of the [Value array](#), you must define an item (the button **L**), whose value will be displayed.

## Control

---

The parameters placed on the tab are identical to the parameters on the tab [Control](#) of the **Connect object** palette.

## Script

---

Reference variable

Specifies the name of the displayer in the form of a reference variable for use in the picture script.

Metadata

Assignment of application data ([metadata](#)) to a graphic object. If the object contains some metadata, the name of the first record will be displayed on the button. Multiple records are indicated by "...".

Event

The listbox allows the user to select an [active picture event](#) for the displayer. The listbox contains the following active picture events:

- [OnClick](#)
- [OnMouseDown](#)
- [OnMouseEnter](#)
- [OnMouseLeave](#)
- [OnUserInput](#)

Event Handler

The button opens the active picture script to define the active picture event specified by the parameter **Event**.

## Info text/URL

---

Info text

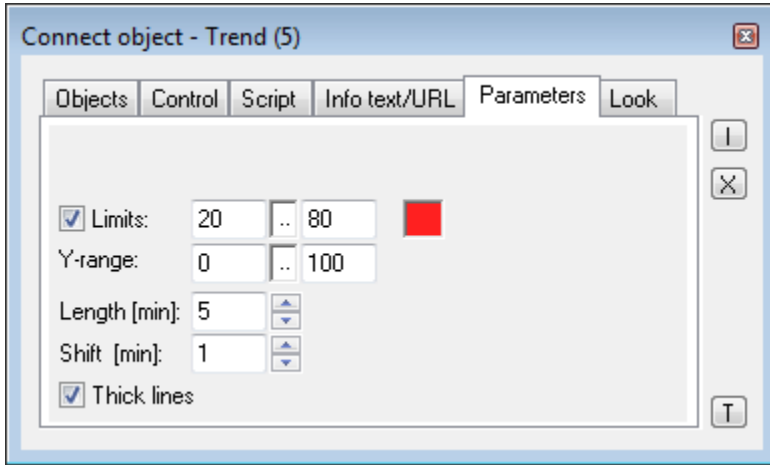
Text to display as a tooltip when the user points the mouse cursor to the displayer in the picture opened in the [D2000 HI](#) process. Possibility to use the [Dictionary](#) (to open press **CTRL+L**).

URL

Definition of URL address to open a web page from a picture. The address may also be set in the picture script by the function [%HI\\_SetOBJURL](#).

## Parameters

---



Limits

Definition of limits of the trend. To define limits, it is necessary to check the button placed left. Then you can enter the values of the limits. Clicking the color sample placed right opens the [color palette](#) to select the colors of the limits.

Y-range

Definition of a range of y-axis (vertical axis).

Length

The parameter defines the range of the time axis (horizontal axis).

Shift

It defines a shift of the time axis when the drawing of flows reaches the right margin of the time axis.

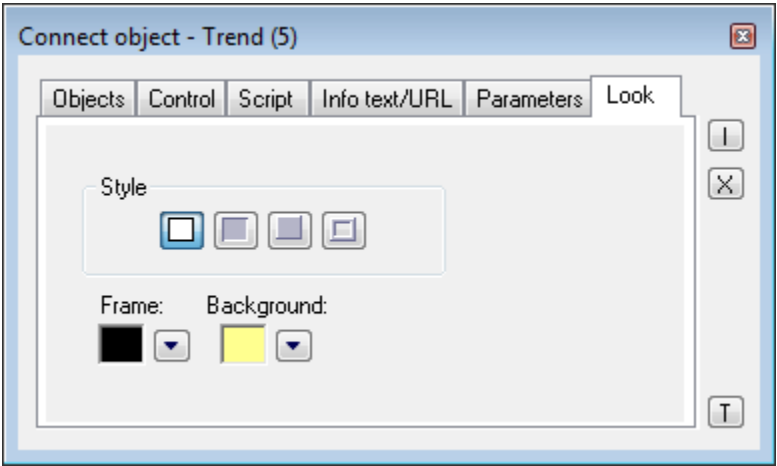
Thick lines

If the parameter is checked, flows displayed in the trend will be drawn by a thick line.

## Look





---

The appearance of the displayer is being configured in the tab **Look**.



Style

Definition of a style of the trend.

	The trend is drawn with the frame and background.
	3D effect - sunken trend.
	3D effect - raised trend.
	The trend is drawn with a 3D frame.

Frame and Background

The parameters **Frame** and **Background** allow defining colors for the parts (frame and background) of the trend. Color is defined by selecting from the [color palette](#) opened by clicking the button placed right from the color sample of a correspondent parameter.

**Note relating to D2000 Thin Client**

Trend displayer is not implemented in Thin Client.  
For more rules see the page [Drawing rules and object properties for the D2000 Thin Client](#).



**Related pages:**

- [Displayers](#)
- [Graphic object manipulation functions](#)