

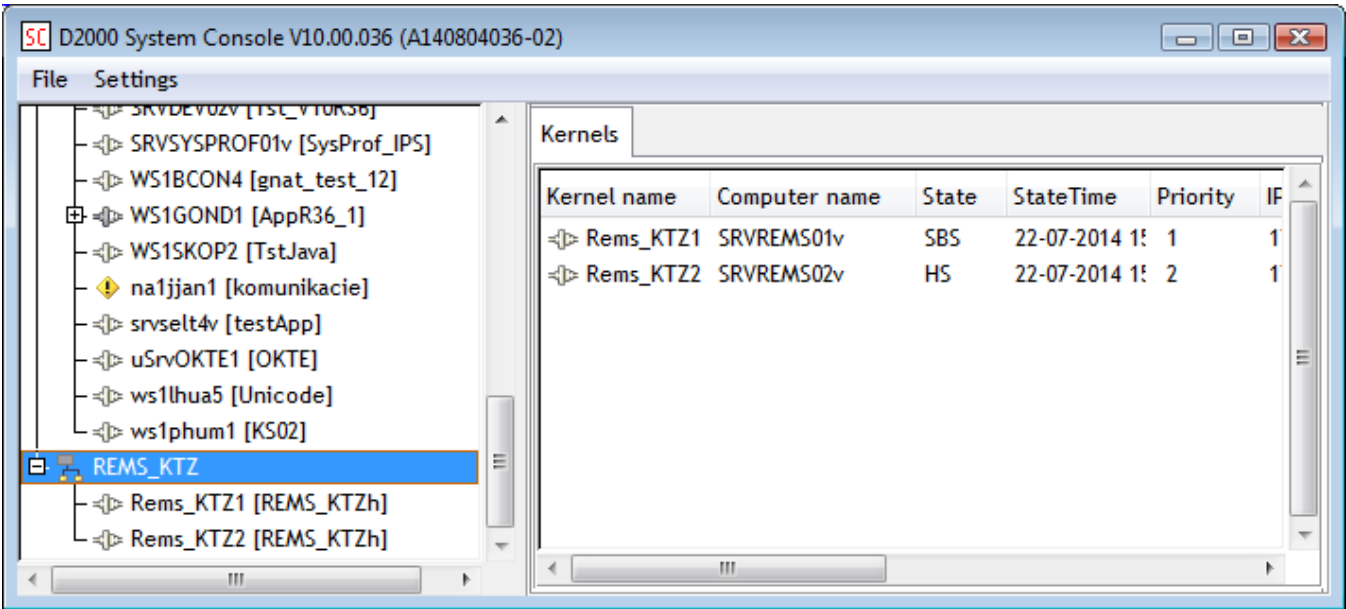
# Text Console

## D2000 System Console environment - text console

This is a part of the [D2000 System Console](#) process window, which displays detailed information on the selected redundant group, server or process. Individual categories are divided into tabs and users can switch among them.

[Redundant group information](#)  
[Server information](#)  
[Process information](#)

### Redundant group information



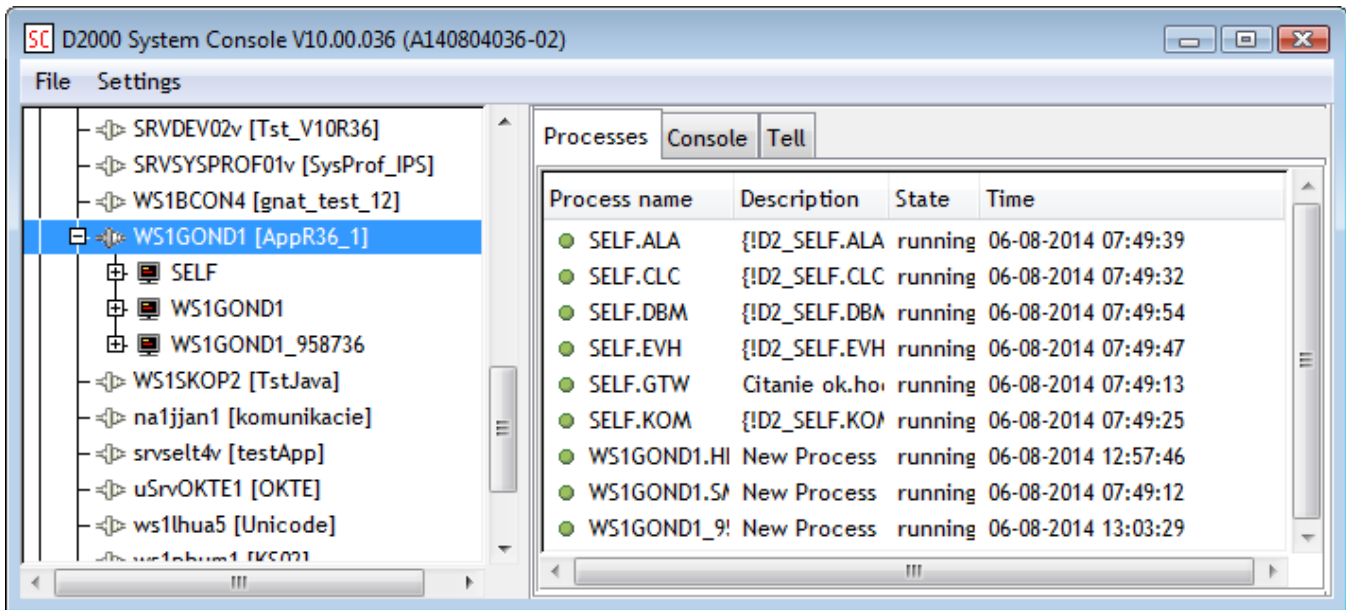
Text console contains the only tab - **Kernels**. It shows the list of servers included in the redundant group.

Column	Meaning
Kernel name	Name of the <a href="#">D2000 Server</a> process.
Computer name	Name of the computer with the <a href="#">D2000 Server</a> process.
State	Server status.
State Time	Time, when the server passed to the current status.
Priority	Server priority within the redundant group.
IP address 1	The first IP address of the computer with the server.
IP address 2	The second IP address of the computer with the server.
Start time	The time when the server was started.

### Server information

For the server, the text console contains the following tabs:

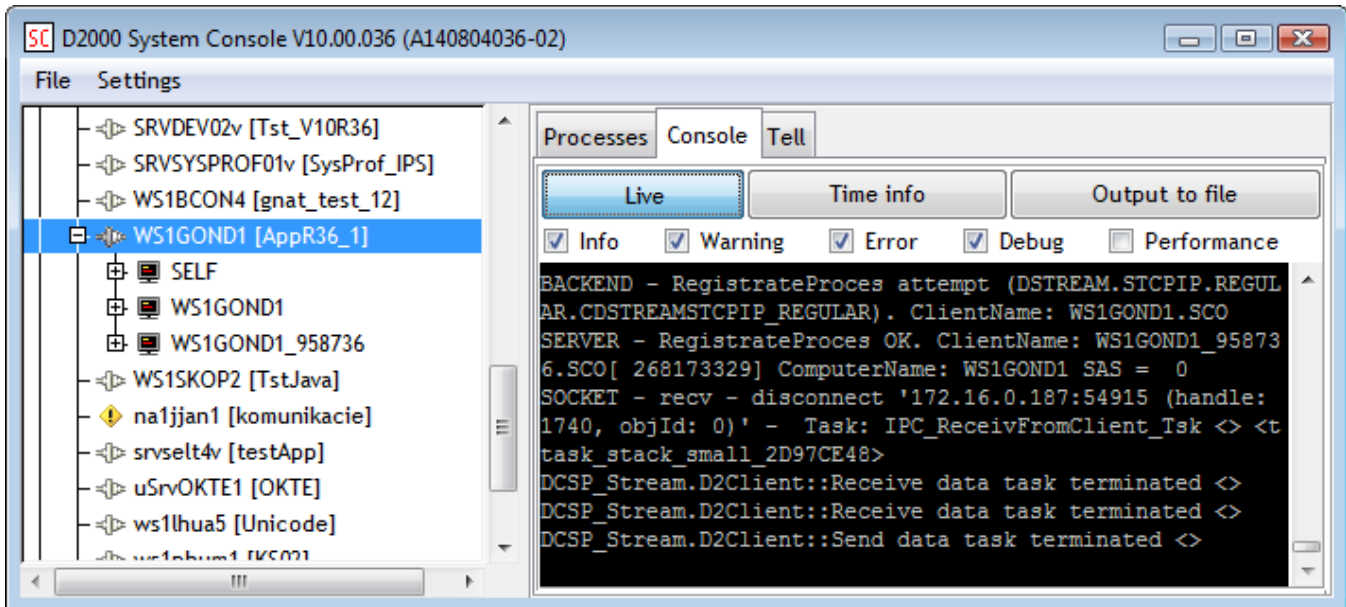
**Processes** tab



The tab shows the list of processes running on the selected server.

Column	Meaning
Process name	Name of the process.
Description	Description of the process.
State	Status of the process.
Time	Time, when the process was started.

**Console tab**

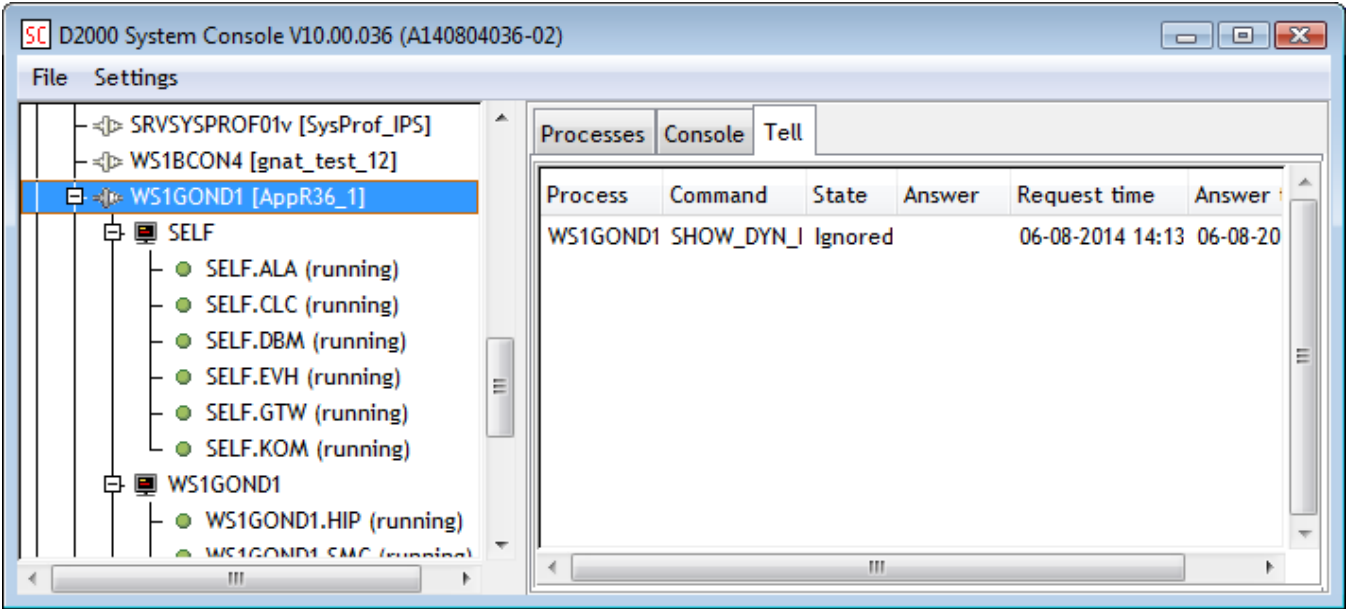


The tab displays the text output of the server. Parameters for displaying can be defined as follows:

Control	Meaning
Live button	Enable/disable displaying outputs.

<b>Time info</b> button	Enable/disable displaying the times of outputs.
<b>Output to file</b> button	Enable/disable saving the output into the text file <i>SRVNAME_PROCNAME.log</i> ( <i>SRVNAME</i> is the name of the computer with the <a href="#">D2000 Server</a> process and <i>PROCNAME</i> is the name of the process).
<b>Info</b> checkbox	Enable/disable displaying outputs of the <i>Info</i> category.
<b>Warning</b> checkbox	Enable/disable displaying outputs of the <i>Warning</i> category.
<b>Error</b> checkbox	Enable/disable displaying outputs of the <i>Error</i> category.
<b>Debug</b> checkbox	Enable/disable displaying outputs of the <i>Debug</i> category.
<b>Performance</b> checkbox	Enable/disable displaying outputs of the <i>Performance</i> category.

**Tell** tab

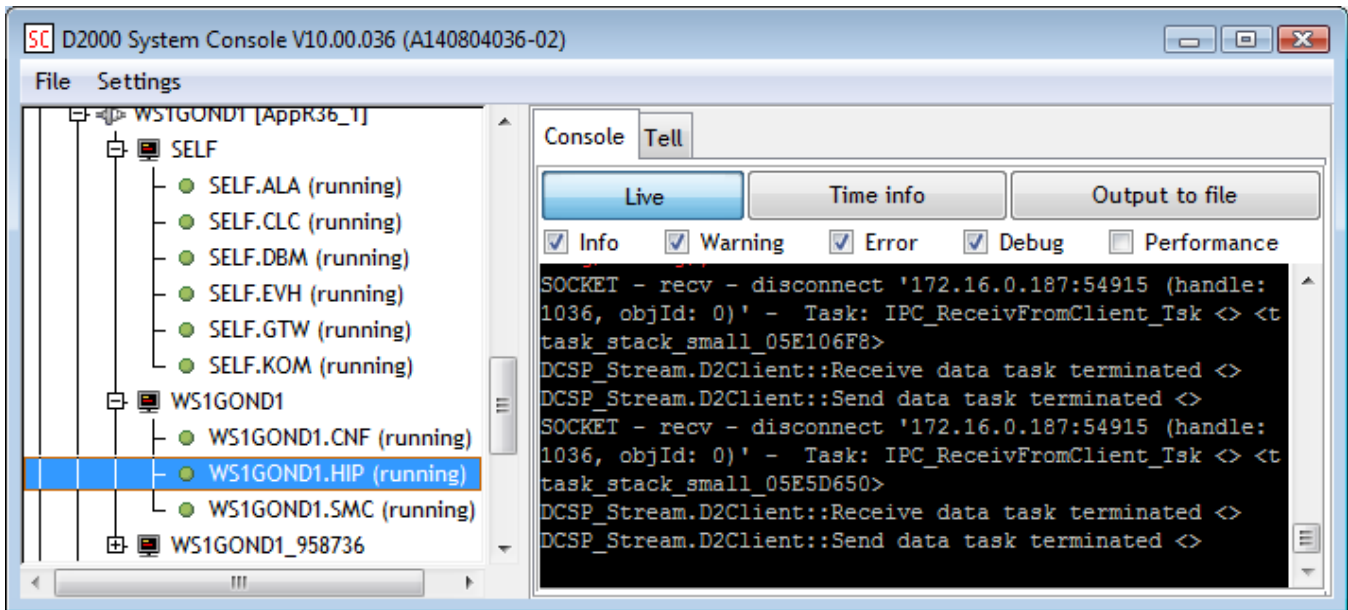


The tab allows showing the states of Tell commands, which were sent.

Column	Meaning
Command	Type of Tell command.
State	Processing state.
Answer	Response to the Tell command.
Request time	The time when the Tell command was sent.
Answer time	The time when the response was received.

**Process information**

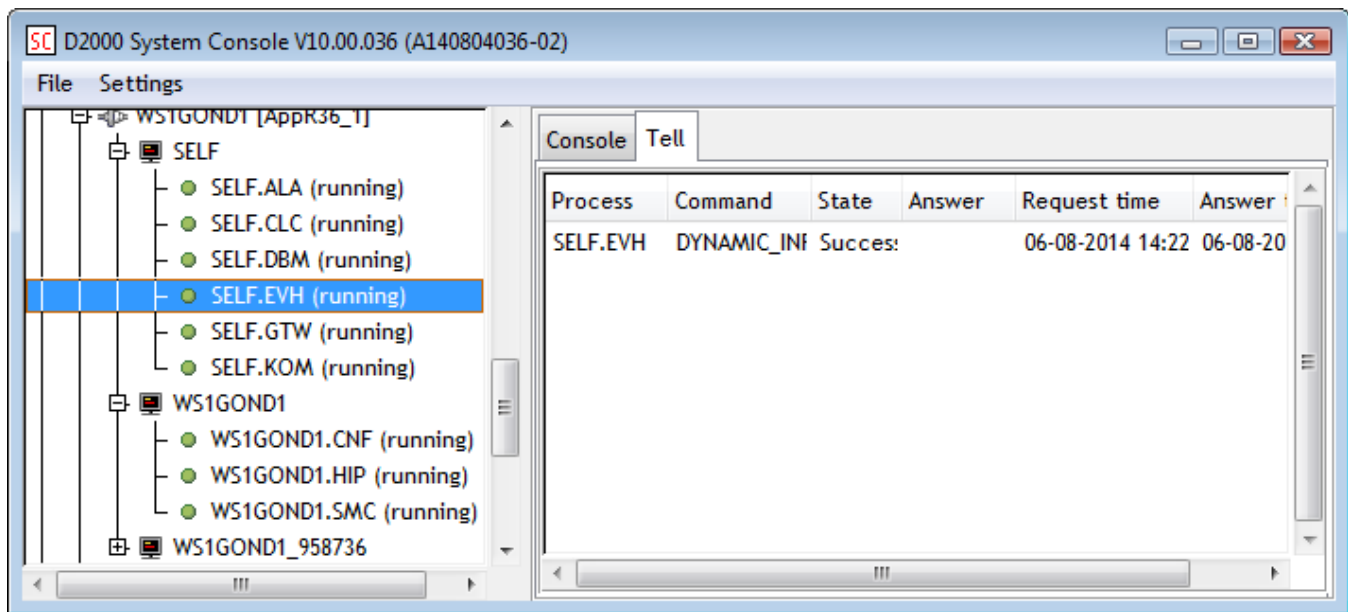
**Console** tab



The tab shows text output of selected process.

Control	Meaning
<b>Live</b> button	Enable/disable displaying outputs.
<b>Time info</b> button	Enable/disable displaying the times of outputs.
<b>Output to file</b> button	Enable/disable saving the output into the text file <i>SRVNAME_PROCNAME.log</i> ( <i>SRVNAME</i> is the name of the computer with the <a href="#">D2000 Server</a> process and <i>PROCNAME</i> is the name of the process).
<b>Info</b> checkbox	Enable/disable displaying outputs of the <i>Info</i> category.
<b>Warning</b> checkbox	Enable/disable displaying outputs of the <i>Warning</i> category.
<b>Error</b> checkbox	Enable/disable displaying outputs of the <i>Error</i> category.
<b>Debug</b> checkbox	Enable/disable displaying outputs of the <i>Debug</i> category.
<b>Performance</b> checkbox	Enable/disable displaying outputs of the <i>Performance</i> category.

**Tell** tab



The tab allows showing the states of Tell commands, which were sent.

Column	Meaning
Command	Type of Tell command.
State	Processing state.
Answer	Response to the Tell command.
Request time	The time when the Tell command was sent.
Answer time	The time when the response was received.