

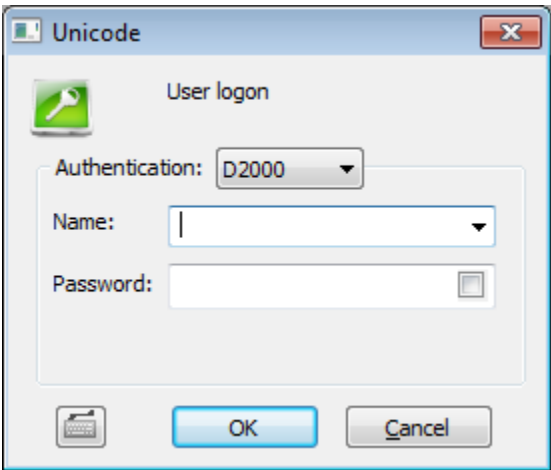
# LogOn (Access to the GrEditor)

## GrEditor - Logon

The operator must be logged on to work with the process [D2000 GrEditor](#). His/her operating range depends on the configuration of the operator's access rights. The access rights are defined by a system administrator in the process [D2000 CNF](#).

The dialog box to log on is opened after starting GrEditor. If the dialog box is not open (e.g. after logoff), to log on to the process [D2000 GrEditor](#), use the following way:

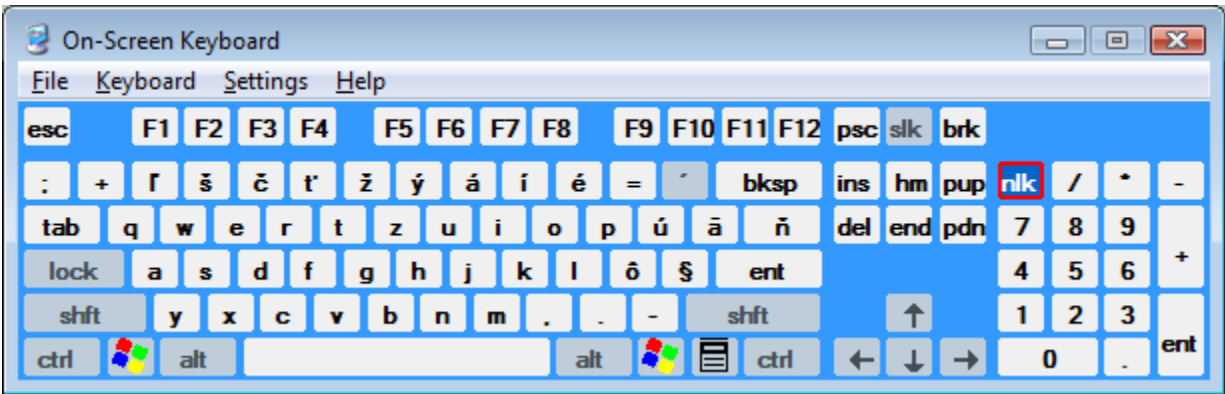
1. Select the item **LogOn** from the menu **System**.
2. Type your name and password into the dialog box (if the checkbox in the **Password** field is checked, the password will be displayed).  
Corresponding operations are permitted according to your access rights.



If [Enhanced security](#) is a part of your [D2000 system licence](#), the process [D2000 HI](#) reads a **logon key** (security token) from the client computer. A logon key is necessary for the user to log on to a D2000 system with *Enhanced security*. The user name is set according to the key which cannot be changed and only password is typed.

After an operator's logon, their full name, defined in the configuration of the operator, will be displayed in the [GrEditor window title bar](#).

Clicking on the button  opens an on-screen keyboard.



### Related pages:

- [Access to GrEditor](#)
- [Starting GrEditor](#)
- [Exiting GrEditor](#)
- [GrEditor - LogOff](#)