

Representation of Data from the Log Database (HI)

Representation of data from the log database

Clicking on the **OK** button in the dialog box [System Logging - Settings](#) opens the following window displaying data from the log database according to defined parameters.

Logging: Ascending - Last 24 hour

1 / 1 (18)

Mask: *

Name	Description	Event rising time	User	Old value	New value	Priority	Incident	Log type
SystemError	Informácia o syst...	3/4/2010 3:00:0...				Critical alarm	TimeChannel CK...	ALR
aaa.HIP	New Process	3/5/2010 2:42:1...	Disconn...	Run	Stop	Information		PRC
ws1phum1.C...	New Process	3/5/2010 2:42:3...	Disconn...	Run	Stop	Information		PRC
ws1pbre1.CNF	New Process	3/5/2010 2:44:2...	Disconn...	Run	Stop	Information		PRC
ws1pbre1.CNF	New Process	3/5/2010 2:44:3...	Connect...	Stop	Run	Information	TCP/IP Client IP...	PRC
ws1pbre1.CNF	New Process	3/5/2010 2:44:3...	SystemD...	Run	Run	Warning	TCP/IP Client IP...	PRC
SV.STM_Ev...		3/5/2010 2:47:1...	SystemD...			Information	Modification	SYS
SV.STM_Ev...		3/5/2010 2:49:0...	SystemD...			Information	Modification	SYS
E.Test_CNT...		3/5/2010 2:50:1...	SystemD...			Information	Modification	SYS
E.Test_CNT...		3/5/2010 2:50:1...	SystemD...			Information	Modification	SYS
E.Test_CNT...		3/5/2010 2:50:3...	SystemD...			Information	Modification	SYS
ws1pbre1_HI...	New Process	3/5/2010 2:51:5...	Disconn...	Run	Stop	Information		PRC
ws1pbre1.HIP	New Process	3/5/2010 2:51:5...	Disconn...	Run	Stop	Information		PRC
III								
ws1pbre1.HIP	New Process	3/5/2010 2:52:0...	Connect...	Stop	Run	Information	TCP/IP Client IP...	PRC
ws1pbre1.HIP	New Process	3/5/2010 2:52:2...	SystemD...	Run	Run	Warning	TCP/IP Client IP...	PRC
ws1pbre1_HI...	New Process	3/5/2010 2:52:4...	ws1pbre...	Stop	Run	Information	TCP/IP Client IP...	PRC
WS1GOND1...	New Process	3/5/2010 2:55:2...	Connect...	Stop	Run	Information	TCP/IP Client IP...	PRC
WS1GOND1...	New Process	3/5/2010 2:55:3...	SystemD...	Run	Run	Warning	TCP/IP Client IP...	PRC

Logging: msec Cancel

	Table columns configuration.
	System logging - settings.
	Save the table data to a file. After clicking the icon, the menu will appear allowing you to save data to a text file, CSV file or to the clipboard. It is also possible to save either all data of the table (All data item) or only selected data (lines).
	Go to the beginning of the table (the first table page).
	Go to the previous page of the table.
1 / 6 (101)	Information about the displayed table - current table page / total number of pages (number of table lines) .
	Go to the next page of the table.
	Go to the end of the table (to the last page of the table).
	Blocks the mask and shows the filter for selection. Text entered into the mask will not be deleted.
	Deletes the text in the filter. The button is active if the text is written in the filter.
Mask	Selection mask to display data in the table - it is applied to the columns Name (in the format *.* AND/OR *.*) and/or Description (in the format * AND/OR *.*). For more information see the topic Defining a mask .

Graphic symbols of event types. Pointing the mouse cursor at a particular symbol displays the name of the event type that the symbol represents.

Here are described the columns of the table (list).

Column	Meaning
Name	D2000 System object name concerning the given event + the graphic symbol showing a group of logged events.
Description	Description of the event.
Event rising time	Date and time of the event rise. If the msec option is enabled then the column displays time data with milliseconds accuracy.
User	Name of operator logged in the system when the event occurred (for processes - this column shows „Connect“ or „Disconnect“). <ul style="list-style-type: none"> • Connect - the process is connected to the process Server • Disconnect - the process is disconnected from the process Server
Old value	Value of object before the event arose.
Incident	Cause of the logged event. In case of event type *LOG* New value *Logon* - the logon of user contains: <ul style="list-style-type: none"> • process name, through which the user has logged on - required, • list of present hardware keys, providing that they are detected, • IP address of the client, providing that the connection was done through the Windows Terminal Services (Remote Desktop) or Citrix MetaFrame. Example: NB1.CNF[480,R][917]WTS:172.16.1.134 The user has logged on to NB1.CNF via Remote Desktop from the workstation with IP=172.16.1.134. The workstation had the HW key with the unique identifier = 480. The server, where the process run physically, had the HW key with the unique identifier = 917.
Priority	Priority (significance) indicates the event's importance. The system supports five priority levels (in order from the lowest priority to the highest one): <ul style="list-style-type: none"> • Information • Warning • Alarm • Critical alarm • Error
Log type	Type of the logged event: <ul style="list-style-type: none"> • ALR - Alarms • SYS - System • PRC - Processes • KOM - Kom • OPR - Operator's interventions • EVT - Events • LOG - Logon / Logoff • MAN - Manual intervention • CHV - Spontaneous value change • TIM - Time logger

Double-click on a line in the table (list) will open the information window, containing well-arranged information about the particular line from the table. This presentation is suitable in case the particular line contains too much information that cannot be completely displayed in a single line. The window contains the buttons to move in the table (list).

In the list there is the possibility to sort data according to the **Event rising time** column. New values are added on the last page for upward sorting and for downward sorting on the first page of the list.

Note

- In case the displayed time interval is floating, the table is horizontally divided into two parts. The lower part comprises the last five events. This feature is applicable for the **Last hour**, **Last 8 hours**, **Last 12 hours** and **Last 24 hours** radio buttons in the [System Logging - Settings](#) dialog box. The table is not divided only in case of defined time interval- the **Exactly** radio button.

Filter usage

Click on button  activates the filter and the mask is blocked whereas the text, written in the mask, is not deleted.

The condition defining the relation between columns **Name** and **Description** displays instead of the mask.


- AND - the condition from both columns
- OR - the condition from the column **Name** or **Description**, eventually from both one

Logging: Ascending - Last 24 hour

1 / 1 [15]

Name AND OR Description

Name	Description	Event rising time	User	Old value	New value	Priority	Incident	Log type
w*	Enter text here	Enter text here	Enter...	Enter text...	Enter text...	Information,Warnin...	Enter text here	ALR,SYS,P...
ws1phum1.C...	New Process	3/5/2010 2:42:3...	Disconn...	Run	Stop	Information		PRC
ws1pbre1.CNF	New Process	3/5/2010 2:44:2...	Disconn...	Run	Stop	Information		PRC
ws1pbre1.CNF	New Process	3/5/2010 2:44:3...	Connect...	Stop	Run	Information	TCP/IP Client IP...	PRC
ws1pbre1.CNF	New Process	3/5/2010 2:44:3...	SystemD...	Run	Run	Warning	TCP/IP Client IP...	PRC
ws1pbre1_HL...	New Process	3/5/2010 2:51:5...	Disconn...	Run	Stop	Information		PRC

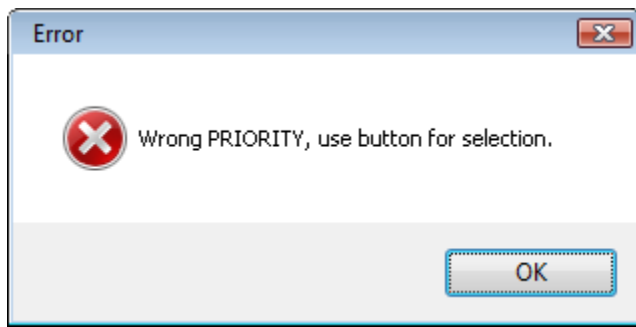
The filter works similarly to a mask, i.e. text can be written into a field.
The columns **Priority** and **Log type** are an exception. Text cannot be written into a filter of these columns but items are chosen from the drop-down list after pushing the button placed close to text field .

Priority	Incident	Log type
Information,Warnin...	Enter text here	ALR,SYS,P...
Information		Information
Information		Warning
Information		Alarm
Warning		Critical alarm
Information		Error
Information		

In the column, the **Log type** user can choose more items.

Log type	Old value	New
PRC	ALR	
PRC	SYS	
PRC	PRC	
PRC	KOM	
PRC	OPR	
PRC	EVT	
PRC	LOG	
PRC	MAN	
PRC	CHV	
PRC	TIM	

If the priority or log type is entered incorrectly, the following window with a message appears:



The changes in the filter will be shown also in dialog box [System Logging - Settings](#).

Text from the filter is deleted after clicking on button . The button is active only if the filter contains some text.



Related pages:

[System event logging](#)
[Configuration of the table displaying data from the log database](#)
[Logged data export](#)