

# Menu Bar (HI)

## HI process environment - Menu bar

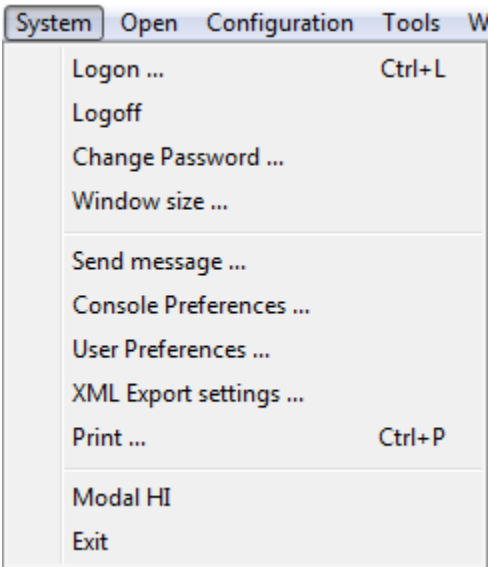
The Main menu bar can contain of the following menus:

- [System](#)
- [Open](#)
- [User menu](#)
- [Configuration](#)
- [Tools](#)
- [Window](#)
- [Help](#)

Presence and contents of the menus depend on the access rights of the user, on the configuration and status of the process [D2000 HI](#). All the basic menus are described in the text below.

### System menu

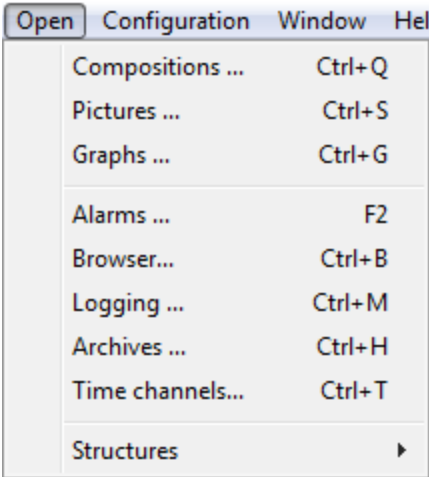
The **System** menu allows to log on/off an user, change password, printing and exiting the process [D2000 HI](#). It contains the following items: **Logon**, **Logoff**, **Change Password**, **Send Message**, **Settings**, **Print**, **Modal HI** and **Exit**.



Logon	<a href="#">Logon</a> to operate with the process <a href="#">D2000 HI</a> .
Logoff	<a href="#">Logoff</a> after finishing your work with the process <a href="#">D2000 HI</a> .
Change Password	<a href="#">Change user's logon password</a> .
Window size	<a href="#">Setting a size of active window according to resolution</a> .
Send Message	<a href="#">Send message</a> to other consoles.
Console Preferences	Opens the <a href="#">Console Preferences</a> dialog box to configure the HI settings for all users on given computer.
User Preferences	Opens the <a href="#">User Preferences</a> dialog box to customize the HI settings for given user.
XML Export settings...	<a href="#">Settings</a> for XML export of the objects.
Print	<a href="#">Print graphic information windows</a> (pictures, graphs).
Modal HI	Enable / disable the modal mode of the process <a href="#">D2000 HI</a> . If process <a href="#">D2000 HI</a> is in the modal mode, you are not able to minimize and resize Hi process window and also switch to other applications. Modal HI allows to switch only to applications started as <a href="#">external tools</a> .
Exit	<a href="#">Exit HI process</a> .

### Open menu

The **Open** menu is used to open graphic information windows, display alarms, the archive and log database. It contains the items: **Compositions**, **Pictures**, **Graphs**, **Reports**, **Alarms**, **Browser**, **Logging**, **Archives**, **Time channels** and **Structures**.



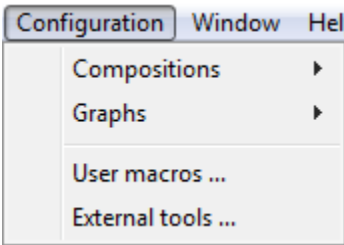
Compositions	Open a <a href="#">composition</a> of graphic information windows.
Pictures	Open a <a href="#">picture</a> .
Graphs	Open a <a href="#">graph</a> .
Alarms	Open the list of alarms.
Browser	Open Browser.
Logging	Browse the log database.
Archives	Browse the archive of historical values.
Time Channels	Browse time channels.
Structures	Open a <a href="#">structured variable</a> ( <b>Structured variables</b> item ) or database table ( <b>Database table</b> item).

## User menu

The **User** menu contents is given at user's configuration by the reference to an object of *HI menu* type which allows to open defined set of pictures, graphs and reports.

## Configuration menu

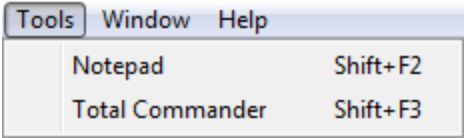
The **Configuration** menu is used to configure graphic information windows. The menu contains the following items: **Compositions**, **Graphs**, **User macros** and **External tools**.



Compositions	Create, edit and delete compositions of graphic information windows - the topic <a href="#">Configuration of compositions</a> .
Graphs	Create, edit, and delete graphs - see the topic <a href="#">Graph configuration</a> .
User Macros	Define, edit and delete user macros - see the topic <a href="#">Configuration of User macros</a> .
External Tools	Define, edit and delete external tools - external applications started from the process <a href="#">D2000 HI</a> - see the topic <a href="#">Configuration of External tools</a> .

## Tools menu

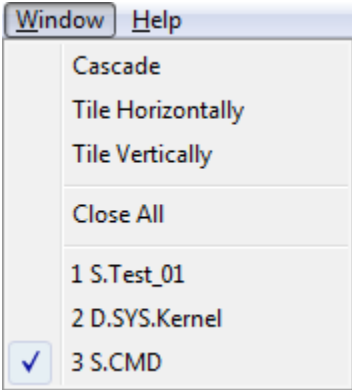
The menu is available only if at least one external tool with the **Also in menu** parameter checked has been defined. The **Tools** menu allows to start individual external tools. External tool - application is started by selecting from this menu or by keyboard shortcuts SHIFT+F1 to SHIFT+F8.



For more information see the topic [Configuration of External tools](#).

## Window menu

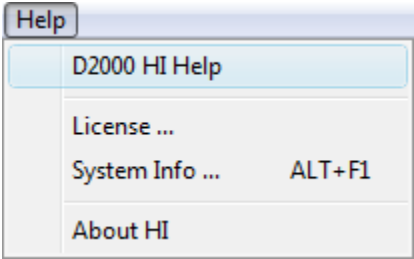
The **Windows** menu contains the items **Cascade**, **Tile Horizontally**, **Tile Vertically**, **Close All** and the list of windows opened on HI process desktop.



Cascade	All windows opened on the desktop of the process <a href="#">D2000 HI</a> are automatically arranged in a cascade.
Tile Horizontally	All windows opened on the desktop of the process <a href="#">D2000 HI</a> are automatically arranged horizontally.
Tile Vertically	All windows opened on the desktop of the process <a href="#">D2000 HI</a> are automatically arranged vertically.
Close All	Close all windows opened on the desktop of the process <a href="#">D2000 HI</a> (including dialog pictures).

## Help menu

The **Help** menu contains the **D2000 HI Help**, **About HI** and **License** items. If a user has an administration rights, in the menu there is other item - **System information**. For other users this item is accessible through ALT+F1.



D2000 HI Help	Opens the on-line HI process Help.
System information	Opens the <a href="#">dialog box</a> that contains the path to the logs of D2000 System processes.
About HI	Shows the D2000 HI info - version, release.
License	Shows the information about range and state of a license.



### Related pages:

[HI environment](#)