
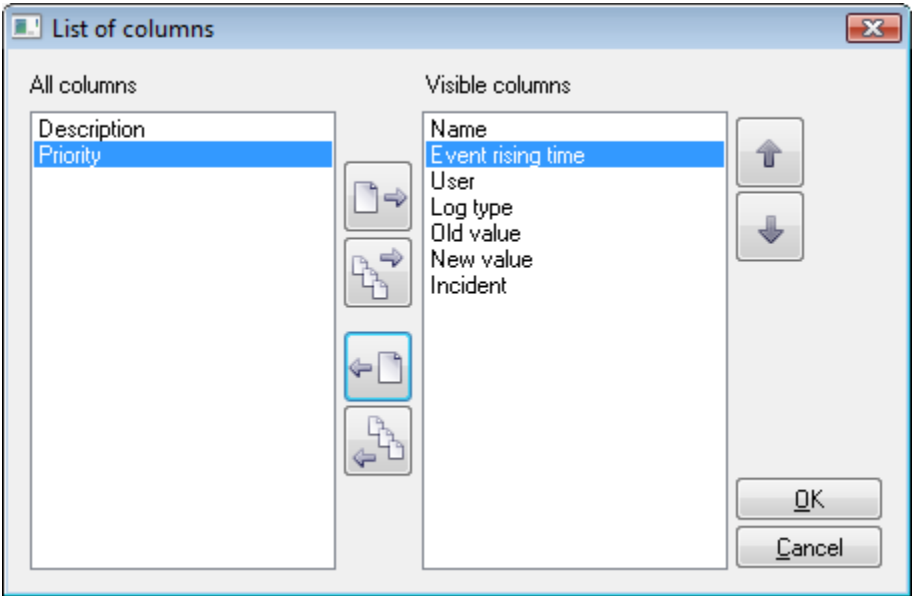








Configure the Table Displaying Data from the Log Database (Work with D2000 HI)


Configuration of the table displaying data from the log database

The following dialog box is opened after clicking  - the **Columns** button. The dialog box allows adjusting the table appearance - show/hide columns and their order.



Button	Function
	Move the highlighted column from the left list into the right list of visible columns.
	Move all columns from the left list into the right list of visible columns.
	Move the highlighted column from the right list into the left list of invisible columns.
	Move all columns from the right list into the left list of invisible columns.
	Move the highlighted column in the right list to the previous position – one position up.
	Move the highlighted column in the right list to the following position – one position down.

Order of the "Visible columns" (on the right side) determines the order of columns displayed in the dialog box displaying data from the log database. A column placed at the first place will be displayed as the first one from the left, the second column will be the second one from the left, etc.

 **Related pages:**
[Representation of data from the log database](#)