


Graph Display Settings

Graph display settings

Clicking on the button  **Graph display settings** in the graph window opens the dialog box allowing the user to set appearance and parameters of graphic flows displayed in the graph. The dialog box contains five tabs, which are identical with the tabs in the dialog box [Graph configuration](#), but there are active only some of the parameters in the following tabs:

- [Parameters](#)
- [Objects](#)
- [Axes](#)

Parameters

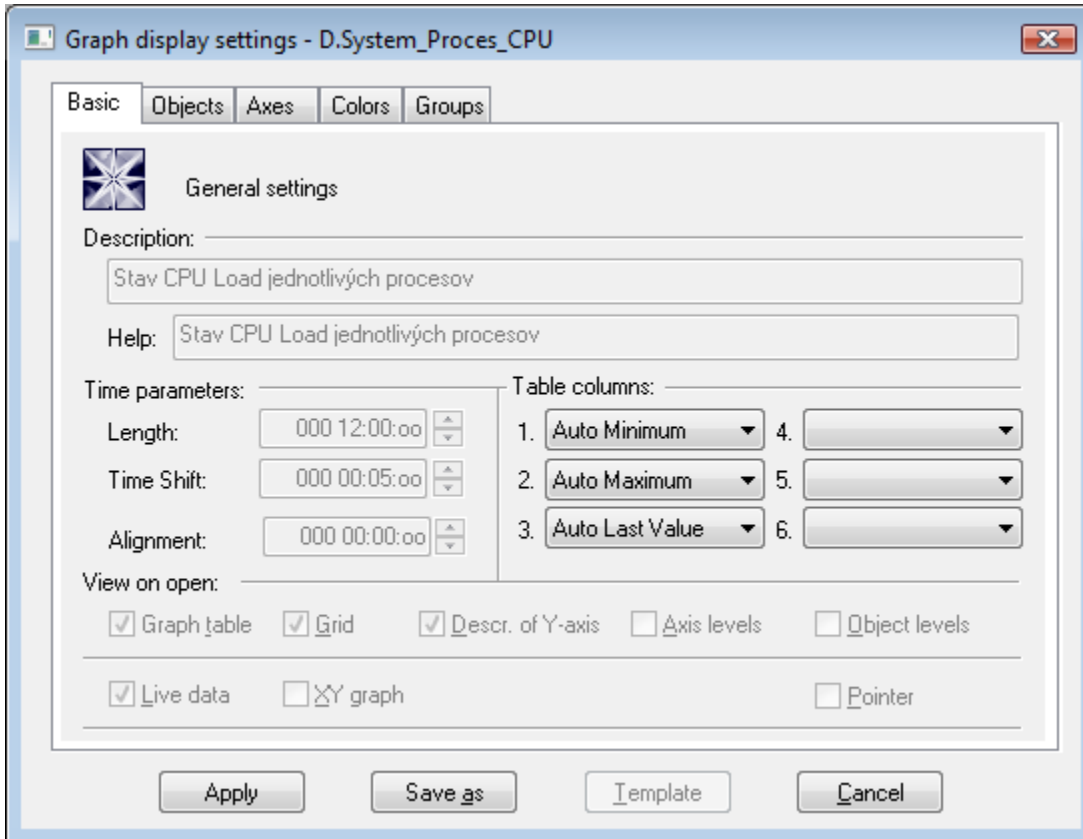




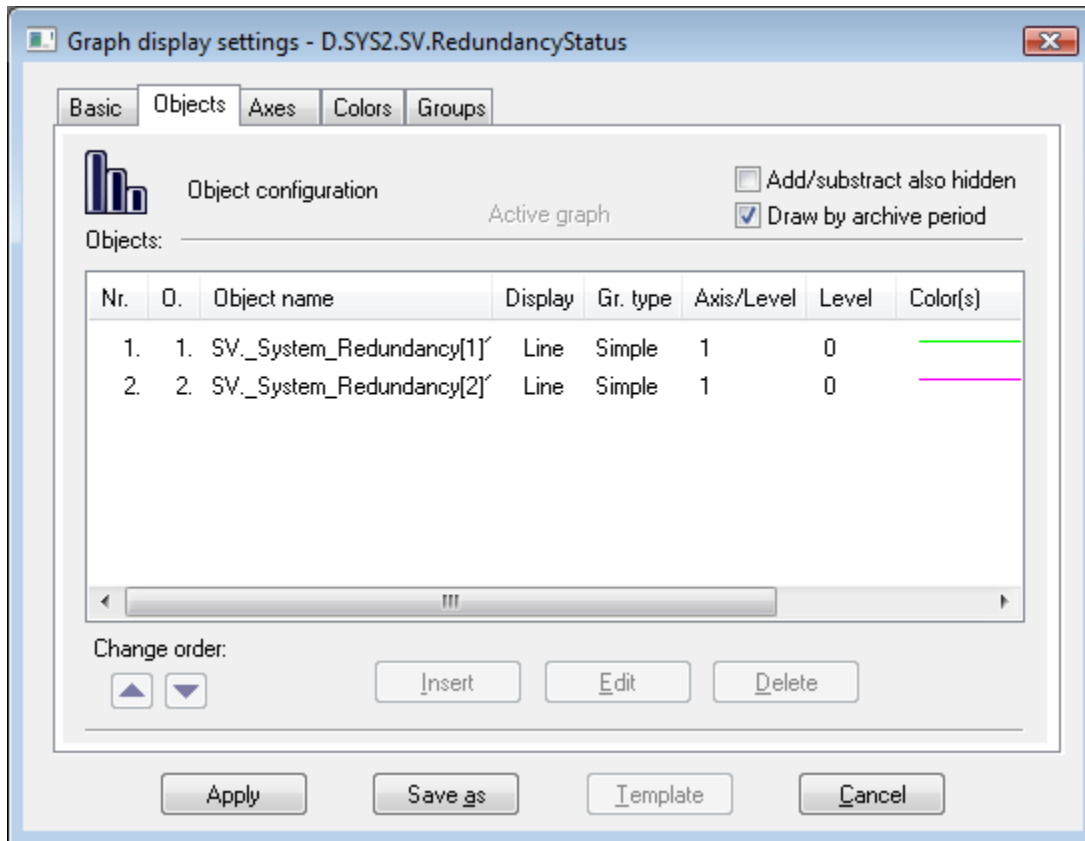
Table columns

The parameters allow to define the contents at most 6 columns of the [graph table](#). There are the following options:

- *Minimum* - minimum object value within the time interval defined for the graph.
- *Auto Minimum* - minimum object value within the time interval defined for the graph - the column is visible only when graph displays the non-live data (the parameter [Live data](#) is not checked or when user sets the past by button  **New time interval**).
- *Maximum* - maximum object value within the time interval defined for the graph.
- *Auto Maximum* - maximum object value within the time interval defined for the graph - the column is visible only when graph displays the non-live data (the parameter [Live data](#) is not checked or when user sets the past by button  **New time interval**).
- *Sum* - sum of all valid object values within the time interval defined for the graph.
- *Weighted Average* - weighted average of all valid object values within the time interval defined for the graph.
- *Arithmetic Average* - arithmetic average of all valid object values within the time interval defined for the graph.
- *Last Value* - last object value.
- *Auto Last Value* - last object value - the column is visible only when graph displays the live data (the parameter [Live data](#) is checked) and graph changes because of new data are received.
- *Universal* - content of the column is defined by the parameter [U.C.](#) in the object configuration or the function `%HI_SetGraphLineStat`.

Note: For graphs containing live data (the parameter [Live data](#) is checked), there are evaluated all values within the time interval including last value. Last value of non-periodic data is not evaluated.


Objects



The list of object contains object name followed by graphic flow type with the mark of drawing mode in regard of zero value. *Axis/Level* column contains the axis number for drawing defined flow and, in case of digital axis, there is also assigned level of the axis. In the column **Color(s)**, there are displayed colors of drawing together with additional information (line type, pattern of flow area filling, selected mark,...).

Exceptions:

- Objects that are not used in graph (alternate objects (*)) and objects which have been deleted by script of picture are not shown in the list of object.

Note: The exceptions described above are relevant for configuration performed through the dialog box opened by clicking the button  in graph window.

Change order

The buttons allows the user to change the order in the list - the buttons are not active.

Insert

It inserts a new object into the graph - the button is not active.

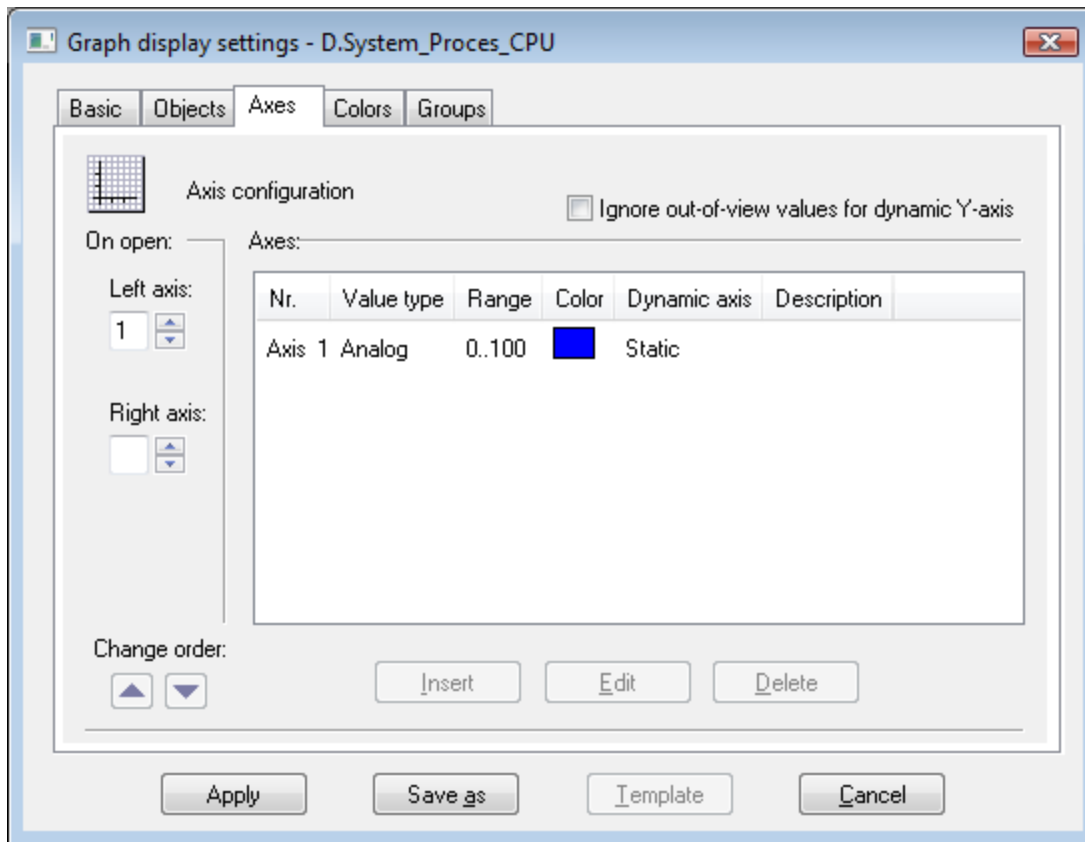
Edit

To edit the settings of an object, double-click the selected object, or click on the selected object and click the **Edit** button. It opens the dialog box [Object configuration](#) to edit the settings for displaying the object in the graph.

Delete

It deletes the selected objects - the button is not active.

Axes



Ignore out-of-view values for dynamic Y-axis

If the parameter is checked, the range of the dynamic y-axis will be determined by the values within the [time interval](#). If the parameter is not checked, the values out of defined time interval will also be taken into account.

Insert

It inserts a new object into the graph - the button is not active.

Edit

To edit the configuration of an axis click twice on the axis, or select the axis and click the button **Edit**. It opens the [Axis configuration](#) dialog box to edit the axis parameters.

Delete

It deletes the selected objects - the button is not active.



Related pages:

[Configuration of graphs](#)
["Object configuration" dialog box](#)