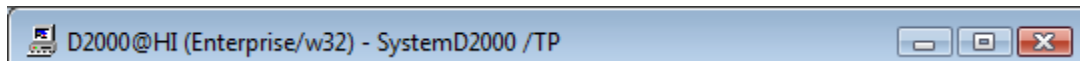






# Title Bar (Work with D2000 HI)

## HI process environment - Title bar

The title bar of process [D2000 HI](#) contains information about the current logged on user.



The button placed in the left corner of the title bar opens the system menu. The buttons placed in the right corner perform the following actions:

-  - minimize the HI process window
-  - maximize or  - restore down the HI process window
-  - close the HI process



### Related pages:

[HI environment](#)