

Menu Bar (Work with D2000 HI)

HI process environment - Menu bar

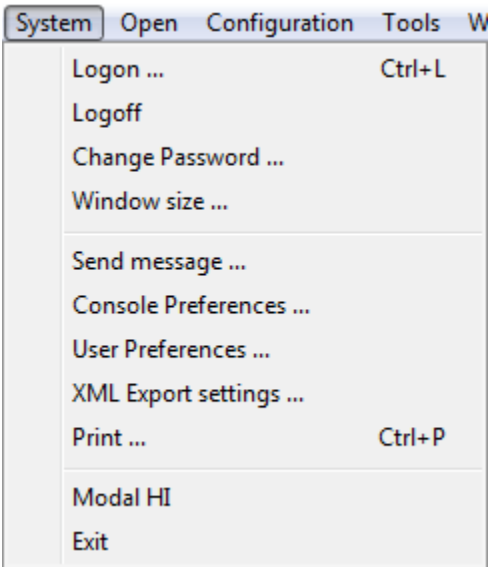
The Main menu bar can contain of the following menus:

- [System](#)
- [Open](#)
- [User menu](#)
- [Configuration](#)
- [Tools](#)
- [Window](#)
- [Help](#)

Presence and contents of the menus depend on the access rights of the user, on the configuration and status of the process [D2000 HI](#). All the basic menus are described in the text below.

System menu

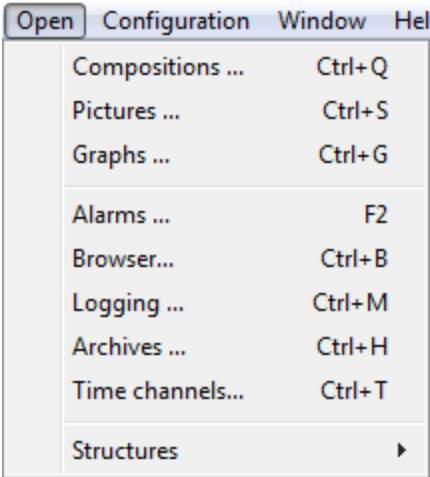
The **System** menu allows to log on/off an user, change password, printing and exiting the process [D2000 HI](#). It contains the following items: **Logon**, **Logoff**, **Change Password**, **Send Message**, **Settings**, **Print**, **Modal HI** and **Exit**.



Logon	Logon to operate with the process D2000 HI .
Logoff	Logoff after finishing your work with the process D2000 HI .
Change Password	Change user's logon password .
Window size	Setting a size of active window according to resolution .
Send Message	Send message to other consoles.
Console Preferences	Opens the Console Preferences dialog box to configure the HI settings for all users on given computer.
User Preferences	Opens the User Preferences dialog box to customize the HI settings for given user.
XML Export settings...	Settings for XML export of the objects.
Print	Print graphic information windows (pictures, graphs).
Modal HI	Enable / disable the modal mode of the process D2000 HI . If process D2000 HI is in the modal mode, you are not able to minimize and resize Hi process window and also switch to other applications. Modal HI allows to switch only to applications started as external tools .
Exit	Exit HI process .

Open menu

The **Open** menu is used to open graphic information windows, display alarms, the archive and log database. It contains the items: **Compositions**, **Pictures**, **Graphs**, **Reports**, **Alarms**, **Browser**, **Logging**, **Archives**, **Time channels** and **Structures**.



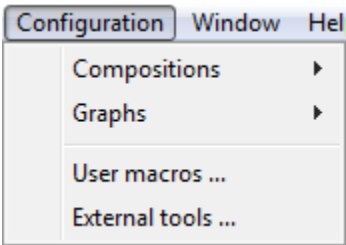
Compositions	Open a composition of graphic information windows.
Pictures	Open a picture .
Graphs	Open a graph .
Alarms	Open the list of alarms.
Browser	Open Browser.
Logging	Browse the log database.
Archives	Browse the archive of historical values.
Time Channels	Browse time channels.
Structures	Open a structured variable (Structured variables item) or database table (Database table item).

User menu

The **User** menu contents is given at user's configuration by the reference to an object of *HI menu* type which allows to open defined set of pictures, graphs and reports.

Configuration menu

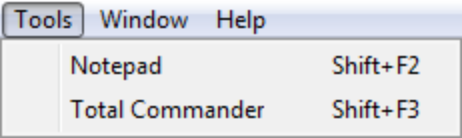
The **Configuration** menu is used to configure graphic information windows. The menu contains the following items: **Compositions**, **Graphs**, **User macros** and **External tools**.



Compositions	Create, edit and delete compositions of graphic information windows - the topic Configuration of compositions .
Graphs	Create, edit, and delete graphs - see the topic Graph configuration .
User Macros	Define, edit and delete user macros - see the topic Configuration of User macros .
External Tools	Define, edit and delete external tools - external applications started from the process D2000 HI - see the topic Configuration of External tools .

Tools menu

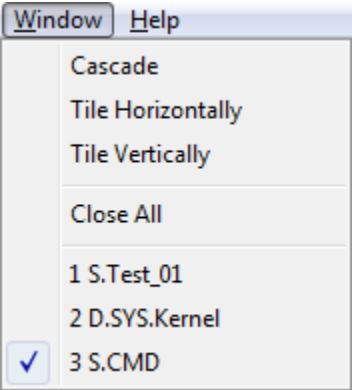
The menu is available only if at least one external tool with the **Also in menu** parameter checked has been defined. The **Tools** menu allows to start individual external tools. External tool - application is started by selecting from this menu or by keyboard shortcuts SHIFT+F1 to SHIFT+F8.



For more information see the topic [Configuration of External tools](#).

Window menu

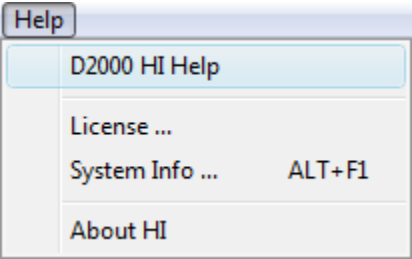
The **Windows** menu contains the items **Cascade**, **Tile Horizontally**, **Tile Vertically**, **Close All** and the list of windows opened on HI process desktop.



Cascade	All windows opened on the desktop of the process D2000 HI are automatically arranged in a cascade.
Tile Horizontally	All windows opened on the desktop of the process D2000 HI are automatically arranged horizontally.
Tile Vertically	All windows opened on the desktop of the process D2000 HI are automatically arranged vertically.
Close All	Close all windows opened on the desktop of the process D2000 HI (including dialog pictures).

Help menu

The **Help** menu contains the **D2000 HI Help**, **About HI** and **License** items. If a user has an administration rights, in the menu there is other item - **System information**. For other users this item is accessible through ALT+F1.



D2000 HI Help	Opens the on-line HI process Help.
System information	Opens the dialog box that contains the path to the logs of D2000 System processes.
About HI	Shows the D2000 HI info - version, release.
License	Shows the information about range and state of a license.



Related pages:

[HI environment](#)