

# User Preferences (Work with D2000 HI)

## User preferences

The user preferences allows users with sufficient access rights to customize the settings specified in the dialog box [Console Preferences](#) according to their needs.

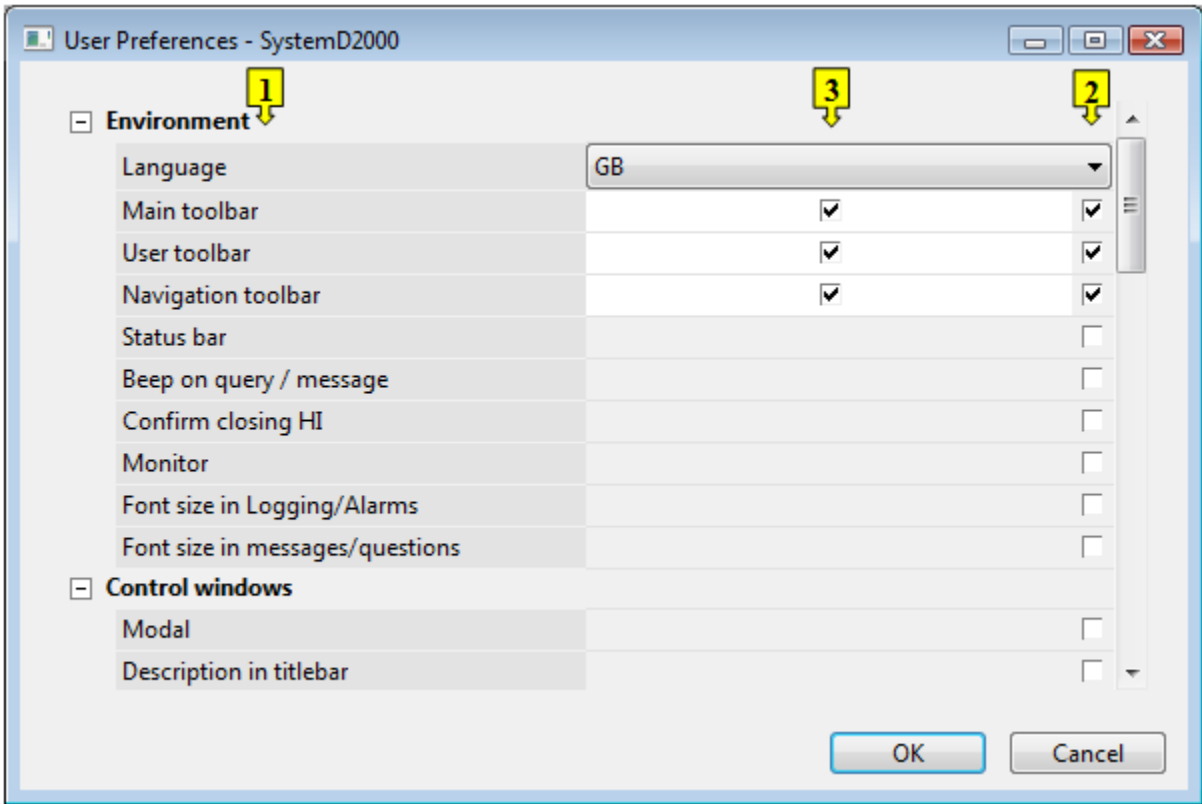
**!!! IMPORTANT !!!**

The preferences are to be valid just for the currently logged user and if they are specified, they are set over the console preferences and will be used every time the user is logged on.

**Notes:**

- User must have the respective rights to set the preferences.
- User can view and set just the preferences he/she has got the access rights to.

The user preferences are being configured through the dialog box **User Preferences - *user\_name*** (where *user\_name* is the name of currently logged user) opened by clicking the item **User Preferences...** from the menu [System](#).



The parameters contained in the dialog box are identical with the console parameters described in the chapter [Console properties](#). The dialog box can be divided into the following part:

1	Parameter (parameter group) name.
2	Checkbox to define given parameter. After a checkbox is enabled, the user can configure the respective parameter.
3	Parameter value.



**Related pages:**

[HI settings](#)