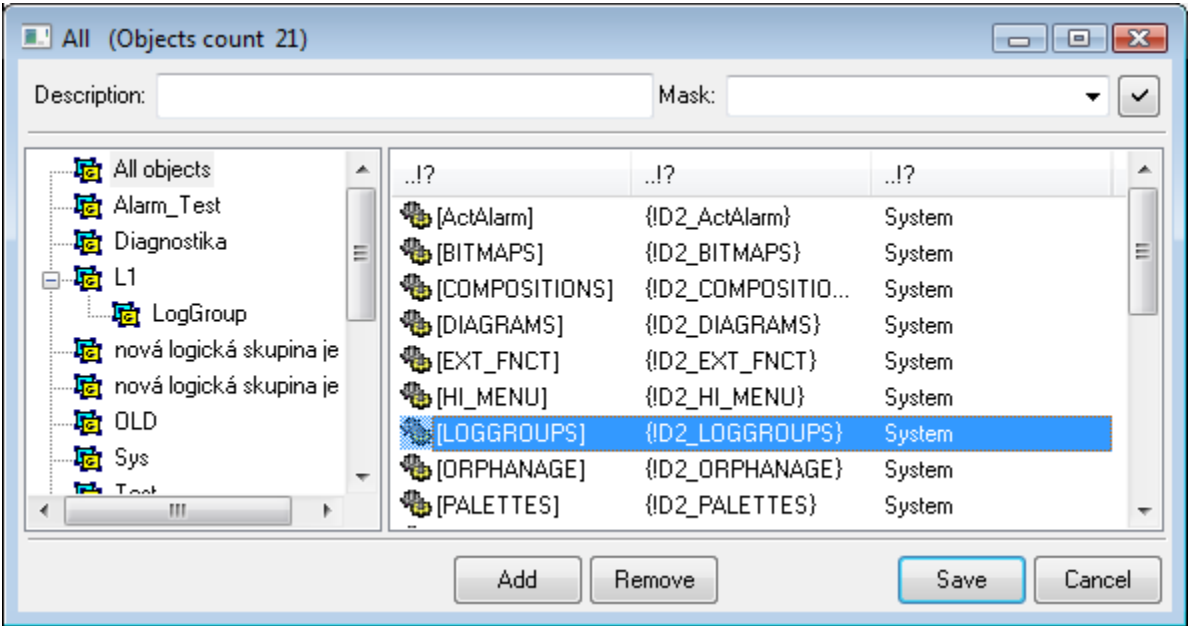


Configuration Dialog Box (D2000/Users and Access Rights /Object Groups)



Object group - configuration dialog box

Configuration of an object group is performed in the following window.



An object group is the list of other objects. In the left part of the window, there is a tree structure of logical groups in the system. The list of objects is in the right part and displays only the objects that are members of the selected group. If the group **All objects** are selected all objects are shown. The objects, names of which are enclosed between square brackets, are assigned to the group including their children (prospective children as well).

Add

Opens the [selection window](#) to assign objects to the group. The objects, that already are members of a group are grey-coloured. The object may be assigned to the group either individually , or together with their children .

Note: An object group may contain another object group (for example: If you add the object group *GrpB* along with their "children" into the object group *GrpA*, the object group *GrpA* will contain all the objects included in the object group *GrpB*).

Remove

The selected objects are to be removed from the group.



Related pages:

[Object groups](#)