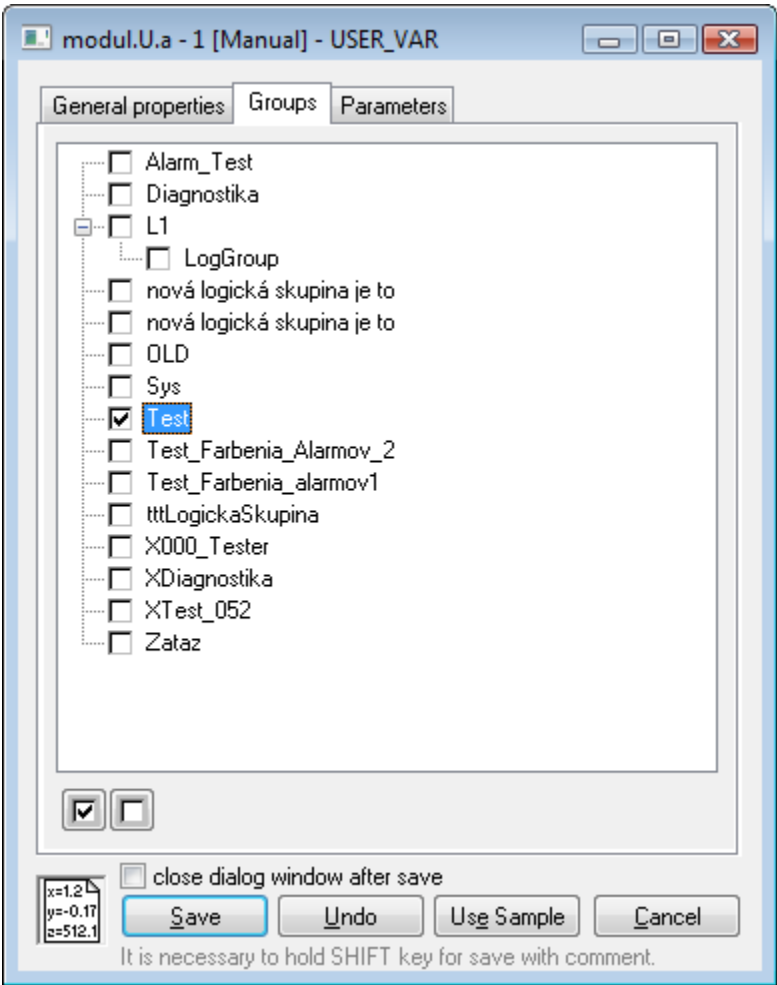


# Assign the Object to Logical Groups at its Configuration

## Assigning the object to logical groups at its configuration

An object may be assigned to logical groups during its configuration (the [D2000 CNF](#) process) through the tab **Groups**.



The tab contents is formed by the tree structure of all logical groups defined in the application. The symbol in front of the name of each group shows if a configured object is or is not a member of the particular group. It may be changed by left-clicking a particular symbol.

<input checked="" type="checkbox"/>	Includes the object in the selected group.
<input type="checkbox"/>	Excludes the object from the selected group.

After the object is saved, the D2000 system performs the changes you made.