

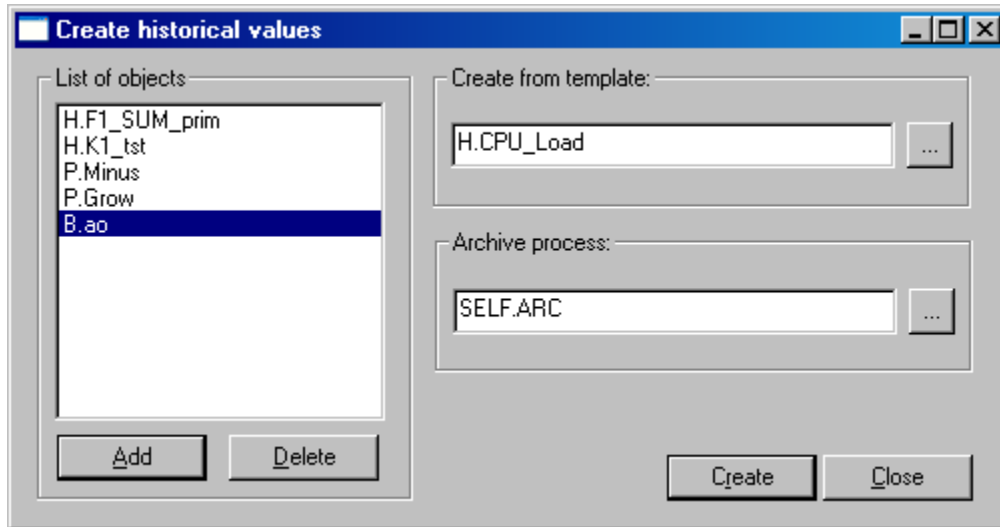
Creating Historical Values in Off-line Mode

Creating historical values in D2000 SysEdit

!!! WARNING: Process D2000 SysEdit is not supported from Version 7.2 and later !!!

The [D2000 SysEdit](#) process allows to create objects of the [Historical value](#) type for a defined archive according to a template object.

Creating historical values is performed in the dialog box opened after clicking **Into archive** item from the **Tools** menu.



Using the parameters defined in the dialog box shown above, the system will create archive objects according to the following rules:

- configuration parameters of the objects contained in the left list are obtained from the template object - **Create from template** option,
- as the parent of archive objects, which is the archive process (*.ARC), the archive specified in the **Archive process** option is used
- for each of the objects in the list placed in the left part of the dialog box an archive object is created, the name of which is:

`prefix_arch.obj_name.suffix_arch`

prefix_arch - prefix defined for objects of [Historical value](#) type,

obj_name - middle part of the name of the source object - object, for which the archive object is to be generated. An Exception is a case when the prefix of the previous object is #, i.e. parent name. Then the result archive object will also contain the parent name of the source object,

suffix_arch - suffix defined for objects of [Historical value](#) type.

Any object, which can be archived in the D2000 system, can be chosen into the left list. The list includes the following object types: [I/O tag](#), [Eval tag](#), [Line](#), [Station](#), [Process](#), [Alarm](#), [User variable](#), [System tag](#) and [Remote tag](#).