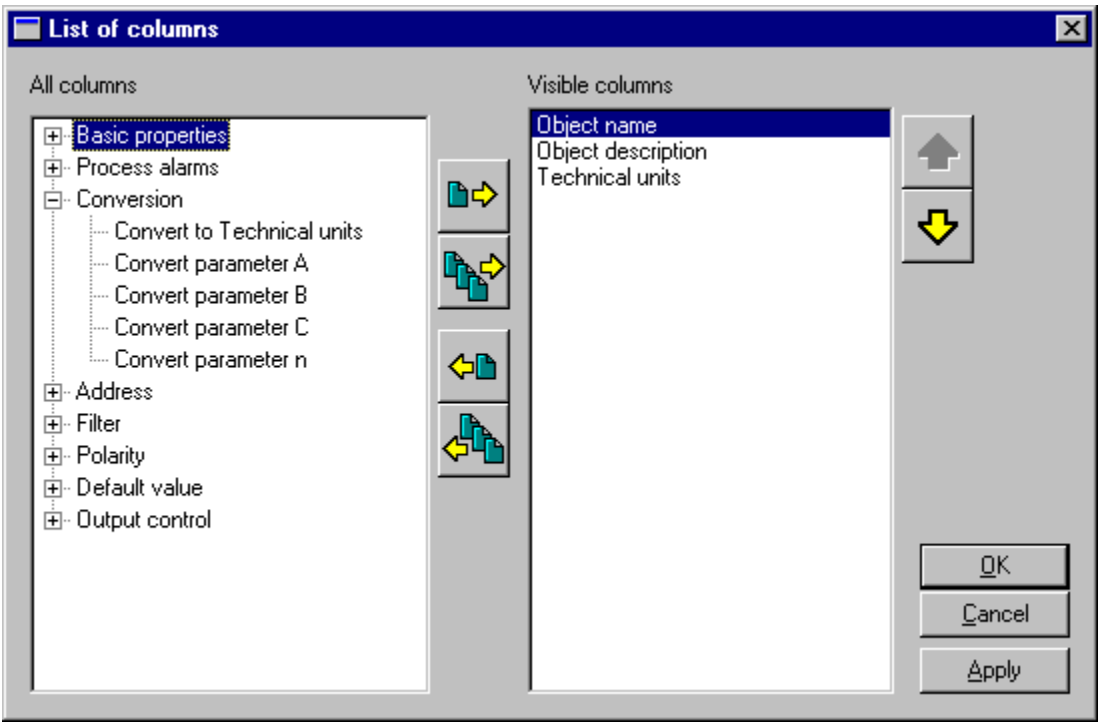


Configuration of table columns

The following dialog box is opened after clicking the item **Columns** from the pop-up menu. The box allows to adjust the table appearance - show / hide columns and their order.



	Move the highlighted column from the left list into the right list of visible columns.
	Move all columns from the left list into the right list of visible columns.
	Move the highlighted column from the right list into the left list of invisible columns.
	Move all columns from the right list into the left list of invisible columns.

Order of the right column list **Visible columns** determines the order of columns displayed in the dialog box displaying data from the log database. A column placed in the first place will be displayed as the first one from the left, the second column will be the second one from the left, etc.

	Move the highlighted column in the right list to the previous position – one position up.
	Move the highlighted column in the right list to the following position – one position down.

Related pages:
[Selection window](#)