

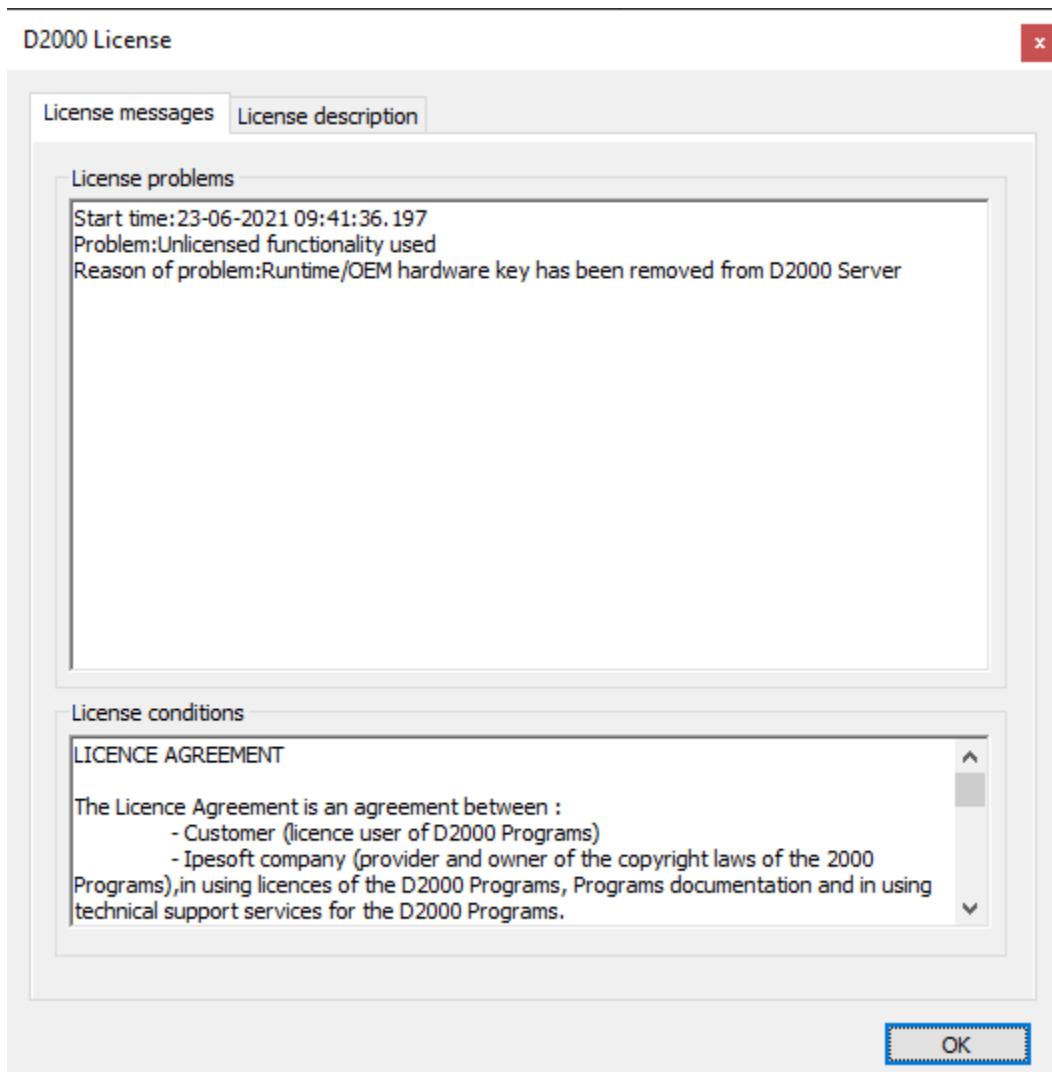
Breach of license agreement

The breach of license agreement occurs if a user of the D2000 application with the valid license but also the user of D2000 Demo oversteps the [license range](#), which he purchased, uses the features that are not included in his license, or the validity of license expired.

The following situations are considered to be beyond the license range:

- [Runtime/OEM hardware key](#) has been removed from D2000 Server
- [Runtime/OEM hardware key](#) has been changed on D2000 Server
- More D2000 consoles than the license permits are logged
- A user is logged on two or more D2000 consoles (only for [Named Device](#) model)
- Exceeding of number of licensed thin clients (Web applications) that are logged in the given time
- The License is time-limited and has expired
- Exceeded number of tags
- Exceeded number of archival tags
- The number of running D2000 Archiv processes exceeds the limit
- The number of running D2000 KOM processes exceeds the limit
- The number of running D2000 Event processes exceeds the limit
- The number of running D2000 Calc processes exceeds the limit
- The number of running D2000 Gateway processes exceeds the limit
- The number of running D2000 DBManager processes exceeds the limit
- The number of running D2000 Topology processes exceeds the limit
- The number of running D2000 Switch processes exceeds the limit
- The number of running D2000 OPC Server processes exceeds the limit
- The number of running D2000 Alarm processes exceeds the limit
- The number of running EDA Server processes exceeds the limit
- The number of running JAPI Static Session processes exceeds the limit
- The number of running JAPI Dynamic Session processes exceeds the limit
- The number of running SGCom processes exceeds the limit
- The number of running SmartWeb REST processes exceeds the limit
- There are more EDA clients connected than the license permits
- There are more SmartWeb connected clients than the license permits
- The number of running D2000 Server processes in redundancy exceeds the limit
- D2000 Archiv does not run on the same workstation as the D2000 Server
- D2000 Event does not run on the same workstation as the D2000 Server
- D2000 Calc does not run on the same workstation as the D2000 Server
- D2000 Alarm does not run on the same work station as the D2000 Server
- D2000 DBManager is not licensed to use the Oracle OCI interface
- The number of databases or tables, used by D2000 DBManager, exceeds the limit
- D2000 Archiv uses the functionality of performance-optimizing which is unlicensed
- D2000 KOM cannot run in backup (instance) mode
- D2000 Archiv cannot run in backup (instance) mode
- D2000 process cannot set the limitation of used CPU core (affinity)

When exceeding the license range, this dialog window shows on the screen of each user of the D2000 System:



If the license has been breached for several reasons, all notices are displayed.

If the license has been breached by mistake, after urgent repair of this state, the situation returns to normal. If D2000 System runs non-stop in the state which breaches the license range, the above-mentioned window is displayed to all users regularly.

You can find the information about the license range and its current state in the dialog window **D2000 License**, the item **License description** (the menu **H elp -> License**).

License description

License descriptions

	Scope of license	Current status
Product	ENTERPRISE CORE	
License expiration	Unlimited	
Version	12.2	
OEM partner	Ipesoft	
Customer	Ipesoft	
Application	Ipesoft application	
[-] License model		
Named devices	Unlimited	1
Number of thin clients	0	1
Number of tags	Unlimited	22
Number of archive objects	Unlimited	25
[+] Number of system processes		
JAPI dynamic session	Unlimited	0
JAPI static session	Unlimited	0
SGCom	Unlimited	0
SmartWeb REST	PARALLEL	0
SmartWeb clients	Unlimited	0
iToken HW key required	No	
CNF key required	No	
High performance archive	Yes	
Permitted EDA thick clients	Yes	
Test license	No	
D2000 Cores count	Unlimited	
EDA Server Cores count	Unlimited	
EDA Server Basic	No	
DBM Performance Pack	Yes	
ESL Performance Pack	Yes	
XML Config API	Yes	

OK



Related pages:

[Licensing the D2000 products](#)