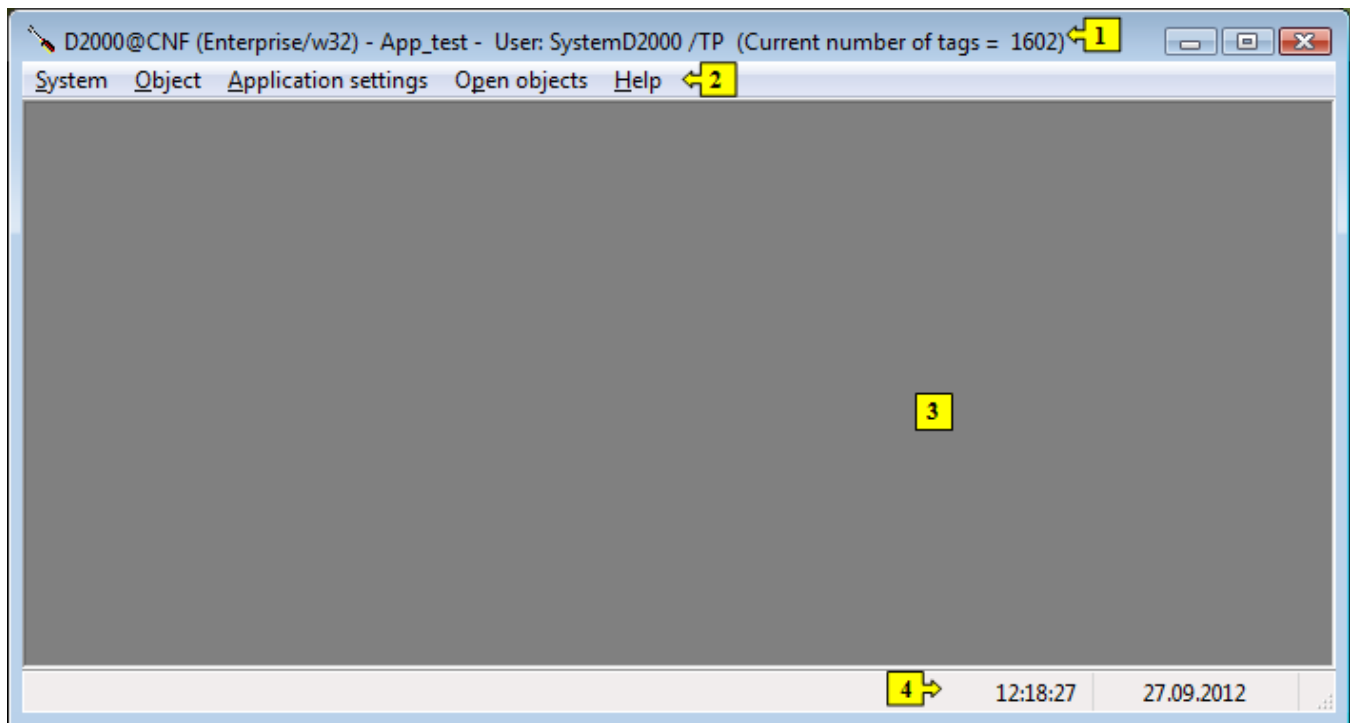


CNF Environment

D2000 CNF environment

The following window is displayed after starting process [D2000 CNF](#).



The environment of process [D2000 CNF](#) comprises of the following basic parts:

- [window title bar](#) - part 1
- [menu bar](#) - part 2
- [desktop](#) - part 3
- [status bar](#) - part 4

Note:

After the process **D2000 CNF** has been started, the [selection window](#) for editable objects is open automatically (the window may be also open by clicking the **Editable objects** item in the [Objects](#) menu).



Related pages:

[D2000 CNF](#)