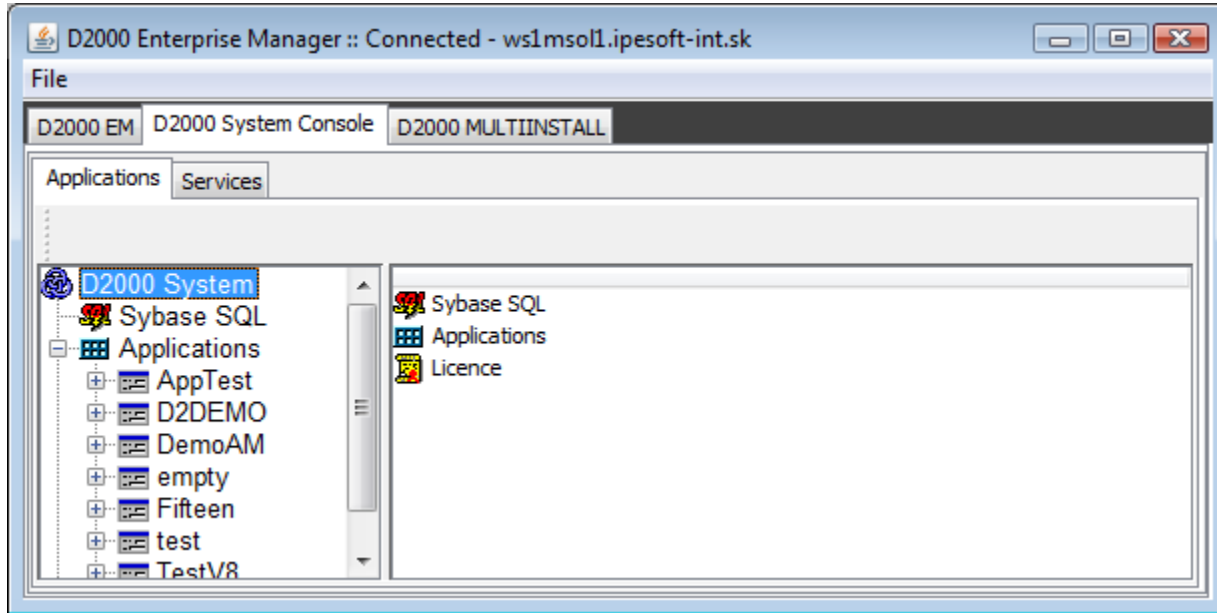


# Application manager module

## D2000 Application Manager module

**D2000 System** enables to install several applications of a given version on a single computer.

**D2000 Application Manager** module is used to manage the applications (tab [Applications](#)) and the services controlled by the *startcli* process (tab [Services](#)). An application manager needs for its function to log on to the operating system with an *administrator rights*.



If **D2000 Application Manager** is used through the Remote Desktop, we recommend to use a remote access for the purpose of the administration (mstsc.exe /admin).

In case the user has no a special access rights, set in OS Windows, he can do only the [limited actions](#) related to **D2000 Application Manager** module.

## Applications

The submodule **Applications** allows:

- [database server management](#)
- [D2000 System application management](#)
- [overview of the Licence options](#)

## Services

A submodule **Services** allows:

- [service management](#)



**Related pages:**

[D2000 Enterprise Manager \(D2EM\)](#)