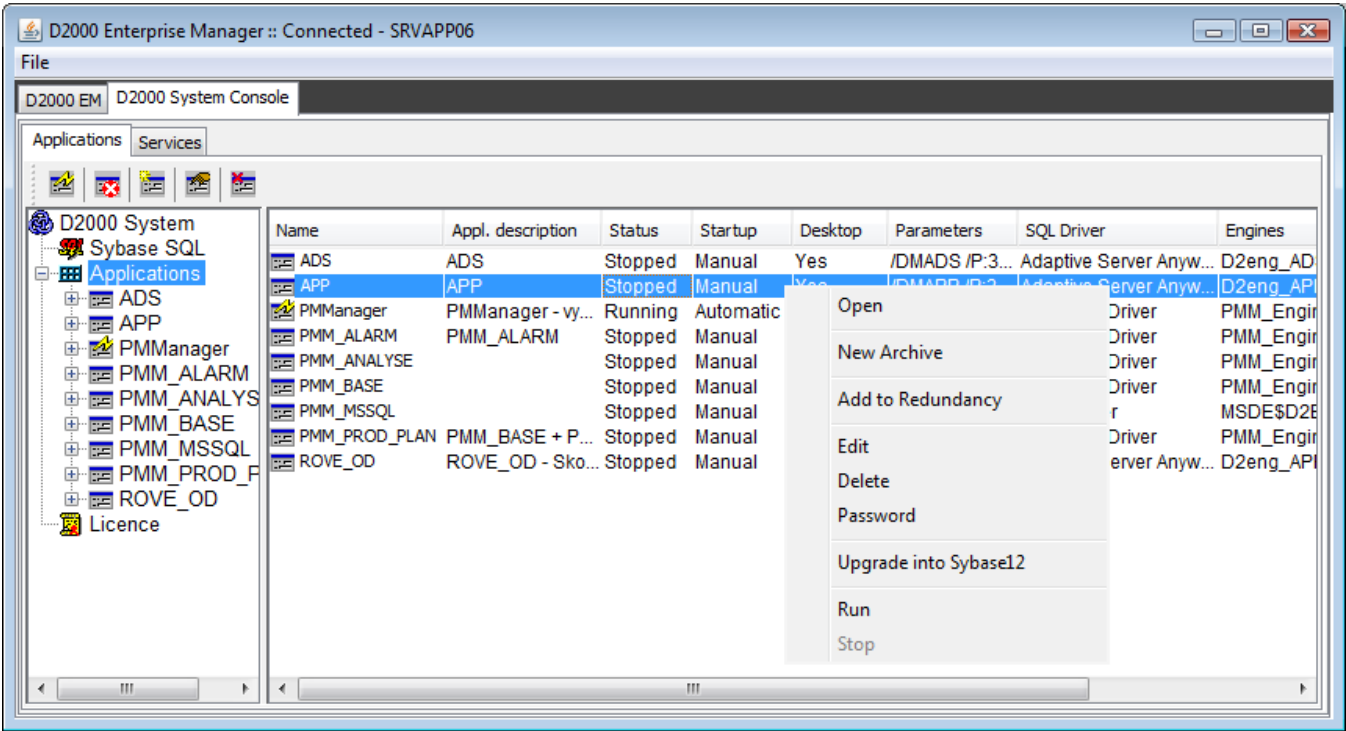


Application Management

Management of D2000 system applications

The possibilities of the application management of D2000 system:

- [Creating a new application](#)
- [Modifying the selected application](#)
- Starting the application
- Stopping the application
- Deleting the application
- [Creating a new archive](#)
- [Editing an existing archive](#)
- [Setting the parameters for D2000 Server](#)
- [Setting the parameters for the archive](#)
- [Upgrade of application to D2000 v9.1](#)



Selecting the item **Applications** shows a list of applications configured on the computer in the right part of the dialog box. Meaning of the individual parameters is as follows:

Name	Application name
Appl. description	Application description.
Status	Application status (Stopped, Running, Pending...)
Startup	Application service start-up method
Desktop	If Yes, the process D2Start and D2000 Server will be displayed on the desktop
Parameters	List o parameters, that are to be sent to the process Server during the application start
Sql Driver	Driver for database handling
Engines	List of servers, that are required for the application run and their functionality will be logged by the process D2Start

Note: Starter of applications is the process D2Start, that watches the run of the process\ [D2000 Server](#) and Database servers. If **D2Start** detects that the process [D2000 Server](#) is terminated, then attempts to run it again.

Database support

The support of Sybase database platform has been changed since D2000 System version 9.1. For access to the **application databases** (both a log and configuration database) there is used Sybase 12. **Archive database** is still accessible via Sybase 6, 7, 9, 12. Other database platforms are supported without changes. The table below shows current status.

Database	Database file	Supported database platform
Configuration	Syscfg.db	Sybase 12 Oracle MS SQL
Log	LogFile.db	Sybase 12 Oracle MS SQL
Archive	Archiv.db	Sybase 6 Sybase 7 Sybase 9 Sybase 12 Oracle MS SQL PostgreSQL

Since **D2000 System v9.1** you must convert databases to Sybase 12 in all applications that run on unsupported Sybase platform. The configuration and log database must be converted to Sybase 12. The conversion of archive database is optional as the support of lower Sybase versions is kept because of backward compatibility.

You can convert the databases on Sybase platform in the module **D2000 Application Manager** ([Upgrade of application to D2000 v9.1](#) (ASA 12)). It can take a longer time in dependence on quantity and size of databases. Therefore, in some situations, there is better to replace the database by a new empty template (except for the configuration database).



Related pages:

[Parameters for D2000 Server](#)

[Database check after "hard" system failure](#)