

# Service management

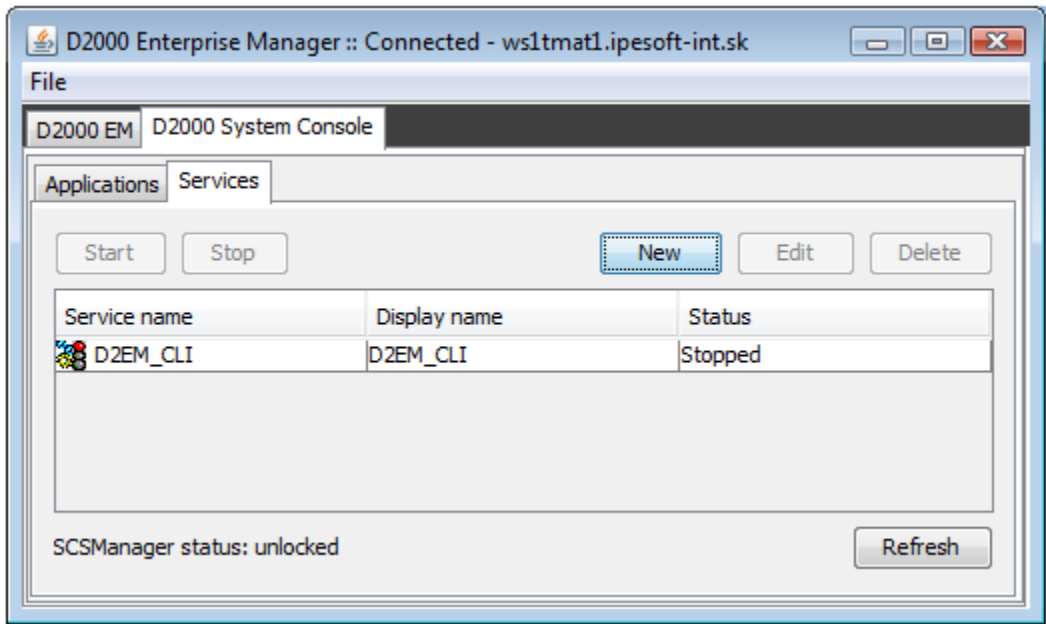
A submodule **Services** is used to create and manage a [StartCli](#) utility and D2000 System process which is monitored by **StartCli** utility.

Start it by clicking on the *scsconfig.exe* file placed in the **Bin** subdirectory of the [installation directory](#).

- [Submodule description](#)
- [Create new service](#)
- [Edit service](#)
- [Start service](#)
- [Stop service](#)
- [Delete service](#)

## Submodule description

The submodule **Services** is an application working in the Windows environment. Start the *scsconfig.exe* file and the following dialog window opens:



In the dialog window there is the list of services which are monitored by **StartCli** utility. You can:

- [create new service](#)
- [edit the parameters of existing service](#)
- [start service](#)
- [stop service](#)
- [delete service](#)

In the bottom of the dialog window there is displayed the status of the Windows application **Service Manager**. Possible states:

- *Unlocked*
- *Locked*

Clicking on **F5** function key refreshes the list of services.

## Create new service

In the tab **Services** choose the item **New**. The following dialog window opens:

The image shows a Windows Service Configuration dialog box with two tabs: "WD Service" and "D2000 Service".

**WD Service Tab:**

- Service name: D2000\_WD\_Calc2
- Display name: D2000\_WD\_Calc2
- FilePath: G:\D2000\D2000.EXE\bin\startcli.exe
- Startup type: Automatic
- Frequency: [Empty]
- Init Frequency: [Empty]
- Local System Account (selected)
  - ☐ Allow service to interact with desktop
- This Account: [Empty]
  - Password: [Empty]
  - Confirm: [Empty]

**D2000 Service Tab:**

- Service name: D2000\_Calc2
- Display name: D2000\_Calc2
- FilePath: G:\D2000\D2000.EXE\ [Browse button]
- D2000 params: [Empty]
- Local System Account (selected)
  - ☐ Allow service to interact with desktop
- This Account: [Empty]
  - Password: [Empty]
  - Confirm: [Empty]

Buttons: OK, Cancel

## WD Service

### Service name

Service name. Required parameter.

### Display name

Name that will be shown in the **Service Manager**. Required parameter.

### File path

A path to *startcli.exe*.

### Start up type

Service starting up type:

- *Automatic* - starts the service automatically during the Windows starting up
- *Manual* - starts the service manually (by user)
- *Disabled* - service starting up is disabled

### Frequency

The */F* parameter of the utility [StartCli](#).

### Init Frequency

The */T* parameter of the utility [StartCli](#).

### Local System Account

The service runs in the background under the system account.

### Allow service to interact with desktop

A possibility of interaction with user.

## This Account

The service runs under the user account.

## D2000 Service

### Service name

Service name. Required parameter.

### Display name

Name that will be shown in the **Service Manager**. Required parameter.

### File path

Path to an executable file of D2000 System process. Required parameter.

### D2000 params

[Start parameters](#) of process. Their use depends on the monitored process.

## Local System Account

The service runs in the background under the system account.

## Allow service to interact with desktop

A possibility of interaction with user.

## This Account

The service runs under the user account.

**Note:** When you define the parameter **This Account**, the parameter **Password** must be defined (an empty string is not allowed).

## Edit service

---

In the tab **Services** select the service and click on **Edit** button. The rules are the same as it is when user [creates the new service](#).

### WARNING

The parameter **Service name** cannot be modified.

## Start service

---

In the tab **Services** select the service and click on **Start** button.

## Stop service

---

In the tab **Services** select the service and click on **Stop** button.

## Delete service

---

In the tab **Services** select the service and click on **Delete** button.



Related pages:

[D2000 System utilities](#)