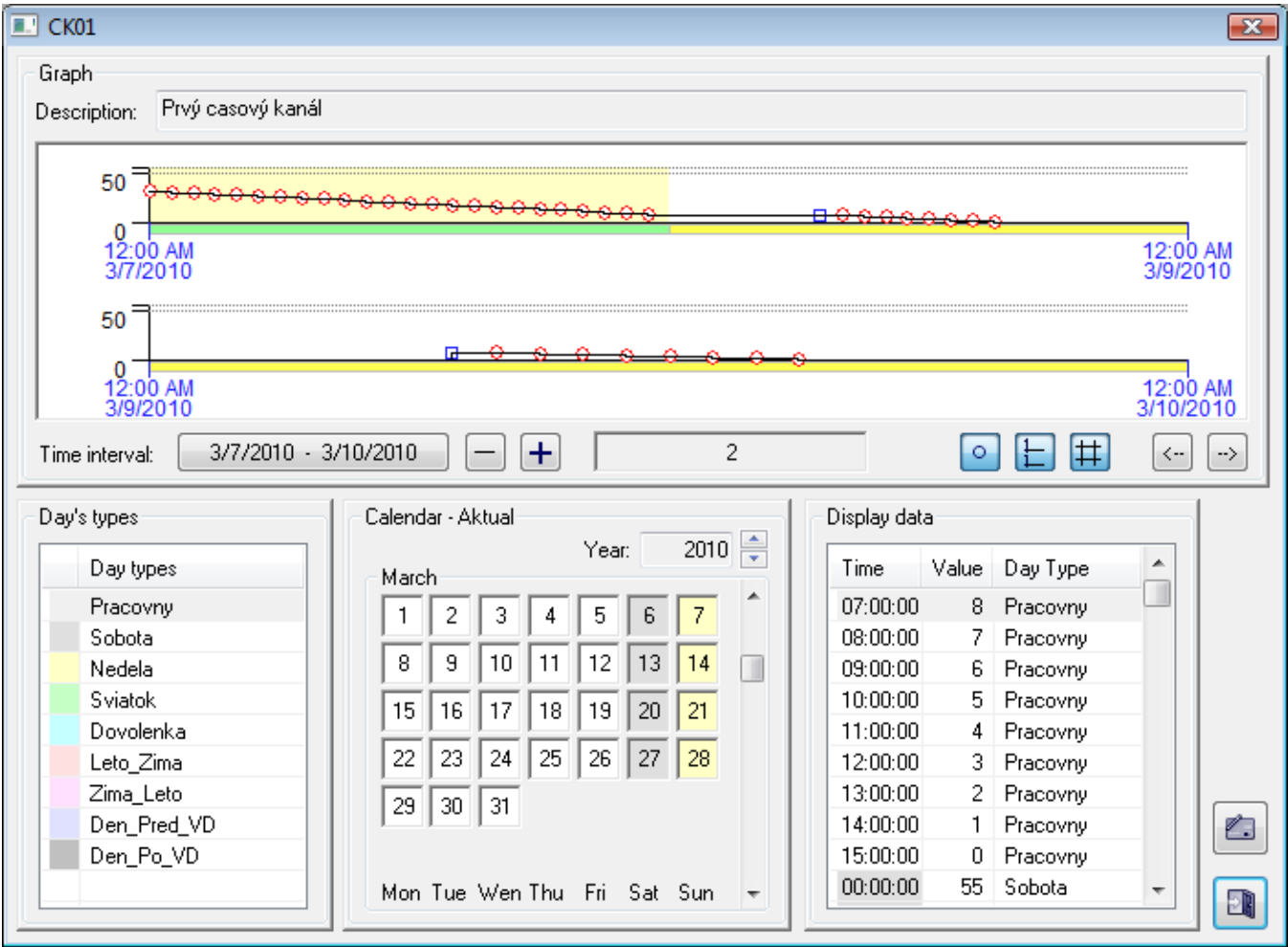


Graphic Representation of the Time Channel Data Flow (HI)

Graphic representation of the time channel data flow

Graphic representation of time channel data flow shows a data flow of the time channel and corresponding controls. Representation area consists of the time and value axis, background color corresponding to displayed type of day and graphic flow of time channel data applied to displayed time interval.

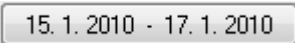


The color of the mouse cursor hovering over an important point of graph turns yellow and the point definition (time, value and day type) is displayed. A mouse-click performs selecting this definition in the table of displayed time channel data and the corresponding points are selected in the graph. Displaying of particular parts depends on the user's needs.






The window consists of the following parts:



- **Graphic representation** - it displays the graphic data flow of the time channel within given time interval. It allows to define a time interval and to set the drawing parameters. The current value of the time channel is shown in the middle of the bottom part of "Graphic representation" part.
- **Day type** - the table of defined day types with a definition of colors used in the representation.
- **Calendar** - it shows configuration data of the displayed calendar.
- **Displayed data** - the table shows the data definition of the time channel. Selecting the corresponding lines in the table highlights the points corresponding to this selection (a square marks will be drawn around these points). This feature can be also used in reverse. Clicking on a point displaying the flow change performs the table selection and all the corresponding points are selected in the graph.
- **Edit buttons** - the buttons are only displayed in the edit mode (see the topic [Edit time channel data](#)).

Control buttons allow the following options:

	Allows to select the time interval to show time channel data.
	Shrinks / extends the displayed time interval - 1 day to both sides of the time interval.
	Shows definition points in the representation.

	Doubles the drawing flow.
	Shows / hides the grid.
	Moves the displayed time interval 1 day backward / forward.

Dialog box also contains the following buttons:

	Allows to edit time channel data. Button will be displayed only if the user has the access rights to edit the time channel data.
	Closes the dialog box.



Related pages:

[Time channels](#)