

SCS Config

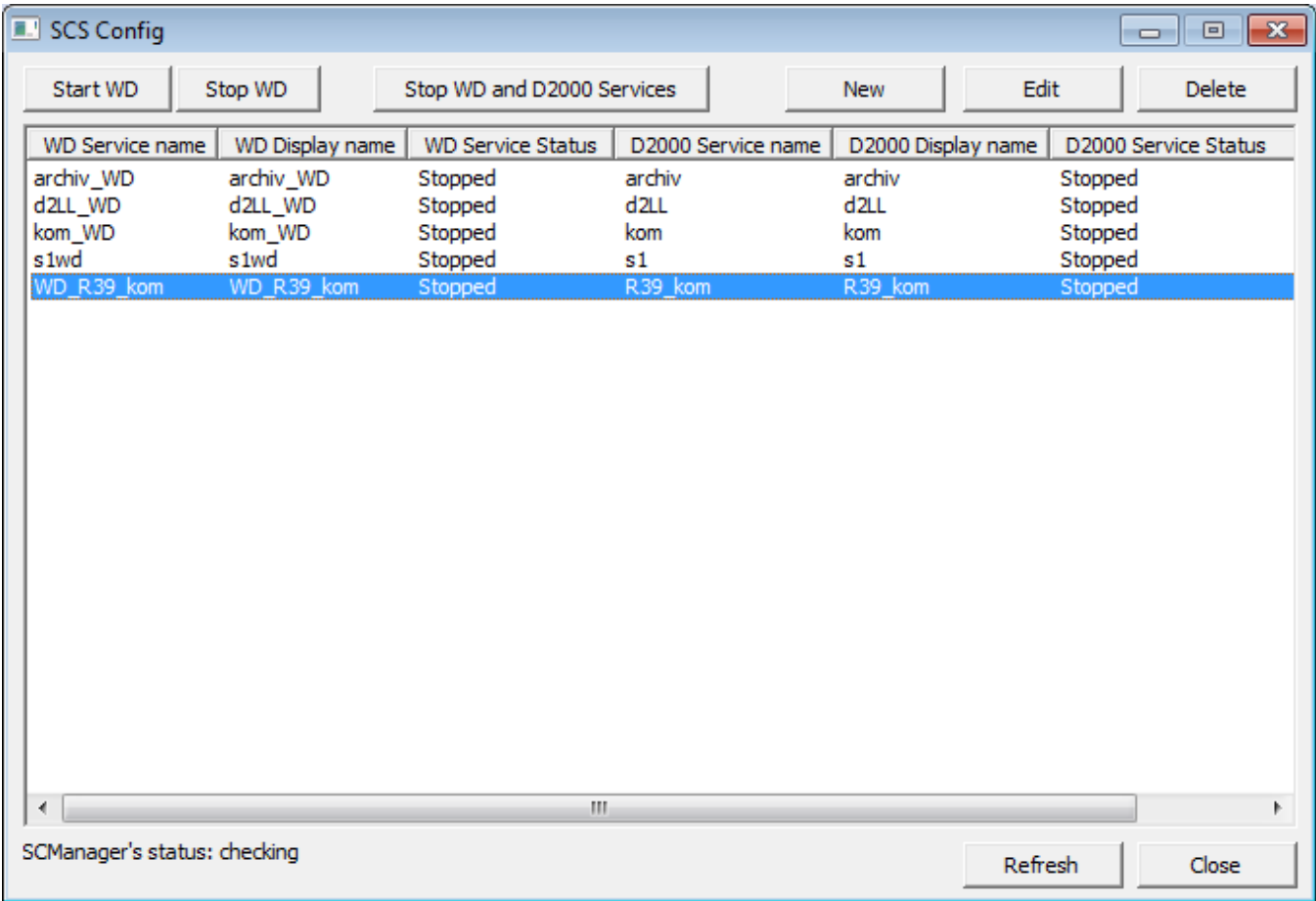
The utility **SCS Config** allows to create and manage a pair of services - the utility **StartCli** and a D2000 system process monitored by the utility **StartCli**.

To start the utility **SCS Config** , run the file *scsconfig.exe* located in the subdirectory **Bin** of the [installation directory](#).

- Utility description
- [Creating a new service](#)
- [Editing a service](#)
- [Starting a service](#)
- [Stopping a service](#)
- [Selecting a service](#)

Utility description

The utility **SCS Config** is a Windows application. Starting the file *scsconfig.exe* opens the following window:



The window contains a list of services monitored by the utility **Startcli**. The window allows users to:

- [create a new service](#)
- [edit the parameters of an existing service](#)
- [run a service](#)
- [stop a service](#)
- [delete a service](#)

The window also displays an information of the status of the **Service Manager** application - service database manager. Possible states:

- *UnLock* - unlocked
- *Lock* - locked

Pressing the key **F5** refreshes the list of services.

Creating a new service

Selecting the item **New** from the menu **System** in the **SCS Config** window opens the following window:

The image shows a Windows-style dialog box titled "SCS Config - Configuration dialog". It has a close button (X) in the top right corner. The dialog is divided into two main sections: "WD Service" on the left and "D2000 Service" on the right. At the top, there is a "Computer:" field with the value "WS1GOND1". In the "WD Service" section, there are fields for "Service name:" (WD_alarm), "Display name:" (WD_alarm), and "File path:" (D:\D2000\D2000.EXE\bin\startcli.exe). Below these is a "Startup type:" dropdown menu set to "Automatic", and two input fields for "Frequency:" (20) and "Init Frequency:" (5). There are two radio button options: "Local System Account" (selected) and "This Account" (unselected). Under "Local System Account" is a checkbox "Allow service to interact with desktop" which is unchecked. Under "This Account" are fields for "Password:" and "Confirm:". In the "D2000 Service" section, there is a checkbox "Existing service" which is unchecked. It has fields for "Service name:" (D2000_alarm), "Display name:" (D2000_alarm), and "File path:" (D:\D2000\D2000.EXE\bin\Alarm.exe). Below the file path is a "Browse" button. There is also a "D2000 params:" field. Similar to the WD Service section, it has radio buttons for "Local System Account" (selected) and "This Account" (unselected), with an unchecked "Allow service to interact with desktop" checkbox and password fields. At the bottom right, there are "Create" and "Cancel" buttons.

Computer

Computer name.

Existing service

Parameter is accessible only when a new WD Service is being created for an existing D2000 Service.

WD Service

Service name

Service name. Required parameter.

Display name

Name that will be displayed in the **Service Manager**. Required parameter.

File path

Full path to the *startcli.exe* file.

Startup type

Service startup type:

- *Automatic* - runs the service automatically during the Windows startup
- *Manual* - the service will be started manually (by user)
- *Disabled* - starting the service is disabled

Frequency

The **/F** parameter of the utility [StartCli](#).

Init Frequency

The **/T** parameter of the utility [StartCli](#).

Local System Account

Specifies that the service is logs on to the system account.

Allow service to interact with desktop

Possibility of interaction with user.

This Account

Allows to assign the service to an account.

D2000 Service

Service name

Service name. Required parameter.

Display name

Name that will be displayed in the **Service Manager**. Required parameter.

File path

Full path to a D2000 system executable file. Required parameter.

D2000 params

[Start parameters](#) of defined process. Use of the parameters depends on the process.

Local System Account

Specifies that the service is logs on to the system account.

Allow service to interact with desktop

Possibility of interaction with user.

This Account

Allows to assign the service to an account.

Note: When you assign the service to the account, you have to define the parameter **Password** (cannot be an empty string).

Editing a service

Select required service in the **SCS Config** window and click the button **Edit**. There are the same rules for editing as described in [creating a new service](#).

WARNING

The parameter **Service name** cannot be modified at all.

Starting a service

Select required service in the **SCS Config** window and click the button **Start WD**.

Stopping a service

Select required service in the **SCS Config** window and click the button:

- **Stop WD** - if you want to stop only the monitoring service ([StartCli utility](#)). D2000 process will not be stopped.
- **Stop WD and D2000 Services** - if you want to stop both the monitoring service ([StartCli utilita](#)) and D2000 service. Then, D2000 service will be stopped too.

Deleting a service

Select required service in the **SCS Config** window and click the button **Delete**.



Related pages:

[D2000 system utilities](#)