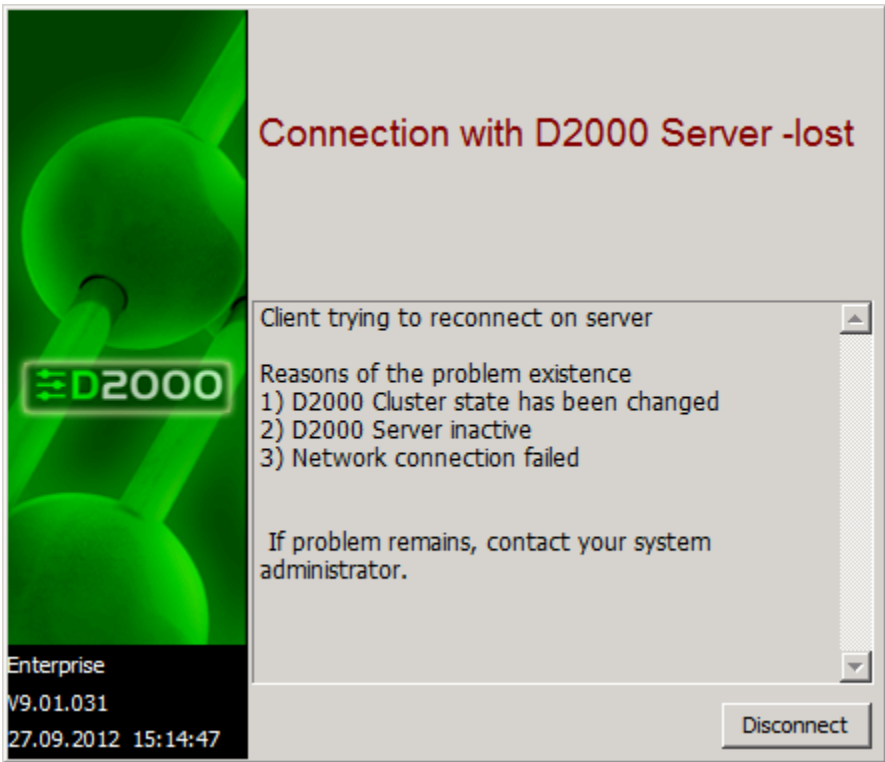


# HI in Redundant Systems (HI)

## HI in redundant systems

For many of the modern systems, there is typical and sometimes necessary 24-hour operation for 365 days a year. Ensuring such an operation is not easy at all. In light of the facts, that each equipment has a certain operating life and failure rate, it is necessary to fix the factors. One of the possibilities is use of redundancy. Redundant systems are designed by means of several copies of the same equipment (e.g. logical network or software module). Using redundancy increases the operational reliability of the system. Conventional representation of redundant system is one work system and another system (s), which is (are) ready for a failure of the work system and then starts to operate instead of the work system.

Behaviour of process **D2000 HI** in redundant systems is a little different from one server behaviour. In these systems, process **D2000 HI** is not terminated after disconnecting the active server (e.g. switchover to backup server), but there is displayed the following window:



and the process **D2000 HI** is waiting for recovering the connection.

To ensure the new functional properties of the process **D2000 HI**, you must run it using the following parameters:

Parameter	Meaning
/RDredundant_group_name	Using the parameter allows the client connecting the active (hot) server within given redundant group. The active server is detected by means of multicast TCP/IP network messages.
/RFredundant_group_name	Using the parameter allows the client to connect the active (hot) server within given redundant group. The active server is searched from the list of servers defined in the system registry. It is intended for connecting D2000 clients placed behind routers, which do not send multicast network messages (see the parameter /RD).

The indicator placed in the [status bar](#) signalizes the status of the connection to the active server through individual lines. The status is indicated by a color and text displayed when you point the mouse pointer to the indicator. All possible states are described in the [table](#).

## HI after reconnecting the server

When the connection with the server is re-established, pictures, graphs and reports that were opened before loosing the connection are automatically reopened as follows:

- visible pictures with the parameter **Reopen in RD** checked in their configurations,
- invisible pictures with the parameters **Reopen in RD** and **Invisible** checked in their configurations,
- graphs (excluding [dynamic graphs](#)),
- reports.



**Related pages:**

[HI settings](#)