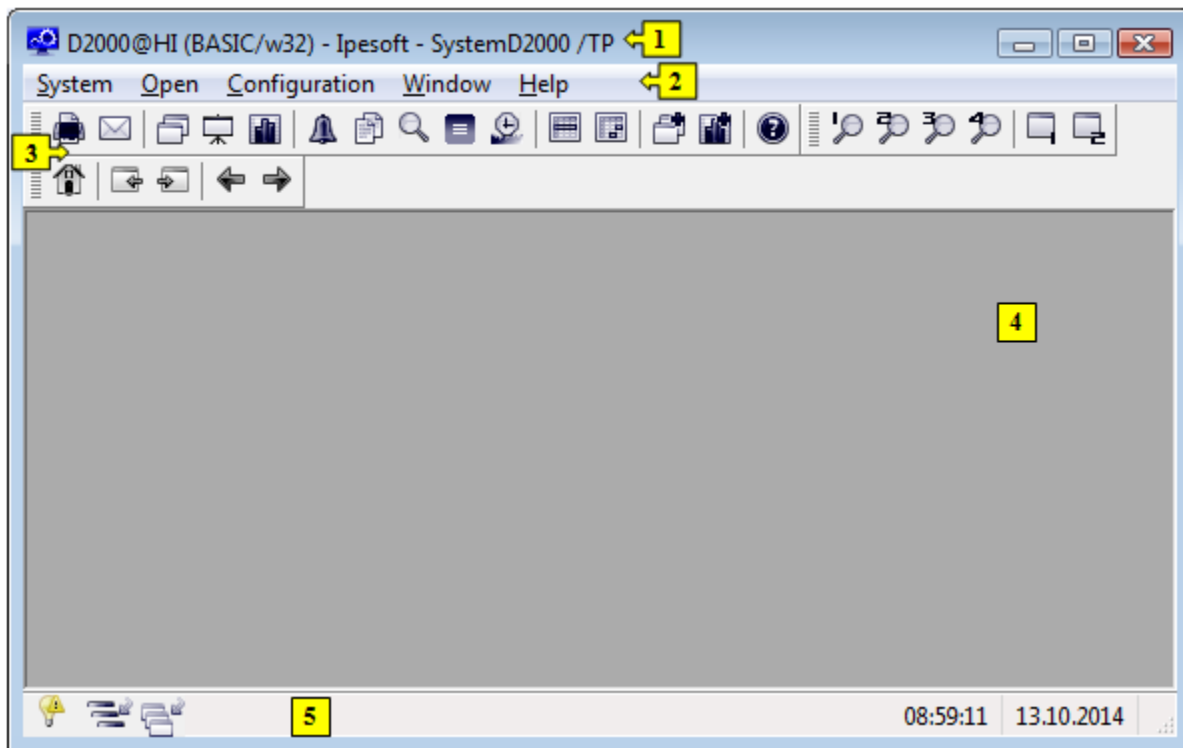


HI Environment (HI)

HI process - Environment

The following window appears on the monitor after starting process [D2000 HI](#).



HI environment consists of the following basic parts:

- [Title bar](#) - part 1,
- [Menu bar](#) - part 2,
- [Toolbars](#) - parts 3 and 4,
- [Desktop](#) - part 5,
- [Status bar](#) - part 6.