

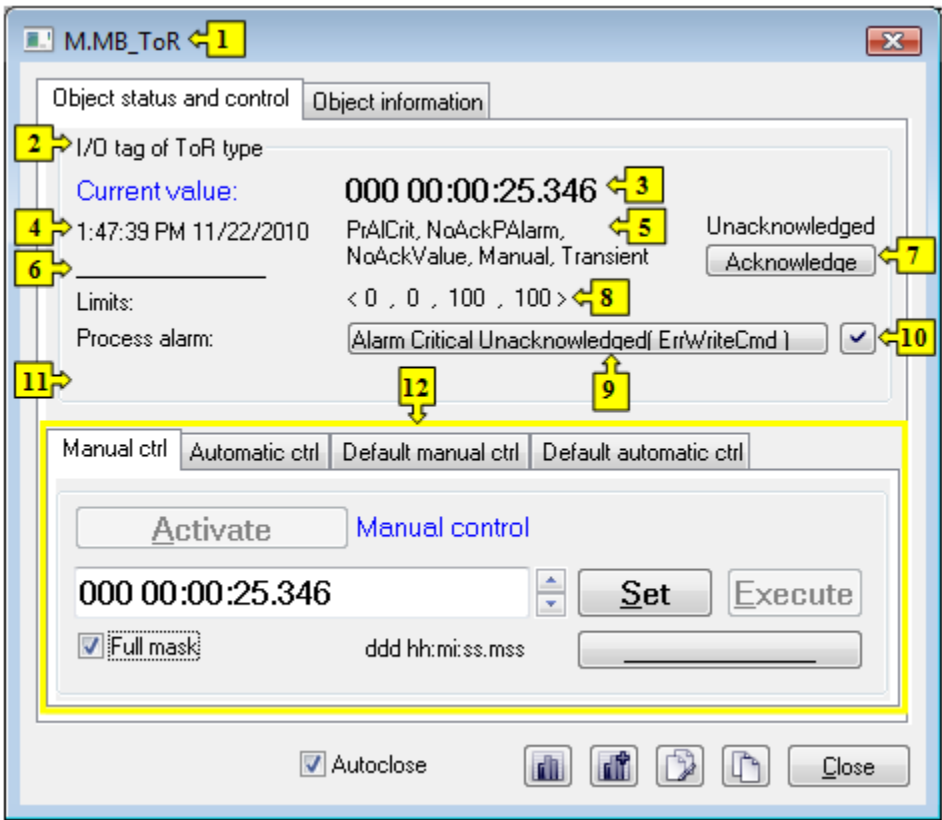
# Control the Time Interval Objects - Output (ToR) (D2000 /Work with D2000 HI/Monitoring and Controlling of D2000 System Objects)

## Controlling time interval outputs (ToR)

Clicking a graphic object with an I/O Tag of *ToR* (Time interval - output) type connected to control (the user has sufficient access rights) opens the control window that consists of two tabs:

[Object status and control](#)  
[Object information](#)

### Object status and control



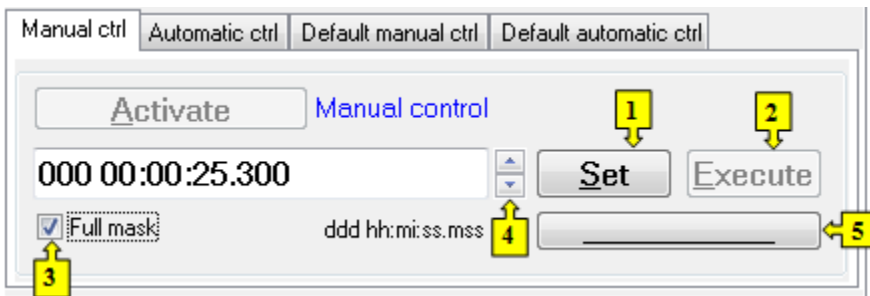
1	Object name.
2	Object description.
3	Current value of the object. <b>Note:</b> If the object is in the <i>Default value</i> state (see the tabs <a href="#">Default manual ctrl</a> or <a href="#">Default automatic ctrl</a> ), there is displayed the text <b>Default value</b> instead of <b>Current value</b> .
4	Value time.
5	<a href="#">Object states</a> .
6	Object value flags (user attributes). There are shown the flags, the value of which is TRUE.
7	Acknowledges the object value.
8	Limits defined for the object: <VLL, LL, HL, VHL>. VLL - Very Low Limit (the lowest limit) LL - Low Limit HL - High Limit VHL - Very High Limit (the highest limit)
9	Opens the <a href="#">dialog box to control the current process alarm</a> .

10	Acknowledges given process alarm.
11	Telemetric value of the object. <b>Note:</b> Value is shown if the object is in the <i>Default value</i> state (see the tabs <a href="#">Default manual ctrl</a> or <a href="#">Default automatic ctrl</a> ).
12	Part of the control window for <a href="#">controlling the output and default value</a> .
13	Opens a <a href="#">dynamic graph</a> of the object.
14	Inserts the object into the current page of the <a href="#">Browser</a> if opened. If it is not opened, clicking the button opens it and inserts the object into the first page of the Browser.
15	Copies the object name to Clipboard.

The bottom of the tab contains the tabs allowing to control the object output (the tabs [Manual ctrl](#) and [Automatic ctrl](#)) and default value of the object (the tabs [Default manual ctrl](#) and [Default automatic ctrl](#)).

## MANUAL CTRL

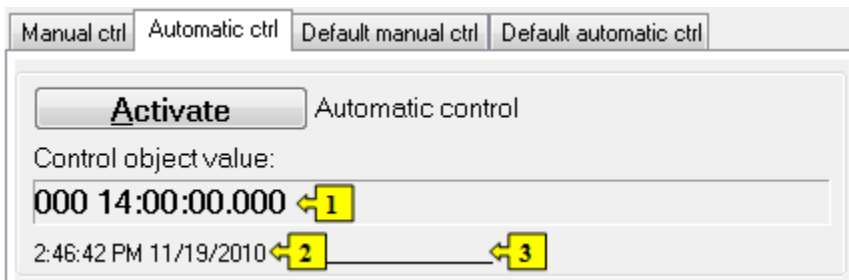
The tab allows to set manually a value of the object along with user attributes (flags). It contains the button **Activate**, current object value and value time. Clicking the button **Activate** opens the dialog box to confirm the activation of the *Manual control* status for the object. After clicking the buttons **Yes** and **Execute** in that dialog box, the tab **Manual ctrl** has the following appearance:



1	Depending on the <b>Execute</b> button, the <b>SET</b> button is used as follows: <ol style="list-style-type: none"> <li>1. If the <b>Execute</b> button is NOT in the control window, then clicking the <b>Set</b> button sets up given output object value along with value flags (attributes).</li> <li>2. If the <b>Execute</b> button IS in the control window, then clicking the <b>Set</b> button just "prepares" given output object value along with value flags (attributes) to set.</li> </ol>
2	Clicking the button sets up the given output object value and value flags "prepared" to set by clicking the button <b>Set</b> . <b>Note:</b> The button <b>Execute</b> is in the control window, if the option <b>Acknowledge</b> is checked in the object configuration in the process <a href="#">D2000 GrEditor</a> .
3	Input mask: full / by transformation palette
4	Control arrow buttons to set an output object value.
5	Opens the dialog box to set flags of the output object value.

## AUTOMATIC CTRL

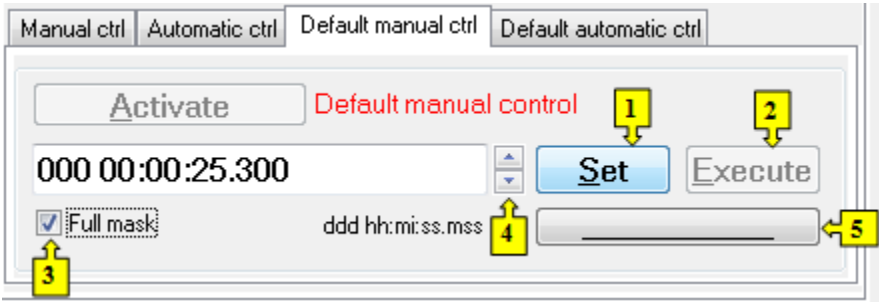
The tab allows to use a value of the control object as the output object value. It contains the button **Activate**, current object value and value time. Clicking the button **Activate** opens the dialog box to confirm the activation of the *Automatic control* status for the object. In the mode, the value of the output object copies the value and flags of the control object (the option *Control object* in the I/O tag configuration).



1	Value of the control object.
2	Time of the control object value.
3	Flags (user attributes) of the control object value.

**DEFAULT MANUAL CTRL**

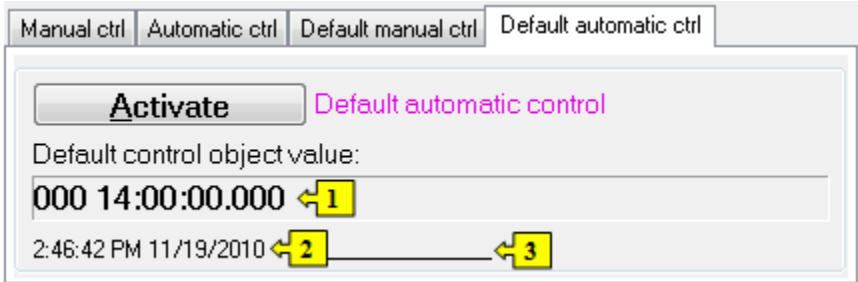
The tab allows to set manually a default value of the object along with user attributes (flags). It contains the button **Activate**, current object value and value time. Clicking the button **Activate** opens the dialog box to confirm the activation of the *Default value* status for the object. After clicking the buttons **Yes** and **Execute** in that dialog box, the tab **Default manual ctrl** has the following appearance:



1	Depending on the button <b>Execute</b> in the control window, the button <b>Set</b> is used as follows: <ol style="list-style-type: none"> <li>If the button <b>Execute</b> is NOT in the control window, then clicking the button <b>Set</b> sets up the default value and value flags.</li> <li>If the button <b>Execute</b> IS in the control window, then clicking the button <b>Set</b> just "prepares" the default value and value flags to set.</li> </ol>
2	Clicking the button sets up the default value and value flags "prepared" to set by clicking the button <b>Set</b> . <p><b>Note:</b> The button <b>Execute</b> is in the control window, if the option <b>Acknowledge</b> is checked in the object configuration in the process <a href="#">D2000 GrEditor</a>.</p>
3	Input mask: full / by transformation palette.
4	Up and down arrow to set a default value of the object.
5	Opens the dialog box to set flags of the default value.

**DEFAULT AUTOMATIC CTRL**

The tab allows to use a value of the control object as the default value. In the mode, the value of the object copies the value of the control object (the option Control object in the I/O tag configuration). Clicking the button **Activate** opens the dialog box to confirm the activation of the *Default value* status for the object.



1	Value of the control object.
2	Time of the control object value.
3	Flags of the control object value.