


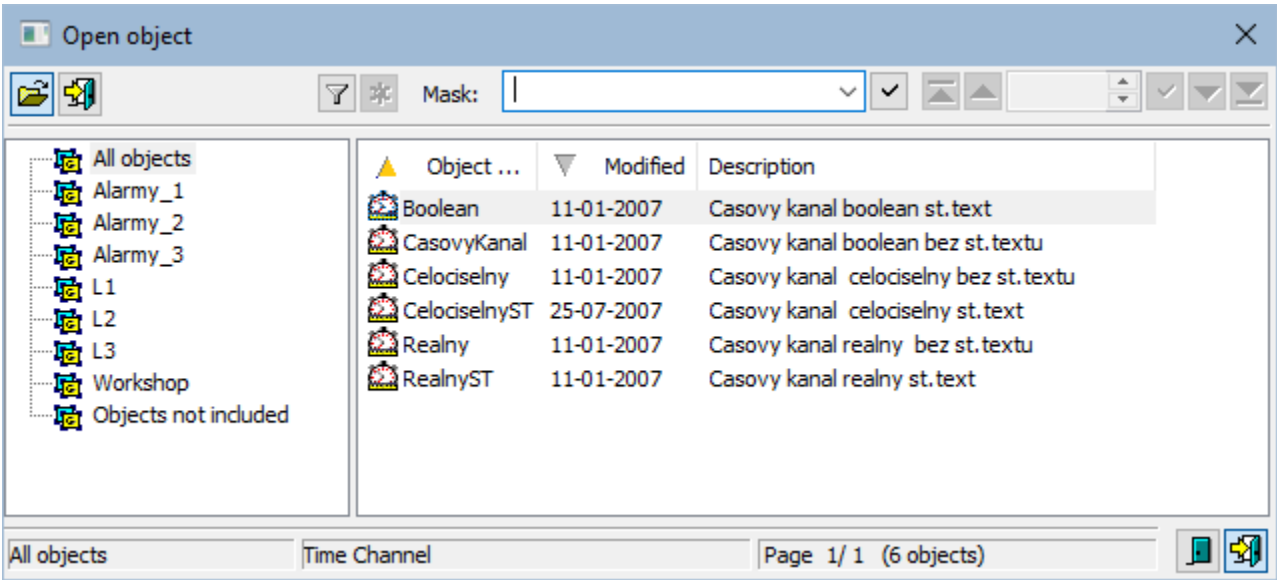
Open a Time Channel (Work with D2000 HI)


Open a time channel



Each time channel is identified by unique name of and description in the D2000 system.

To open a time channel:

- a. Select the **Time channels** item from the **Open** menu or click  button in the [Main toolbar](#).
- b. Opened selection widow contains a list of time channels.





- 1. Select required time channels from the list.
- 2. Click  button. A time channel may be opened by double-click on its name.

To find a particular time channel in the list is possible by [mask](#) or by filter (clicking on button ). By using filter the mask is blocked but the text is not deleted. Push the ENTER key or button  to start searching.


The text from filter is deleted after clicking on button . The button is active only if filter contains some text.

The buttons placed on the bottom right corner determine the behaviour of the selection window after selecting an object:

	Unclose the selection window.
	Close the selection window.

Note

- If the notice **List is empty!** appears in the window then no time channel, matching entered mask, has been created, or logged on user does not have the rights to access to time channels.

 **Related pages:**
[Time channels](#)