

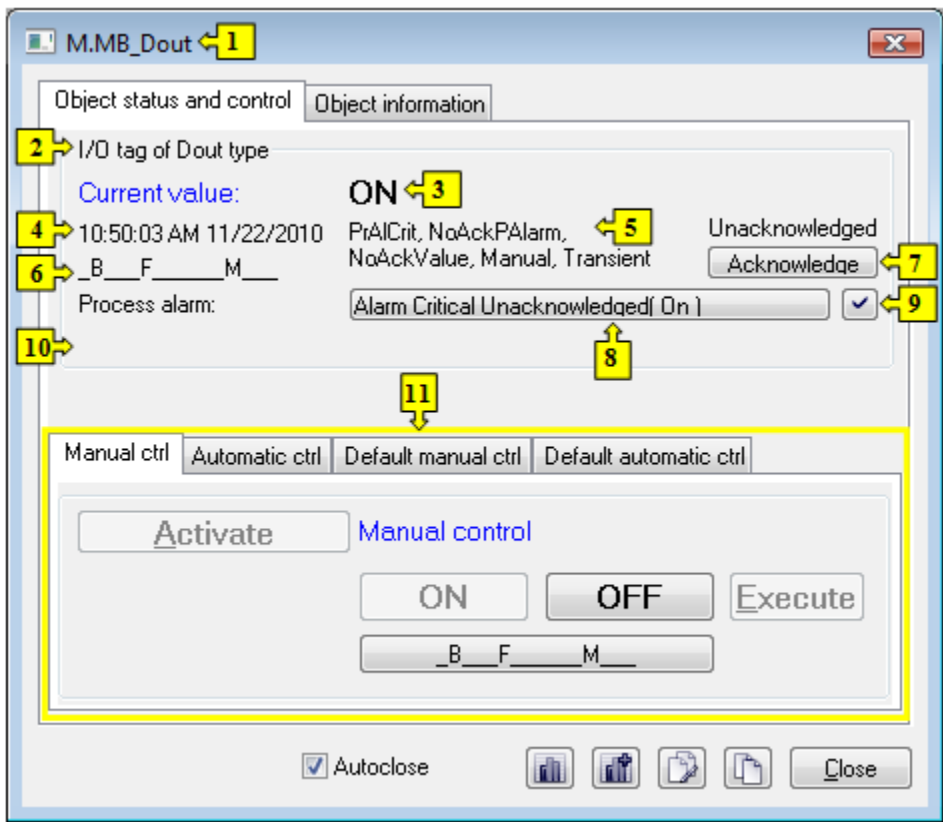
Control the Digital Output I/O Tags (DO) (D2000/Work with D2000 HI/Monitoring and Controlling of D2000 System Objects)

Controlling digital output I/O Tags (DO)





Clicking a graphic object with an I/O Tag of DO (Digital output) type connected to control (the user has sufficient access rights) opens the control window that consists of two tabs:

[Object status and control](#)
[Object information](#)

Object status and control



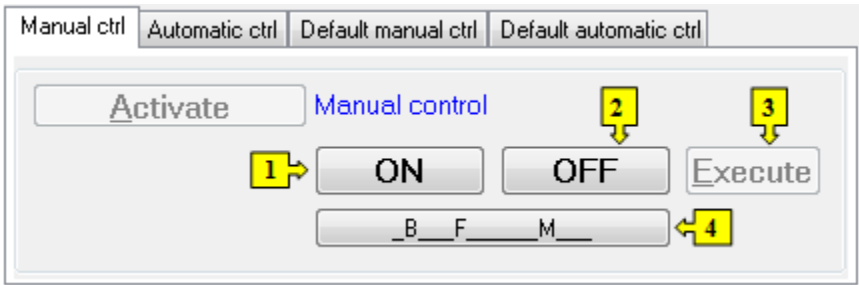
1	Object name.
2	Object description.
3	Current value and technical units of the object. Note: If the object is in the <i>Default value</i> state (see the tabs Default manual ctrl or Default automatic ctrl), there is displayed the text Default value instead of Current value .
4	Value time.
5	Object states .
6	Object value flags (user attributes). There are shown the flags, the value of which is TRUE.
7	Acknowledges the object value.
8	Opens the dialog box to control the current process alarm .
9	Acknowledges current process alarm.
10	Telemetric value of the object. Note: Value is shown if the object is in the <i>Default value</i> state (see the tabs Default manual ctrl or Default automatic ctrl).

11	Part of the control window for controlling the output and default value .
	Opens a dynamic graph of the object.
	Opens a multigraph of the object.
	Inserts the object into the current page of the Browser if opened. If it is not opened, clicking the button opens it and inserts the object into the first page of the Browser.
	Copies the object name to Clipboard.

The bottom of the tab contains the tabs allowing to control the object output (the tabs [Manual ctrl](#) and [Automatic ctrl](#)) and default value of the object (the tabs [Default manual ctrl](#) and [Default automatic ctrl](#)).

MANUAL CTRL

The tab allows to set manually a value of the object along with user attributes (flags). It contains the button **Activate**, current object value and value time. Clicking the button **Activate** opens the dialog box to confirm the activation of the *Manual control* status for the object. After clicking the buttons **Yes** and **Execute** in that dialog box, the tab **Manual ctrl** has the following appearance:

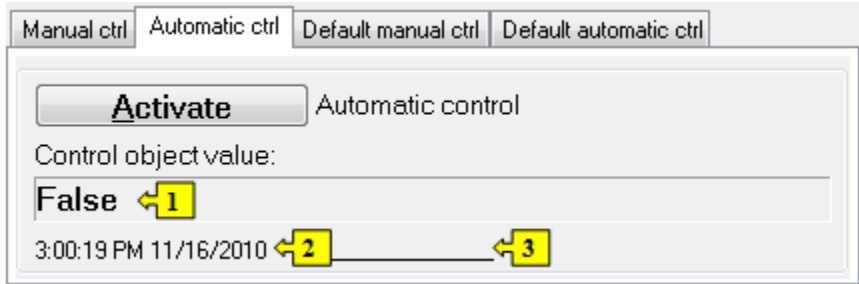


1, 2	Depending on the Execute button, the ON or OFF button are used as follows: <ul style="list-style-type: none"> 1. If the Execute button is NOT in the control window, then clicking the *ON or *OFF button sets up given output object value along with value flags (attributes). 2. If the Execute button IS in the control window, then clicking the ON or OFF button just "prepares" given output object value along with value flags (attributes) to set.
3	Clicking the button sets up the given output object value and value flags "prepared" to set by clicking the button ON or OFF . Note: The button Execute is in the control window, if the option Acknowledge is checked in the object configuration in the process D2000 GrEditor .
4	Opens the dialog box to set flags of the output object value.

* **ON** and **OFF** buttons depend on the object definition (status text that is assigned to the object). If a status text is not assigned to the given object, the button name depends on the system text configuration. Default button names are shown in the figure above.

AUTOMATIC CTRL

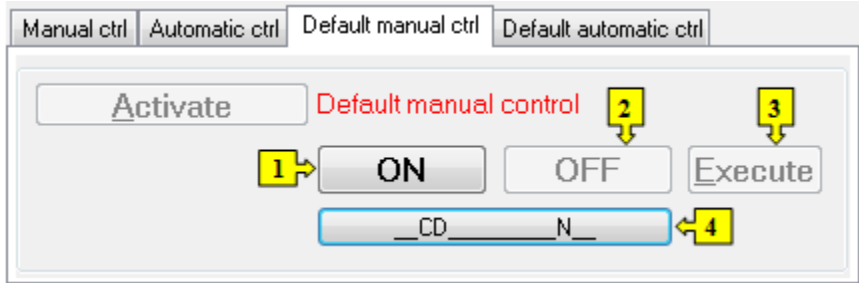
The tab allows to use a value of the control object as the output object value. It contains the button **Activate**, current object value and value time. Clicking the button **Activate** opens the dialog box to confirm the activation of the *Automatic control* status for the object. In the mode, the value of the output object copies the value and flags of the control object (the option Control object in the I/O tag configuration).



1	Value of the control object.
2	Time of the control object value.
3	Flags (user attributes) of the control object value.

DEFAULT MANUAL CTRL

The tab allows to set manually a default value of the object along with user attributes (flags). It contains the button **Activate**, current object value and value time. Clicking the button **Activate** opens the dialog box to confirm the activation of the *Default value* status for the object. After clicking the buttons **Yes** and **Execute** in that dialog box, the tab **Default manual ctrl** has the following appearance:

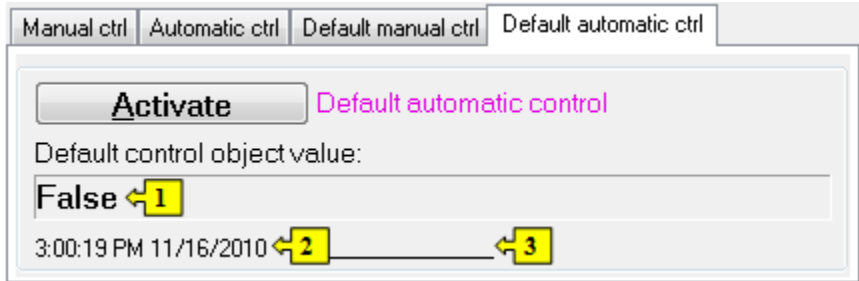


1, 2	Depending on the buttons Execute in the control window, the buttons *ON or *OFF are used as follows: <div> <div>1. If the button Execute is NOT in the control window, then clicking the button ON or OFF sets up the default value and value flags.</div> <div>2. If the button Execute IS in the control window, then clicking the button ON or OFF just "prepares" the default value and value flags to set.</div> </div>
3	Clicking the button sets up the default value and value flags "prepared" to set by clicking the button Set . <div>Note: The button Execute is in the control window, if the option Acknowledge is checked in the object configuration in the process D2000 GrEditor.</div>
4	Opens the dialog box to set flags of the default value.

* **ON** and **OFF** buttons depend on the object definition (status text that is assigned to the object). If a status text is not assigned to the given object, the button name depend on the system text configuration. Default button names are shown in the figure above.

DEFAULT AUTOMATIC CTRL

The tab allows to use a value of the control object as the default value. In the mode, the value of the object copies the value of the control object (the option Control object in the I/O tag configuration). Clicking the button **Activate** opens the dialog box to confirm the activation of the *Default value* status for the object.



1	Value of the control object.
2	Time of the control object value.
3	Flags of the control object value.