

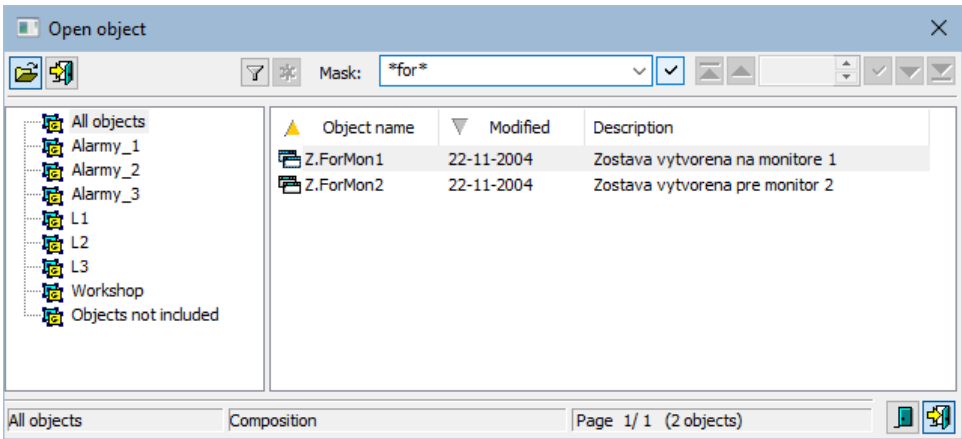
# Open a Composition (Work with D2000 HI)


## Opening a composition



Every composition of graphic information windows is uniquely determined by name and description in the list.

To open a composition:

- a. Select the **Compositions** from the **Open** menu or click  button from the **Main toolbar** (or press CTRL+Q).
- b. Opened window contains a list of defined compositions.





- 1. Select required composition from the list and click on its name.
- 2. Click  button. You can open the composition by double-click on its name, too.

To find a particular composition in the list is possible by **mask** or by filter (clicking on button ). By using filter, the mask is blocked but the text is not deleted. Push the ENTER key or button  to start searching.

The text from filter is deleted after clicking on button . The button is active only if filter contains some text.

The buttons placed on the bottom right corner determine the behaviour of the selection window after selecting the object:

	Unclose the selection window.
	Close the selection window.

## Note

- If the notice **List is empty!** appears in the window then no composition matching entered mask has not been created, or logged on user does not have the access rights to compositions.