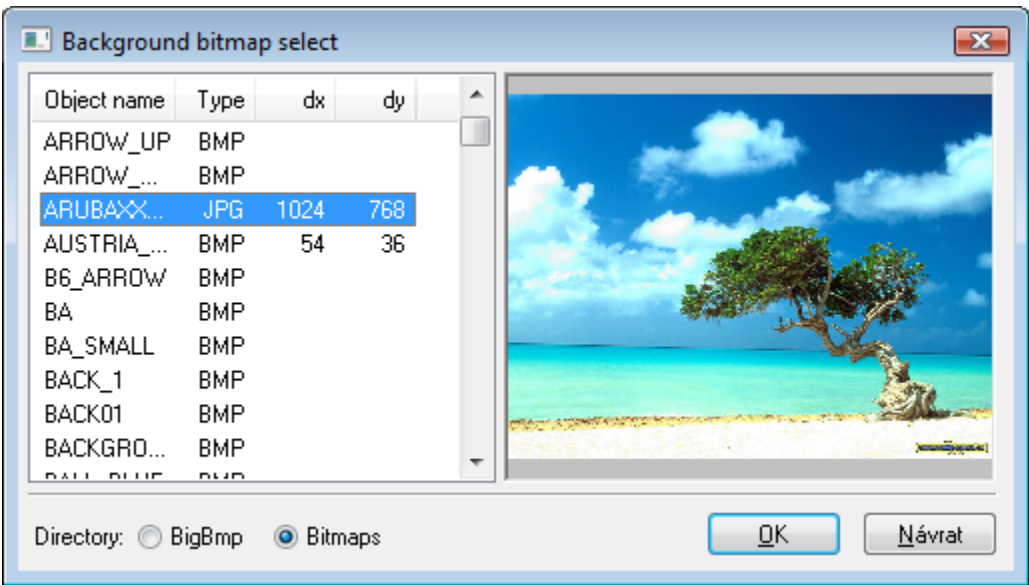


Select a Background Bitmap

Selection of a background bitmap

A background bitmap is being selected from a list of files of *JPG*, *TIF* and *BMP* types. To open the list, click the arrow button placed next to the input edit box below the item **Background** in the [Picture settings](#) dialog box.




The list contains all bitmaps either from the **BIGBMP** directory of the [application directory](#) or the **BITMAPS** directory - according to your selection. Two directories are used because the **BIGBMP** directory that is placed on a remote console is never automatically synchronized with the application server.

The bitmap resolution is defined in the columns *dx* and *dy*. At first the bitmap must be selected from the list and then the columns will be filled. If a text "----" occurs in the columns, instead of the size, it means that the bitmap could not be loaded from the file.

Warning:

- The files, which names along with the extensions, are longer than 21 characters will not be shown in the list.
- The directory **BIGBMP**, placed on a remote console, is not synchronized with the application server.
- The picture data contains only the picture name. If the picture is placed in both directories, it is taken from the directory **BIGBMP**, although it has been selected from the directory **BITMAPS**.

Use: On the server, you can use a bigger, more detailed picture from the directory **BIGBMP**. On the remote consoles, there may be used a smaller picture easy-transferable via computer networks or Internet.

 **Related pages:**
[Picture settings](#)