

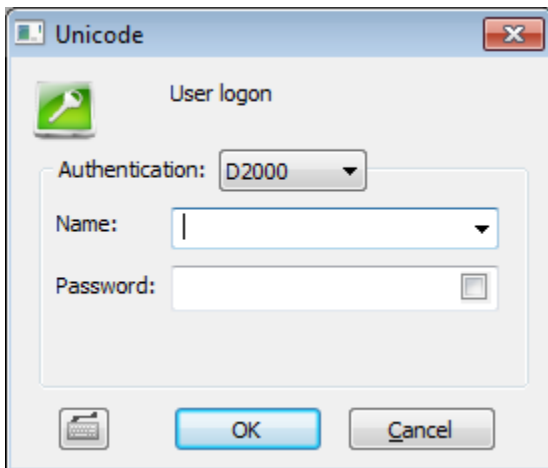
# LogOn (Access to the GrEditor)

## GrEditor - Logon

Operator must be logged on to work with the process [D2000 GrEditor](#). His/her operating range depends on the configuration of operator's access rights. The access rights are defined by a system administrator in the process [D2000 CNF](#).

The dialog box to log on is opened after starting GrEditor. If the dialog box is not open (e.g. after logoff), to log on to the process [D2000 GrEditor](#), use the following way:

1. Select the item **LogOn** from the menu **System**.
2. Type your name and password into the dialog box (if the checkbox in the **Password** field is checked, the password will be displayed).  
Corresponding operations are permitted according to your access rights.



If [Enhanced security](#) is a part of your [D2000 system licence](#), the process [D2000 HI](#) reads a **logon key** (security token) from client computer. Logon key is necessary for user to log on to a D2000 system with *Enhanced security*. The user name is set according to the key which cannot be changed and only password is typed.

After an operator's logon, his/her full name, defined in the configuration of the operator, will be displayed in the [GrEditor window title bar](#).

Clicking on the button  opens an on-screen keyboard.



### Related pages:

- [Access to GrEditor](#)
- [Starting GrEditor](#)
- [Exiting GrEditor](#)
- [GrEditor - LogOff](#)