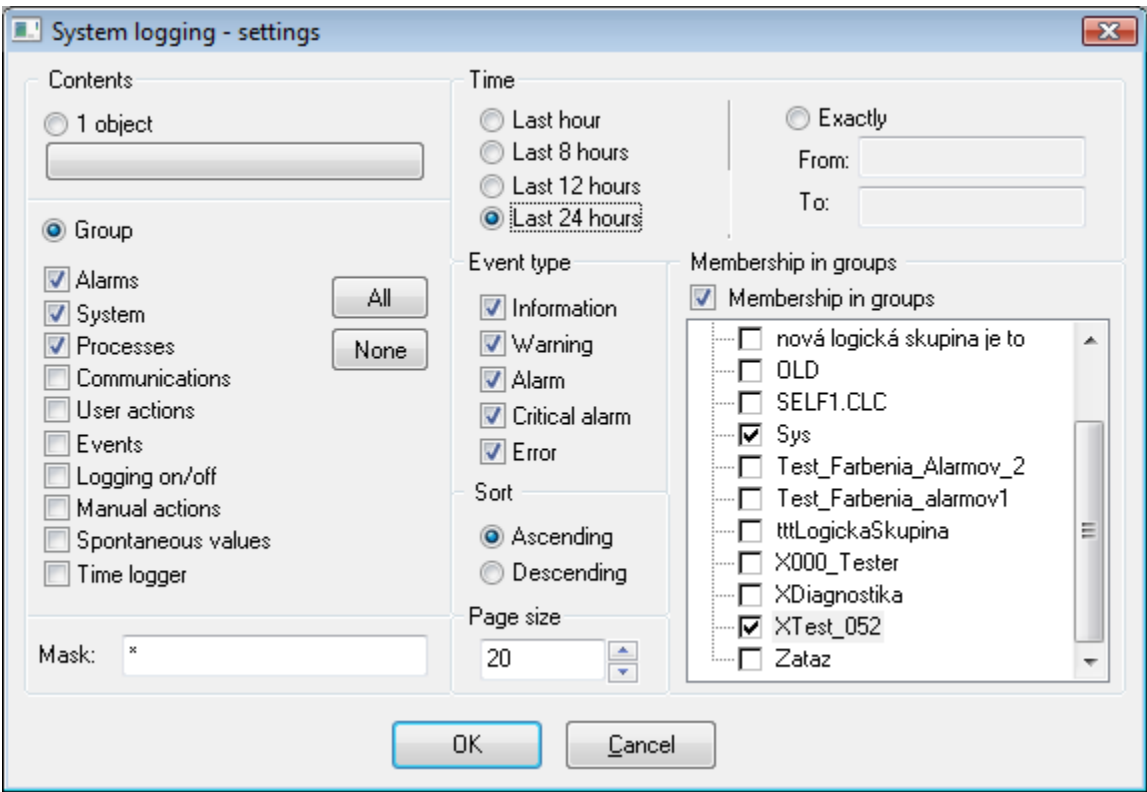


Logging Settings (Monitoring a Logged Process)

System Logging - Settings

The **System Logging - Settings** dialog box is used to define requirements for viewing information from the log database.



Contents

Items located in the **Contents** part are used to set data reading and displaying from the log database. If **1 object** option is enabled then only logged data of one particular D2000 System object will be displayed. This object is selected by clicking the button below this option and then selecting from the displayed list. Name of the selected object will be displayed on the button. Checking **Group** option will display data of a group of system objects or events. You can set details of each event in this case. You can choose the following groups of events:

Alarms	All changes of alarm states – raising, finishing, acknowledgement, etc.
System	System start and stop.
Processes	All changes of process states – start, stop and breakdown.
Communications	Communication failures.
User actions	Operator's interventions in process D2000 HI .
Events	Event logs.
Logging on / off	Operator's logon and logoff in individual system processes.
Manual actions	Not yet implemented.
Spontaneous values	Spontaneous value change of an object of <i>Switch</i> type, without operator's intervention (circuit-breaker failure).
Time logger	Special communication data.

Mask

Mask allows to include in the list only those objects, names of which have some common symbols. You can use special symbols in mask, that are described in the following table.

Character	Meaning
*	Substitutes an arbitrary number of characters.
?	Substitutes just one character.

[characters]	Allows to enter a few characters (without delimiter), that may occur on a specific position.
[^characters]	Allows to enter a few characters (without delimiter), that may not occur on a specific position.

In case the first character is exclamation mark (!) the mask is interpreted as [Perl Compatible Regular Expression](#).

Example: The expression H..CESA* AND (*.TEPL.* OR *.TEPL_* OR *_TEPL_*) can be write as !^H\\.CESA.*((\\TEPL\\)(\\TEPL_)(_TEPL_)). The records cannot be filtered by mask with the operations AND and OR in the system logging. However, if the record is transferred into regular expression the mask can be used in certain circumstances.

Time

The group of dialog box items grouped in Time part allows to define a time period for data displaying from the log database:

- **Last hour** – logged data captured during last hour,
- **Last 8 hours** – logged data captured during last 8 hour,
- **Last 12 hours** – logged data captured during last 12 hour,
- **Last 24 hours** – logged data captured during last 24 hour,,
- **Exactly** – user defines a time interval for logged data displaying.

If the option **Exactly** is checked, you must define a new time interval. This definition is performed in the part of dialog box.

Required time interval is defined **From** (begin time) and **To** (end time) a certain time point. After enabling **Exactly** radio button, the dialog box to [set a new time interval](#) is automatically opened.

Event type

Each event in the logging list is of specific type. Event type options allow to set types of events that will be included in the list.

Sort

Log database offers data sorting:

- **Ascending** - data are sorted by the time of their being logged into the log database in ascending order, i.e. from the oldest event to the latest one.
- **Descending** - data are sorted by the time of their being logged into the log database in descending order, i.e. from the latest event to the oldest one.

Membership in groups

If checked, membership in groups is to be taken into account, as well. Only events of objects belonging to a particular logical group may be included in the list. If no logical group is selected then the list will be composed of events of objects regardless of membership in logical groups. Right mouse-click on the tree structure of logical group will open the following menu:

Uncheck All	Unchecks all selected groups.
Check with Children	Checks selected group including all its children.
Uncheck with Children	Unchecks selected group including all its children.

Click **OK** button after definition of all the settings in "System Logging – Settings" dialog box. The dialog box [displaying data](#) from the log database according to defined parameters will be opened.

Related pages:

[System event logging](#)