
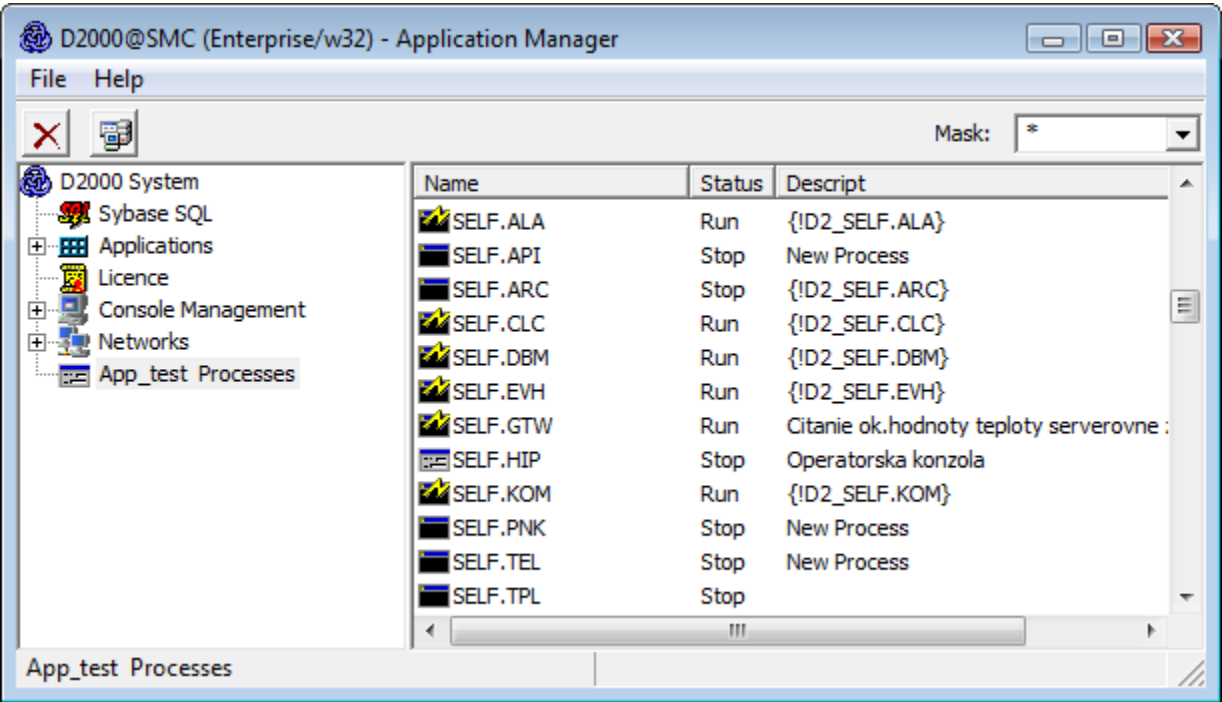


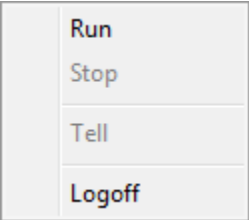
Processes of Running Application

List of currently running processes

Clicking the item  **AppName Processes** displays the list of the processes of the currently running application (*APPName*) in the right window part. Any mask, that is entered in the upper right part of the window - the input field **Mask**, may be applied to the list.



Right-mouse clicking on any process opens the dialog box with one option **Logon** - logon to the process [D2000 Server](#). The process [D2000 Server](#) only accepts the logon with administrator access rights. The another right-mouse clicking on any process displays the following pop-up menu:



Run	Runs the selected process.
Stop	Stops the selected process.
Tell	Allows sending Tell commands to selected process.
Logoff	Log off from the process D2000 Server .