

Johnson Controls N2-Bus

Johnson Controls N2-Bus protocol

[Supported device types and versions](#)
[Communication line configuration](#)
[Communication station configuration](#)
[Station parameters](#)
[I/O tag configuration](#)
[Time Schedules configuration](#)
[Literature](#)
[Changes and modifications](#)
[Document revisions](#)

Supported device types and versions

This protocol supports data reading from/writing to Johnson Controls devices - DX9100 series units, that are equipped with a serial port for N2 Bus. The implementation currently does not support the N2 Open standard.

Communication line configuration

- Categories of communication line: [Serial](#), [SerialOverUDP](#) [Device Redundant](#), [RFC2217 Client](#), [TCP-IP/TCP](#).
- Transmission parameters N2 Bus, usually set to 9600 Baud, 8 data bits, no parity, 1 stop bit.

Note: on [TCP-IP/TCP](#) line, multiple hostnames or IP addresses separated by comma/semicolon can be defined to connect to multiple devices in a round-robin fashion.

Communication station configuration

- Communication protocol: **Johnson Controls N2-Bus**.
- The address of the station on N2 Bus is the number in the range of 1 to 255, the address 0 is reserved.
- Reading of object values on the station is executed periodically according to time parameters "Polling parameters".
- The synchronization of real-time can be activated - check the **Enable** parameter in the "Synchronization period" section and set the period, which defines a period of writing a real-time.

Station parameters

[The configuration dialog box](#) - **Parameters** tab.

The parameters influence some optional parameters of the protocol. There can be defined the following parameters of station protocol:

Table 1

Parameter	Meaning	Unit	Default value
Wait Timeout	The delay between reading the responses until it is completed.	ms	100 ms
Wait First Timeout	The first waiting for a response after sending a request.	ms	200 ms
Retry Timeout	The delay between request retries if a communication error occurs.	ms	500 ms
Max. Wait Retry	The number of readings of a response until it is completed.	-	10
Retry Count	The number of request retries when an error in communication occurs.	1 .. 32	2
Max Errors	The maximum number of consecutive errors in one station reading cycle after which the next I/O tags are no longer read. A value of 0 causes all I/O tags to be read. The parameter is implemented to prevent one non-communicating station from causing an excessive reading delay for other stations on the line.	-	0
Full Debug	Enables the detailed debug information about the values of I/O tags that were obtained by polling.	YES /NO	NO

I/O tag configuration

Used I/O tags: **Ai, Ao, Ci, Co, Di, Dout**.

The address of the I/O tag can be defined in two formats:

- [predefined items of DX9100](#)

2. user format

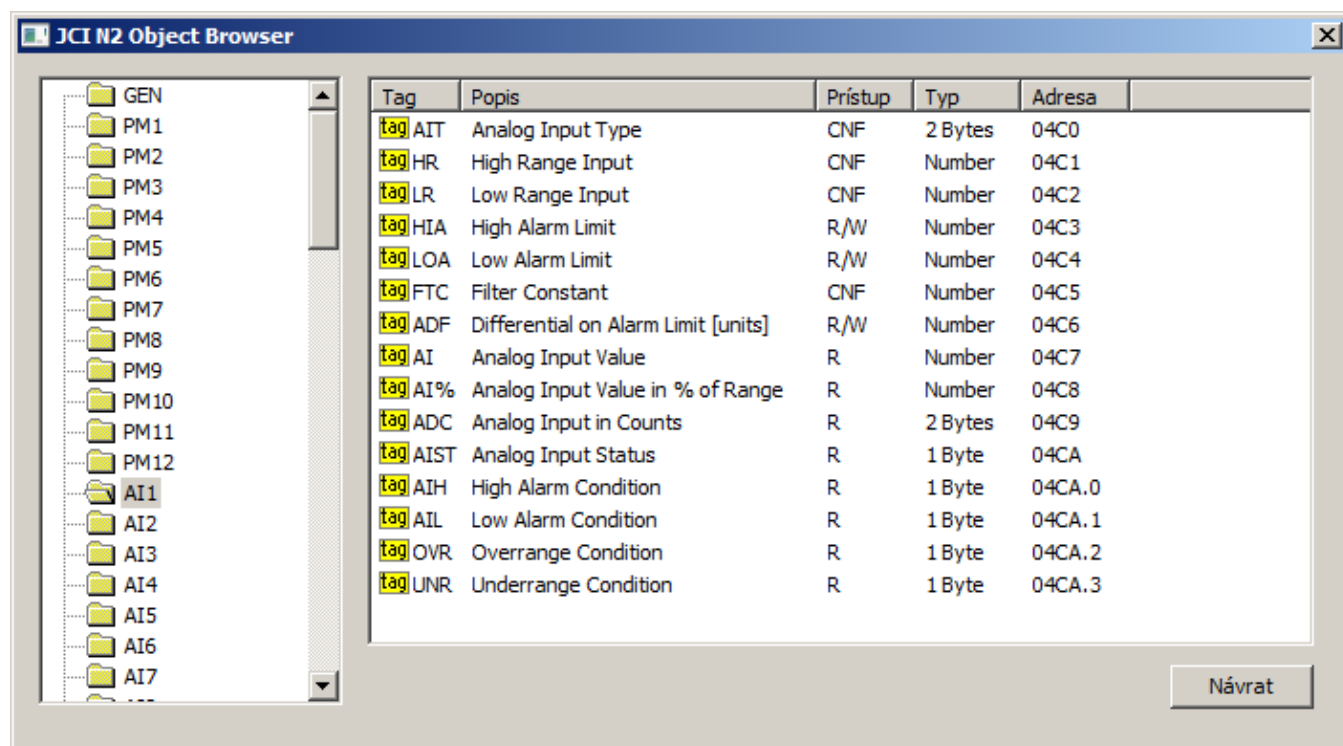
1. Predefined items of DX9100 have format:

Modul.Tag

Where **Modul** is the name of the module and **Tag** is the name of the tag within a module. The list of items is based on the documentation [DX-9100 Configuration Guide](#), Appendix B. Since this is a large list of the static items, an "Object Browser" dialog window is prepared, where you may find the particular object. In the "Item Address" section click the button next to the "Item" field.



The following window opens:



The left part of the window contains the list of modules. After clicking the particular module, the list of tags that belong to this module is displayed in the right part of the window.

Parameters of items:

Tag: Name of the tag.

Description: Short description of the item.

Access: Access level (R - read-only, R/W - read and write, CNF - read and write, the configuration parameter is stored into EEPROM).

Type: Value type of item (see also [here](#)).

Address: Physical address of item that is used for reading/writing. It is calculated from the starting address of the module and offset tag (in hexadecimal format). The bit number (1 up to 32) of the addresses of binary items is placed after the dot.

After double-clicking a selected tag, the dialog window is closed and the name of the item is copied in the "Item" field in the "Item Address" section.

2. User format:

#Typ.Addr[.Bit]

Where:

Type is a value type of item. There are supported these types:

Value type	Range, value interpretation
U8	8 bits unsigned (JC tagging 1 Byte)
U16	16 bits unsigned (JC tagging 2 Byte)
U32	32 bits unsigned (JC tagging 4 Bytes)
I8	8 bits signed (JC tagging 1 Byte Int)
I16	16 bits signed (JC tagging 2 Byte Int)
FP16 or N	16 bits floating point in Johnson Controls format (JC tagging Number)
CONN	Connection - interpreted as 16 bits unsigned
DST	Destination - interpreted as 16 bits unsigned

Address is the address of the item in decimal format.

Bit is a bit number. An optional parameter, it is relevant only for binary items, when the particular bit is extracted from the value of the whole item (for U8, U16, or U32 items).

Examples:

N.1232
U8.765.1
U32.4078

This user format is advisable to use when the required item is not in the list of predefined items.

Time Schedules configuration

Starting with D2000 version 10.1.37 (patches from 12.4.2016 and newer) it is possible to configure Time Schedules. In "Object Browser" new modules *TS1cfg*, *TS2cfg* .. *TS8cfg* have been added, each of them represents a configuration of one Time Schedule.

Every time schedule has several general parameters and a set of eight *begin times* (BETIME1..8), *end times* (EETIME1..8), and days when a time schedule is active (EEDAYS1..8).

A time interval is configured by writing values to *begin time* and *end time*. Writing is supported for relative time (e.g. 01:05:00) and for Ao/Co (value in seconds, i.e. 01:05:00 equals to 3 900). Times are sent to the device as hours:minutes (i.e. seconds are ignored). Invalidation of time is possible by writing an invalid value or value 24:00:00 or greater (86400 seconds or more).

By writing a value to days (EEDAYS1..8) it is possible to specify during which days a time schedule is active. Value is a number (0-255) interpreted as a bitmask:

- 1.bit - Monday
- 2.bit - Tuesday
- 3.bit - Wednesday
- 4.bit - Thursday
- 5.bit - Friday
- 6.bit - Saturday
- 7.bit - Sunday
- 8.bit - Holidays

Literature

1. DX-9100 Configuration Guide, © 2000 Johnson Controls, Inc., Code No. LIT-6364030, Issue Date 0900

Changes and modifications

-

Document revisions

- Ver. 1.0 - May 3, 2013 - Creating a document.



Related pages:

[Communication protocols](#)