

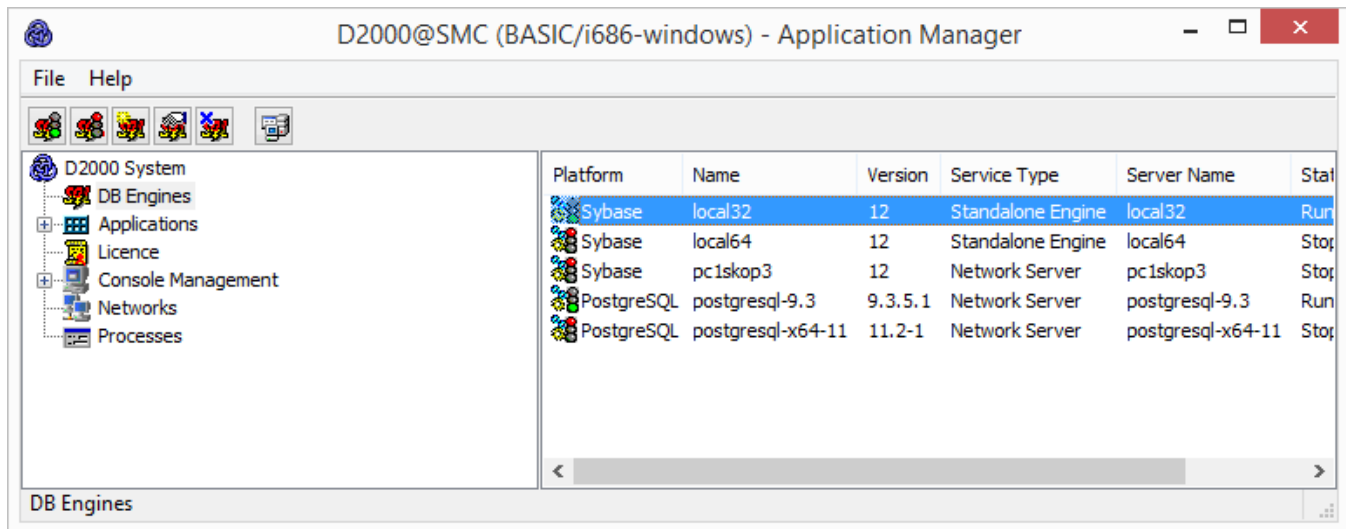
Database servers management

D2000 system uses SQL databases, that are accessible via ODBC interface, as data storage. By default, the database PostgreSQL, SQL Adaptive Server Anywhere from the Sybase company and Microsoft SQL Server respectively its freeware version Microsoft Desktop Engine (MSDE) are supported.

The following table displays the number of connections to the database server:

| Proces | Connection name | Number |
|--------------|-------------------------------|--------|
| D2000 Server | Configuration | 3 |
| | Log database depository | +3 |
| | Backup (triggered externally) | +1 |
| Archive | Archive database | 3 |
| | Archive depository | +3 |
| | Backup | +1 |
| DBManager | (configuration dependent) | |

The table above shows, that any simple application with enabled both the log database depository and the process Archive can use as many as 14 connections to the database server. Selecting the option **DB Engines** in the process [D2000 Application Manager](#), the window has looks like this one:



Clicking the right-mouse button on an existing server, you can carry out the following operations:

| | |
|-------------------|---|
| New Server | Creates a new db server |
| Edit | Allows to modify the selected db server |
| Delete | Deletes the selected db server |
| Run | Runs the selected db server |
| Stop | Stops the selected db server |

Creating a new MSDE database servers (engines) through the process [D2000 Application Manager](#) is not supported, because the servers are created by the [MSDE installation](#).

Creating a new PostgreSQL through the process [D2000 Application Manager](#) is not supported, because the servers are created by the PostgreSQL installation.

Sybase database server parameters:

The following dialog box will appear after selecting the **New Server** item in the pop-up menu:

Adaptive Server Anywhere

Service name:

Service type

☐ Standalone Engine

☒ Network Server

Version

☒ V 6.0

☐ V 7.0

☒ Allow service to interact with the desktop

Path for executable

...

Startup

☐ Automatic

☒ Manual

☐ Disable

Parameters

OK

Cancel

| | | | |
|---------------------|---|---|--|
| Service Name | System server name used for its saving. The server name is extended automatically according Service Name, but may be changed - the word placed after the parameter -n in the input field Parameters. | | |
| Service Type | If Sybase Network server is installed, it is possible to configure it. Network server is not limited for number of connections. | | |
| Version | Selection of a version. | | |
| Path for executable | Path to an exe file representing the database server. The file is different according to the selected Service Type. | | |
| Startup | Definition of the server start-up. In this case, if the radio button Automatic is not selected, the service will be started automatically by the process D2Start that starts the process D2000 Server , too. | | |
| Parameters | Server start parameters: | | |
| | -c 8M | cache size | |
| | -nD2000_X | name of database server (Engine Name) | |
| | -m | deleting the log file after finishing the use of database | |
| | -gp 4096 | page size | |
| | -gd ALL | setting of database access level | |