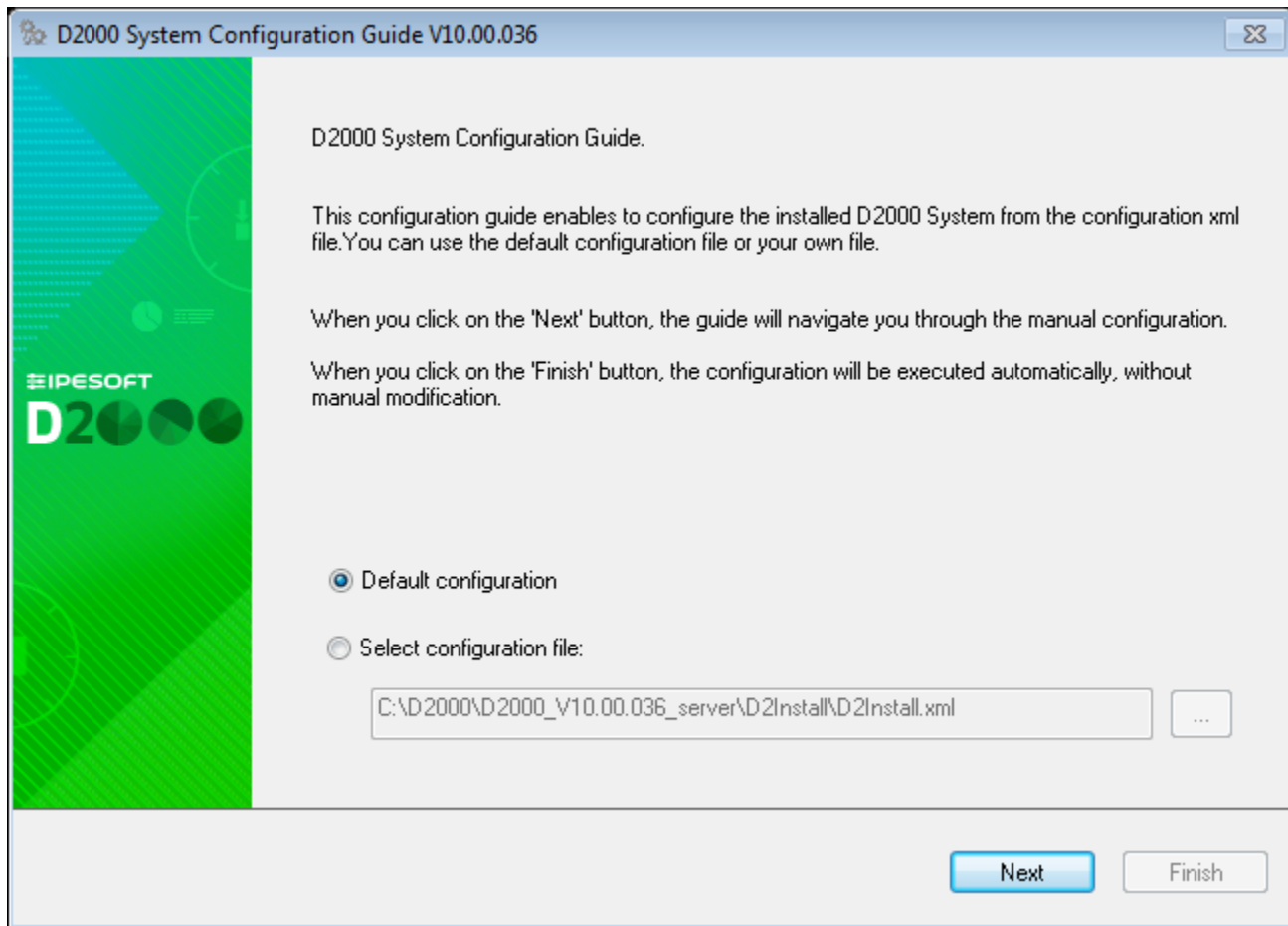


Configuration process

D2000 System Configuration Guide

To start the configuration guide, click on the file **D2Install.exe** in the directory that has been created when creating a new instance.



A structure of the configuration tool is similar to the [installer](#). You may use the "Next" and "Back" buttons when you go through the configuration dialog windows. The "Install" button runs the final configuration.

At first, you have to specify the input configuration file in the initial window. There are two files you may choose - the default configuration file or own file.

The default configuration file *D2install.xml* contains the default settings of system. This file is used when choosing the option "**Default configuration**".

The configuration tool enables both the manual and automatic configuration. When you click on "Next" button, the **manual configuration** will be done. It means, the user is guided through all the necessary dialogs in which he may specify the system settings.

The "Install" button starts the **automatic configuration** according to chosen configuration. The user cannot change the configuration parameters. There will be used those from the defined configuration file.

A user has three options:

1. Use the default configuration (D2install.xml) and manually pass the configuration guide.
2. Specify own configuration file and manually pass the configuration guide.
3. Specify own configuration file and automatically configure D2000 System without the guide.

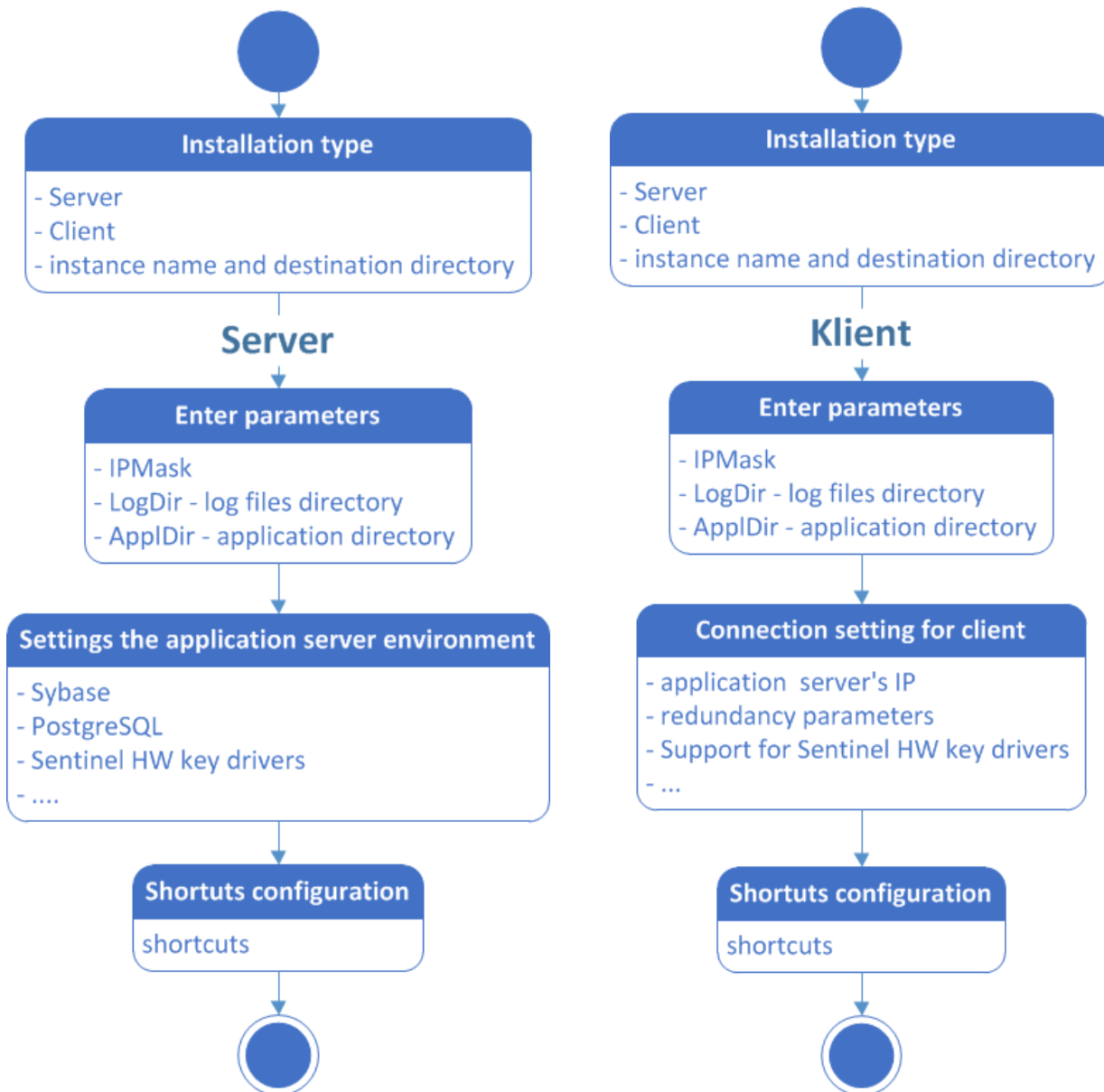
When selecting the automatic configuration, all the steps that configure the system are skipped and the final configuration is started (see the section "[Final configuration](#)").
All the steps below will be done, when selecting the manual configuration.

Manual configuration

In [the installation guide](#) you could chose one of the following types of installation:

- **Server**
- **Client:**
 - Basic
 - Developer
 - Remote

Each type of installation requires the different system settings. Therefore, the installation guide is different for each installation. The steps of configuration depend on the type of installation and the marked parameters in the single dialog boxes.



Each rectangle represents one or more configuration catalogs for the setting of system parameters. The configuration proceeds according to the arrows. The upper point represents the start position, i.e. the configuration dialog in which you have to choose a type of installation. The end point represents a final configuration as per the settings.

Configuration guide

1. Basic settings (all types of installation)

D2000 System Configuration Guide V10.00.036

IP mask and system directories

Insert the IP mask of network and select the path to the system directories.

IP mask:

255.255.255.0

D2000 directories paths:

Application: C:\D2000\D2000_V10.00.036_server\D2000_APP ...

In the selected directory will be saved application files System D2000.

Logging: C:\D2000\D2000_V10.00.036_server\D2000_EXE\Log ...

In the selected directory will be stored log information on system operation D2000 and its processes.

Back Next Finish

In this dialog window, you define the mask of network and the path to the basic directories necessary for the D2000 System operation:

- Application – the directory to which all files necessary for application will be stored.
- Logging – the directory that will contain the information about the process activity.

This dialog allows to set type of licence used in D2000 System.

Type of licence

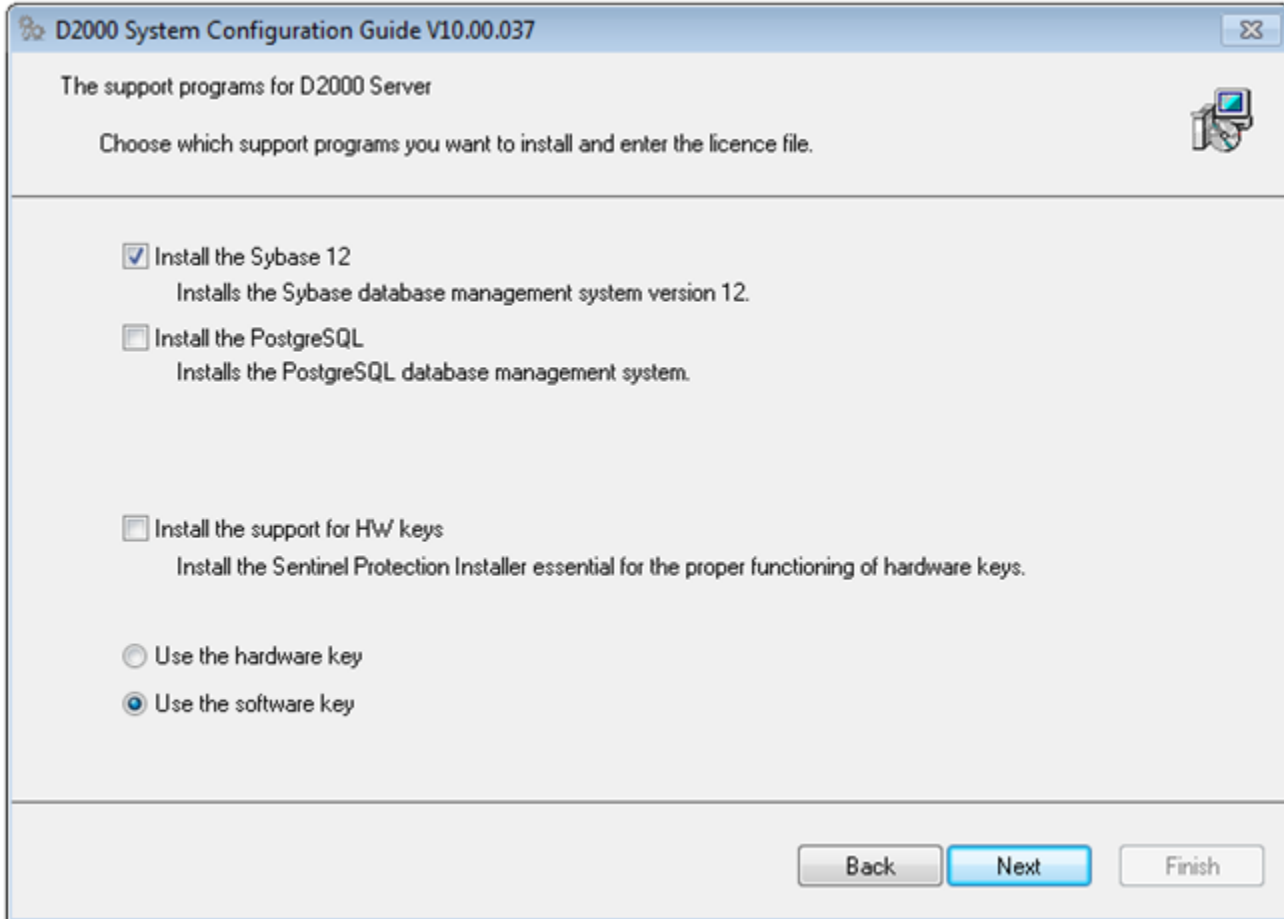
Allows to choose one of the following items:

- Demo
- Basic
- Standard
- Enterprise

Licence file

If a user enters a license file, it is copied to the correct location. Selecting a license file is not required, in case of a license type Demo is not available at all.

2. Server settings (Server)



D2000 System Configuration Guide V10.00.037

The support programs for D2000 Server

Choose which support programs you want to install and enter the licence file.

☒ Install the Sybase 12
Installs the Sybase database management system version 12.

☐ Install the PostgreSQL
Installs the PostgreSQL database management system.

☐ Install the support for HW keys
Install the Sentinel Protection Installer essential for the proper functioning of hardware keys.

☐ Use the hardware key

☒ Use the software key

Back Next Finish

Support programs

The options define which support programs, necessary for running of some parts of D2000 System, are to be installed. If some of the options is checked, this program will be installed after finishing the configuration. If some of the items is checked and disabled, the given program is installed on the computer and need not be installed again.

Use hardware keys / Use software keys

Specifies the type of license keys that will be used for authentication in D2000 System.

3. Connection settings (Client)

It requires to set the connection to D2000 Server. It is either **IP/Computer name** or **name of redundant group**. This setting is determined for all configured clients.

D2000 System Configuration Guide V10.00.036

Connection to a server

Set up a connection to a server or a redundant group of D2000 System.

☐ Connect to a redundant group /RF

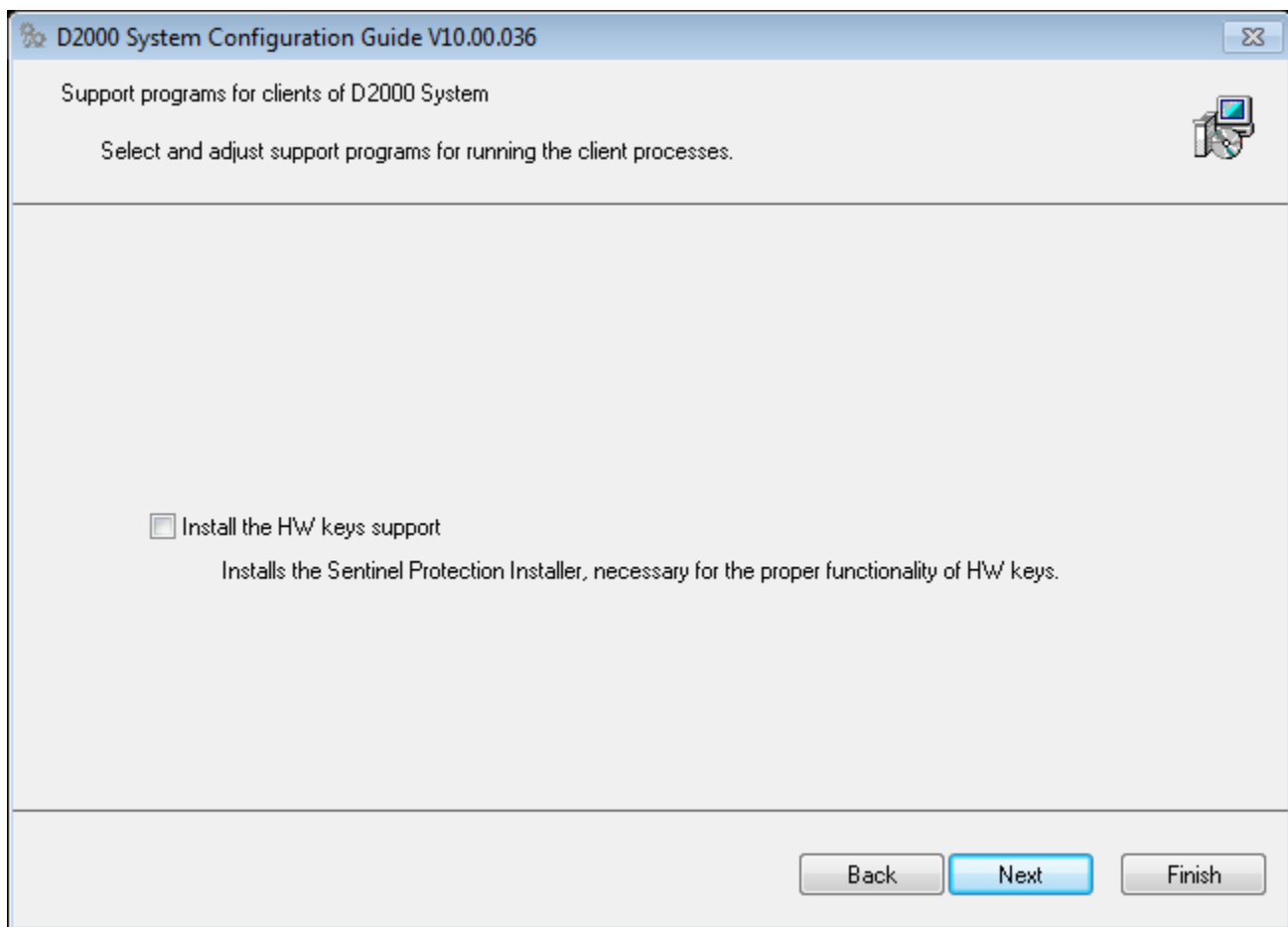
IP/computer name:

localhost

Back Next Finish

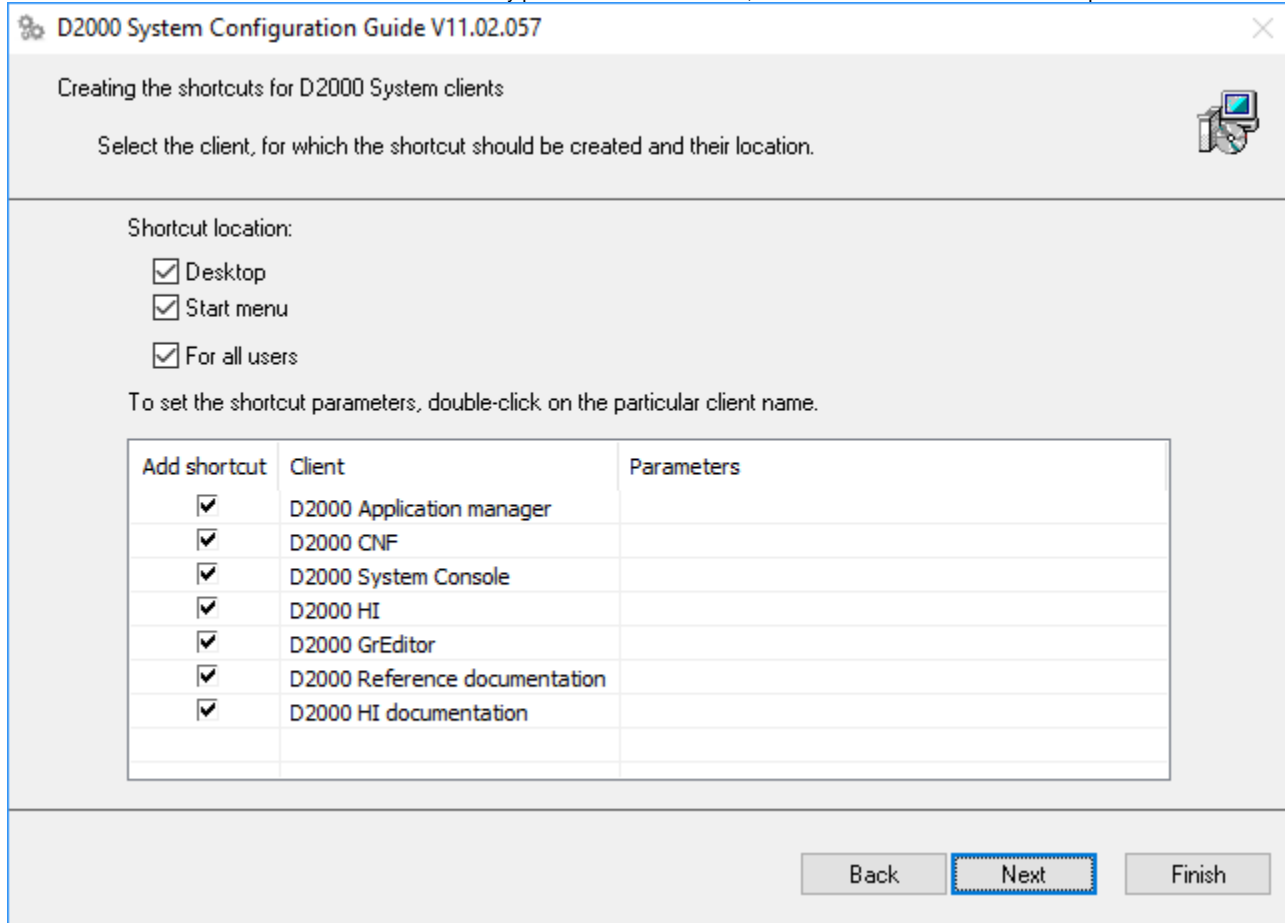
4. Client settings (Client)

This dialog window enables to define which support programs are to be installed for the client processes. It is the support for HW keys.



5. Creating the shortcuts (Client)

In this dialog window user may set the shortcuts of the important processes of D2000 System and their placement. The final configuration will contain all links that are checked in the column "Add shortcut". If any parameter is not checked, no shortcut will be created in the computer.



D2000 System Configuration Guide V11.02.057

Creating the shortcuts for D2000 System clients

Select the client, for which the shortcut should be created and their location.

Shortcut location:

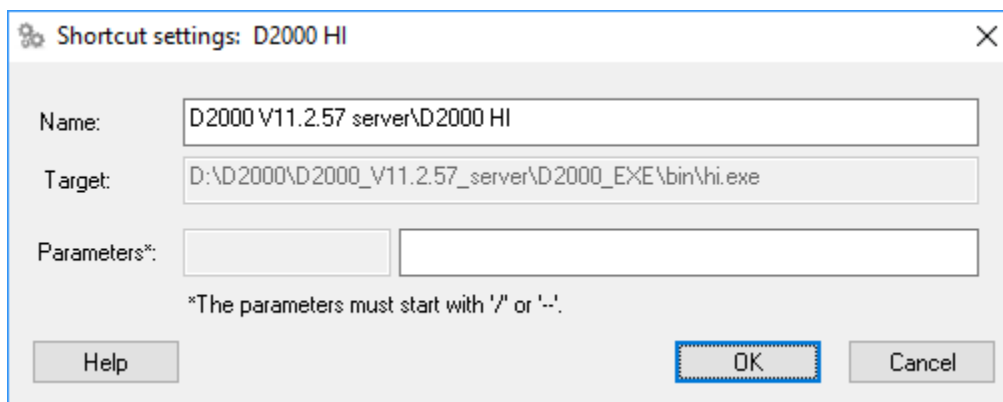
- ☒ Desktop
- ☒ Start menu
- ☒ For all users

To set the shortcut parameters, double-click on the particular client name.

Add shortcut	Client	Parameters
<input checked="" type="checkbox"/>	D2000 Application manager	
<input checked="" type="checkbox"/>	D2000 CNF	
<input checked="" type="checkbox"/>	D2000 System Console	
<input checked="" type="checkbox"/>	D2000 HI	
<input checked="" type="checkbox"/>	D2000 GrEditor	
<input checked="" type="checkbox"/>	D2000 Reference documentation	
<input checked="" type="checkbox"/>	D2000 HI documentation	

Back Next Finish

Double click on the particular client process opens the dialog window in which user may change its relative location ("Name" item) and the start parameters ("Parameters" item).



Shortcut settings: D2000 HI

Name: D2000 V11.2.57 server\D2000 HI

Target: D:\D2000\D2000_V11.2.57_server\D2000_EXE\bin\hi.exe

Parameters*:

*The parameters must start with '/' or '-'.

Help OK Cancel

6. Remote client settings (Remote client)

Next step enables to configure the remote processes of D2000 System. If you check the checkbox in the "Install" column means that the given process will be created.

D2000 System Configuration Guide V10.00.036

D2000 System remote clients

Select and set the remote clients of D2000 System.

The remote clients are the client processes that can be placed on the separate servers than D2000 Server. For standalone work on other servers, they require the separate services, which start and check them.

Check off the "Install" checkbox to install the remote client. To show the detail configuration, double click on the particular remote client.

Install	Client
<input type="checkbox"/>	D2000 Archiv - REMOTE
<input type="checkbox"/>	D2000 Kom - REMOTE

Back

Next

Finish

Double click over the remote client to open the configuration dialog box, in which the user may set next parameters.

Remote client settings: D2000 Archiv - REMOTE

Name: archiv

Description:

Path: D:\D2000\D2000 R32\D2000_EXE\bin64\archiv.exe

Parameters: /Sd2000_server

Start-up: Manual

☒ Local system account

☐ Allow to interact with desktop

☐ Login:

Password:

Name: archiv_WD

Descript:

Start-up: Automatic

Initialization:

Frequency:

☒ Local system account

☐ Allow to interact with desktop

☐ Login:

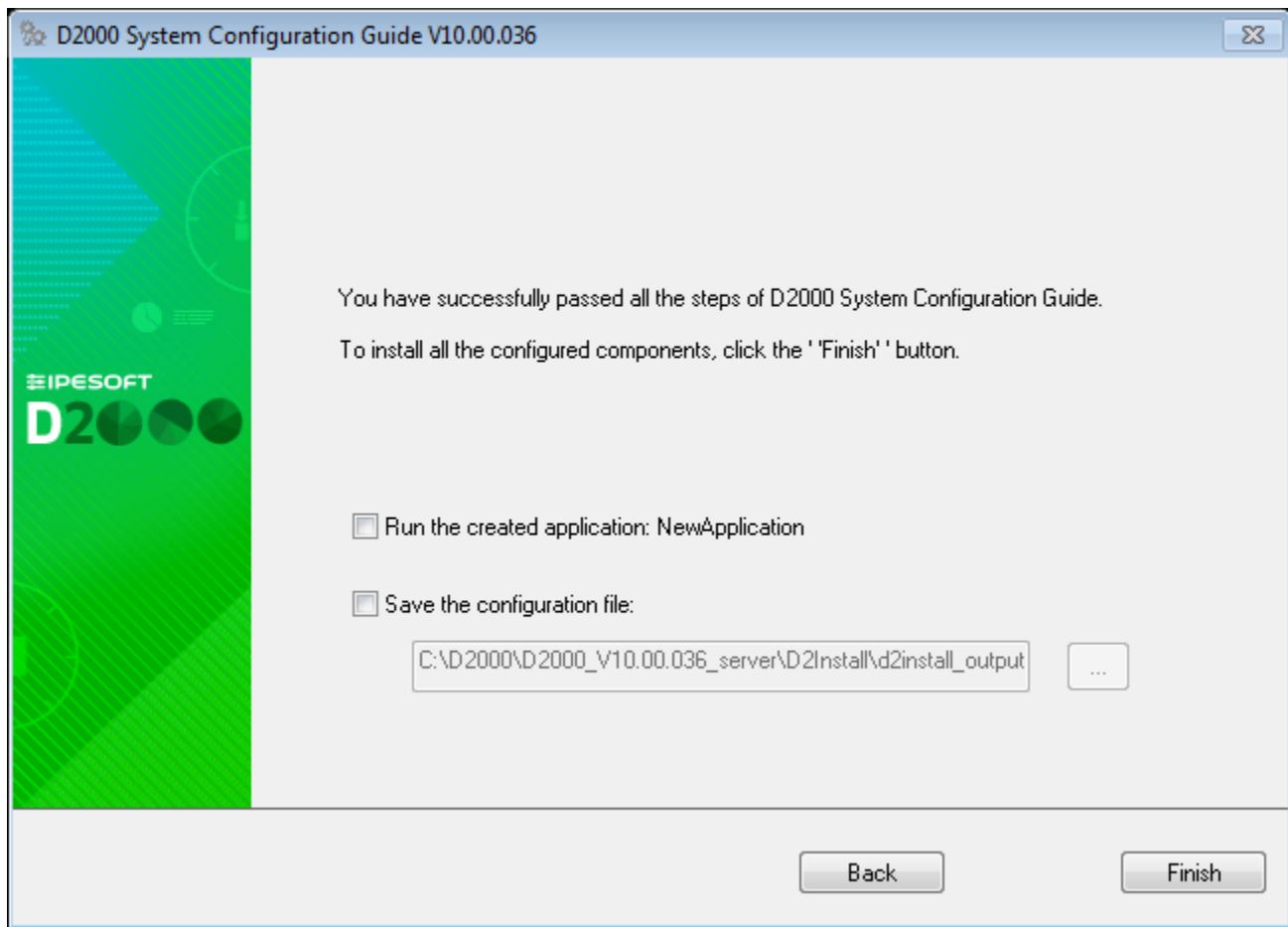
Password:

Help OK Cancel

The detailed parameters of remote client are described in the D2000 System Configuration Reference Manual.

Confirming a configuration

Before the final configuration, you must confirm the configuration.

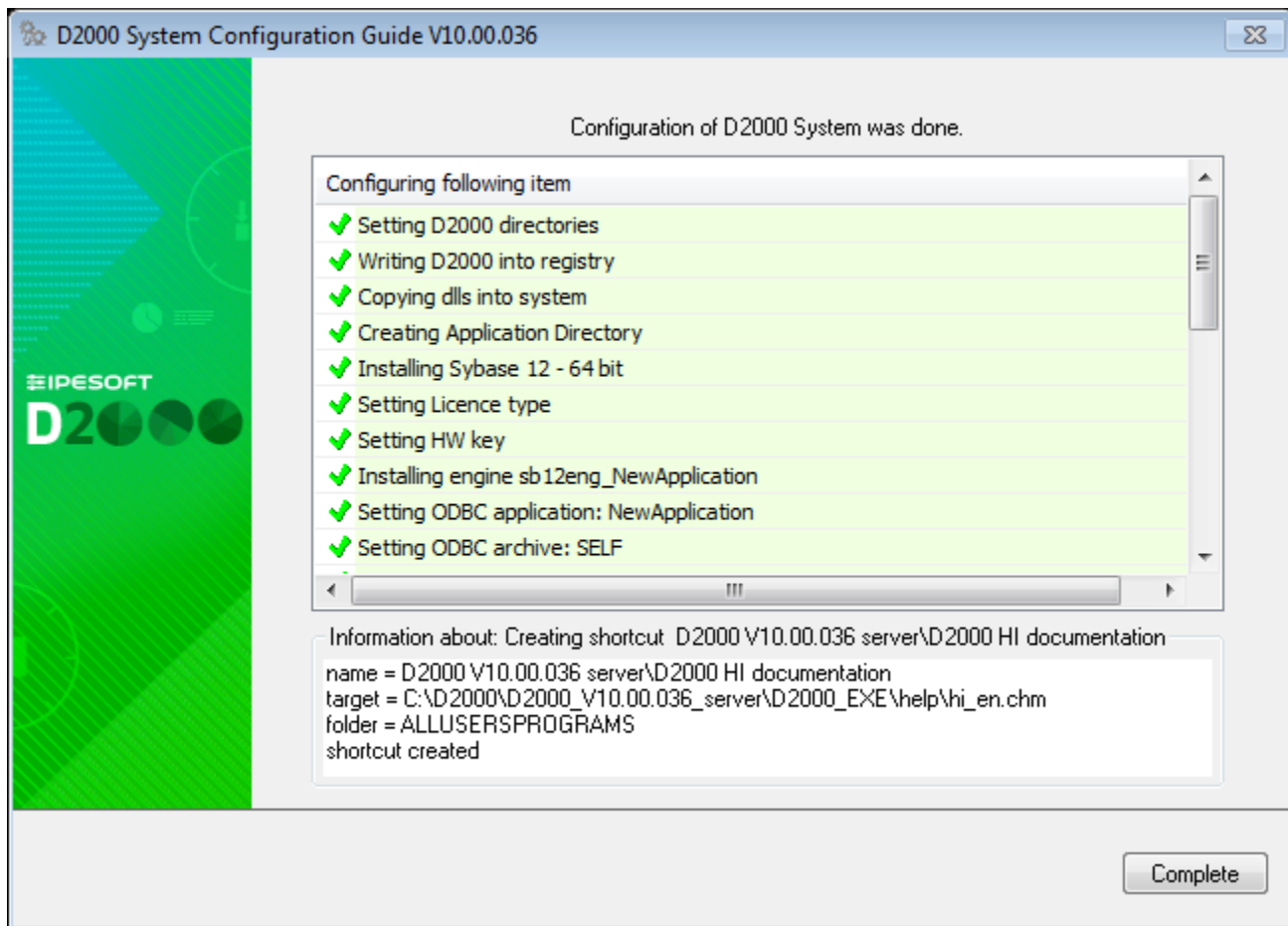


The user may start the application or save the final configuration file for further usage.

Regardless of user decision, the final configuration is always stored to the folder **D2Install** in a target directory where is an instance of installation.

Final configuration

The final configuration is done automatically. In the dialog window, the user can see the information about each step of configuration. It also displays the information about the success or failure of the given step.



After finishing the configuration, the **Complete** button to close the guide is enabled. In this step the instance of D2000 System is installed, configured and ready for use.



Related pages:

[D2Install - D2000 System Configuration Guide](#)