

Installation Procedure

D2000 System installation procedure

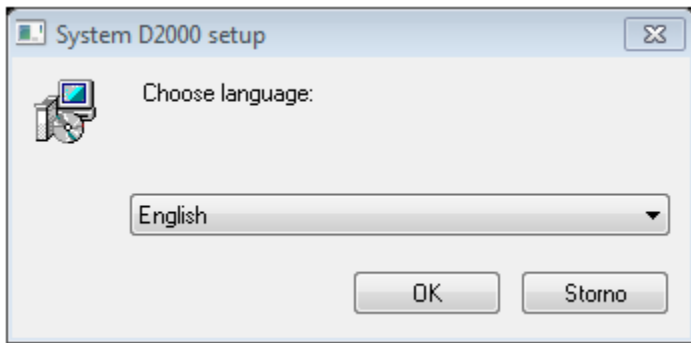
D2000 System is installed according to these steps:

1. [Start-up the installation](#)
2. [Registry check](#)
3. [Installation guide](#)
4. [License agreement](#)
5. [Instance manager](#)
6. [Type of installation](#)
[typ_instalacie](#)
7. [typ_instalacie](#)[Creating a new instance](#)
8. [Finalization](#)

1. Start-up the installation

The [installer](#) is started by the *setup_ips.exe* from the directory structure.

In the next step select the language, in which the installation will proceed.

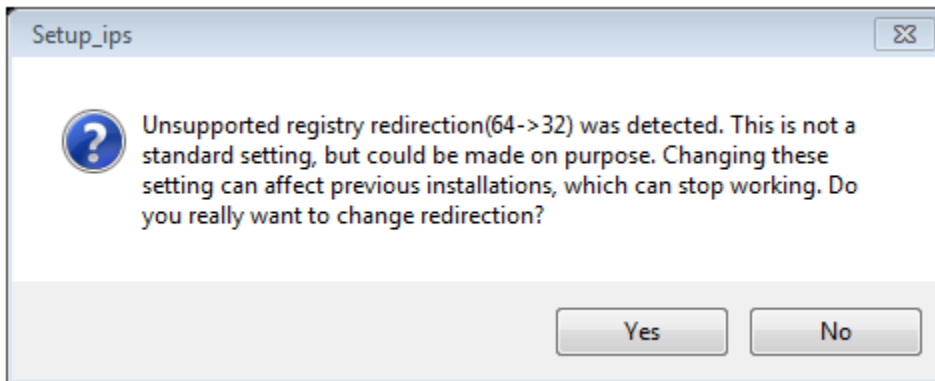


2. Registry check

After starting the installer, at first, the access to registers is checked. If this check fails, the installer is probably running with the insufficient rights. It must be installed with the administrator rights, as it works with the registry files and the file system. If a user has not the proper access rights, he is informed about it and the installation is stopped.

In the next step, the installer checks and sets the redirection of registers, as 64-bit operating systems contains both 32-bit and 64-bit registers, which are accessible depending on the running process (32-bit or 64-bit). D2000 System involves both 32-bit and 64-bit processes, therefore you must set the reading from just one of the registry type. Consequently, the reading is redirected to the registers corresponding to the operating system (i.e. 32-bit system -> 32-bit registers, 64-bit system -> 64-bit registers).

If this message occurs:



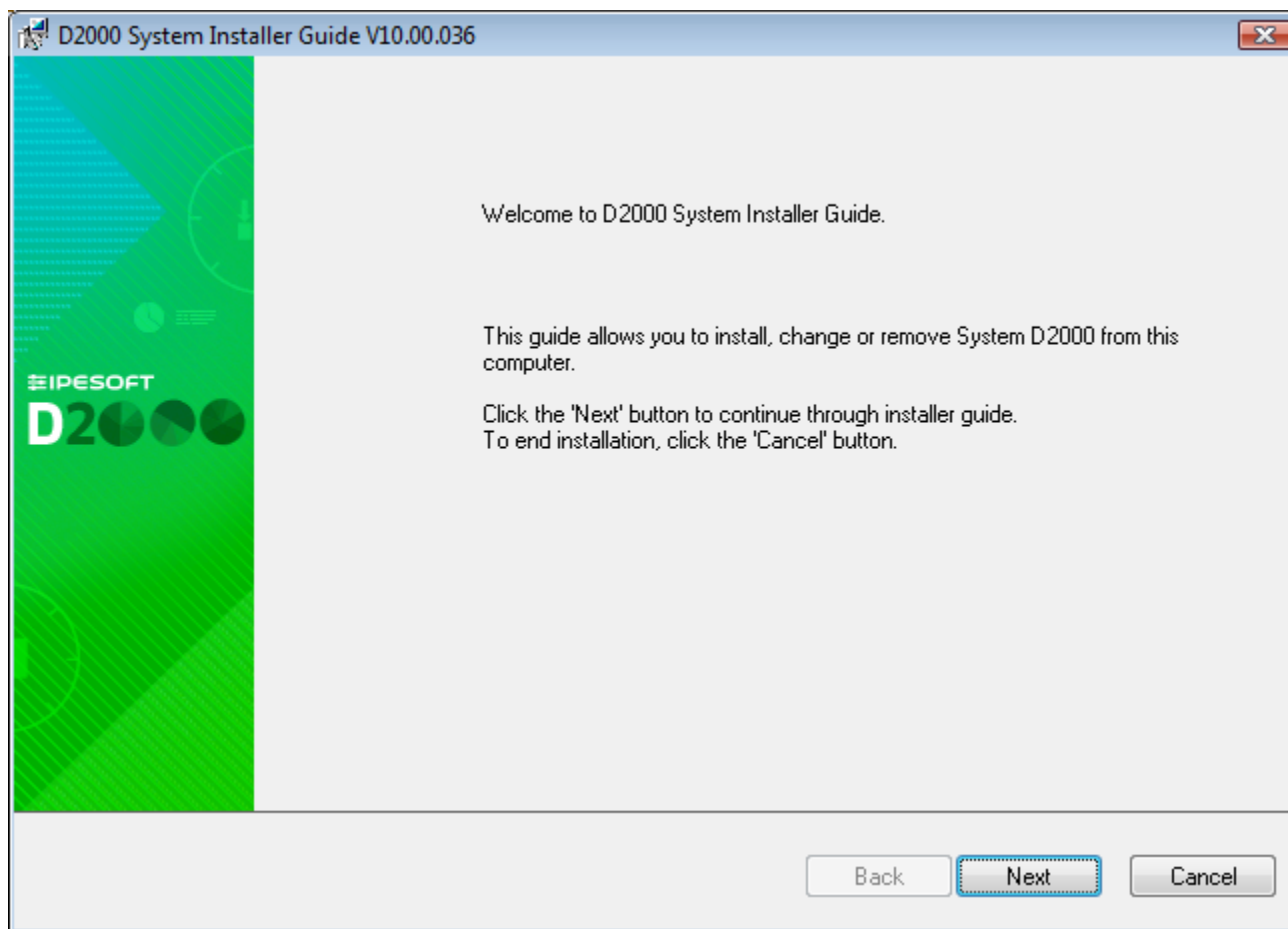
there is set the reverse redirection (all processes work with 32-bit registers). It means, the redirection has been already set before installation, however to the reverse value. In this case, the user should consider to keep these settings or not. If these settings remain, D2000 System instances, installed in the past, are functional, too. However, if any instances have not been installed, it is preferable to change this setting to the default value.

D2000 System is not dependent on the usage of 32-bit or 64-bit registers, but it cannot detect the change of this setting. Therefore, **we recommend you to use the same redirection for all instances of D2000 System and do not change it.**

Warning: The registry settings above mentioned remain changed only if D2000 System has been modified in a computer (i.e. installed, upgraded or uninstalled). If the user decides not to do any change and aborts the installation, the original settings remain.

3. D2000 System Installation Guide

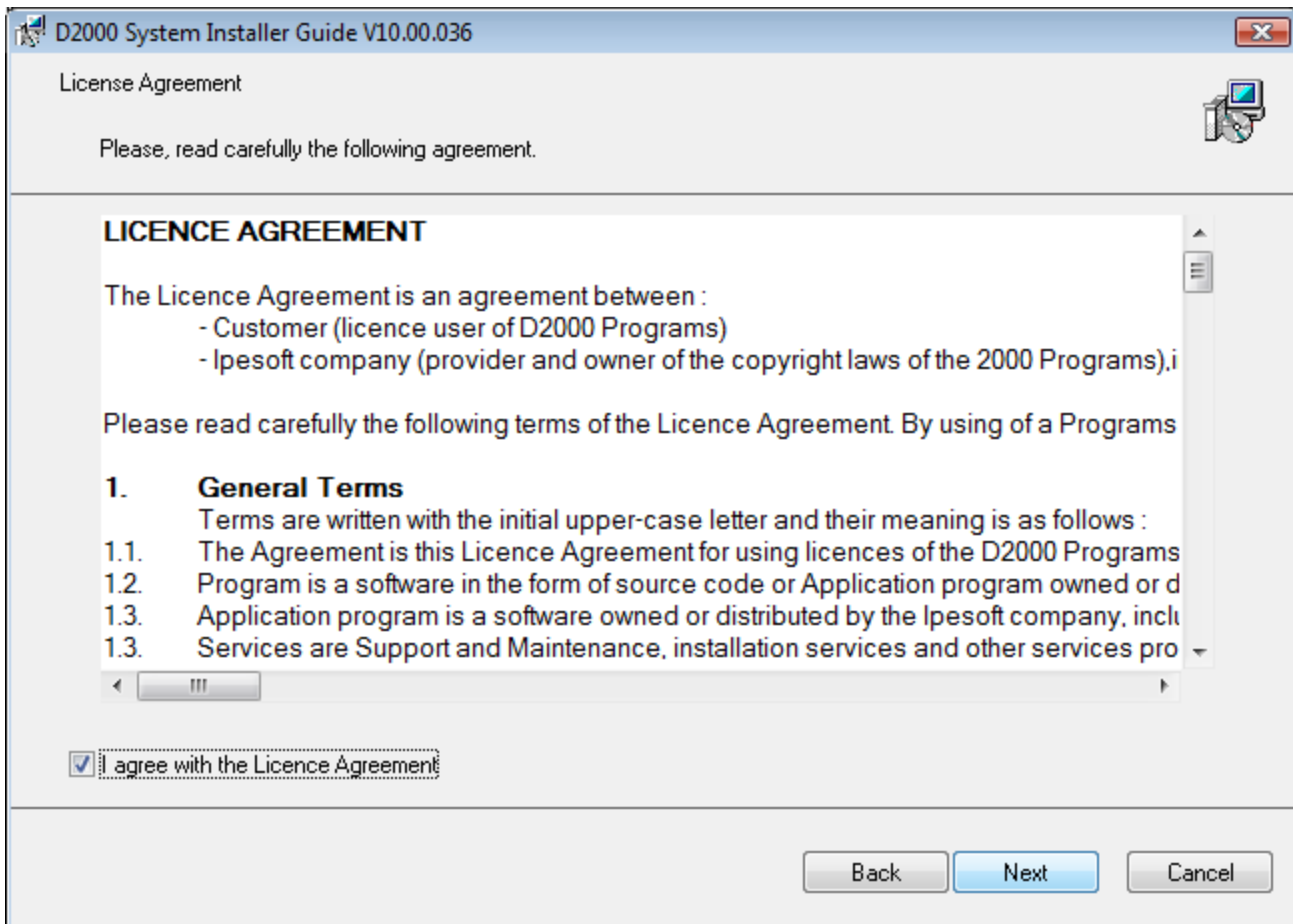
After you choose the language, the introductory window of installation guide opens.



The **installation guide** is a tool which leads the user through the installation process. You may use the buttons, placed on the bottom left, to move back or forward or to cancel the installation. The individual steps inform about the current status or require to define the installation parameters.

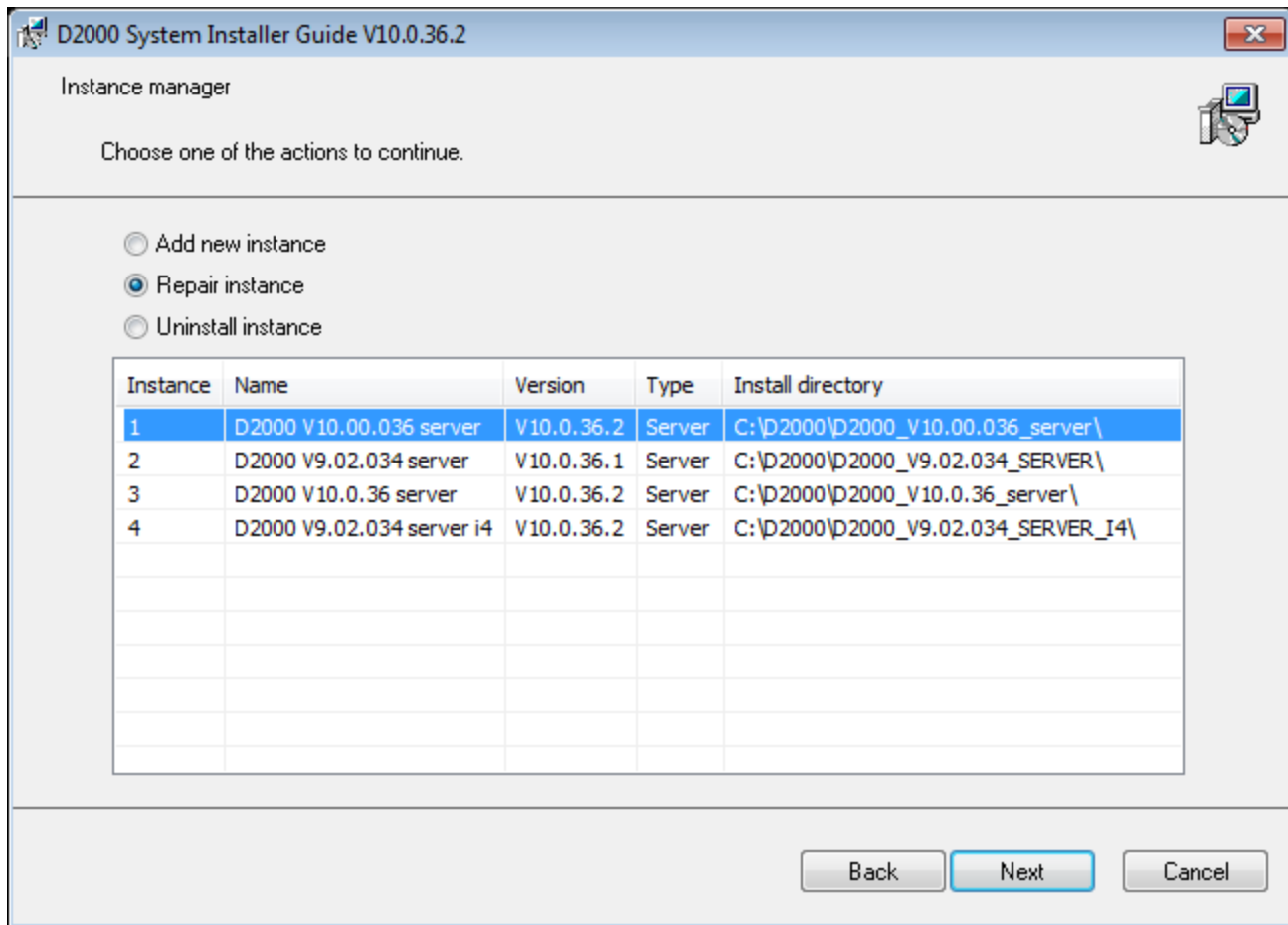
4. License agreement

The next dialog window contains the license agreement. To continue in the installation you should agree with the license agreement.



5. Instance manager

After you agree with the license agreement, the window opens to manage the instances. If any instance of D2000 System has not been installed yet, this dialog window is skipped and the other window opens to set the [new instance](#).



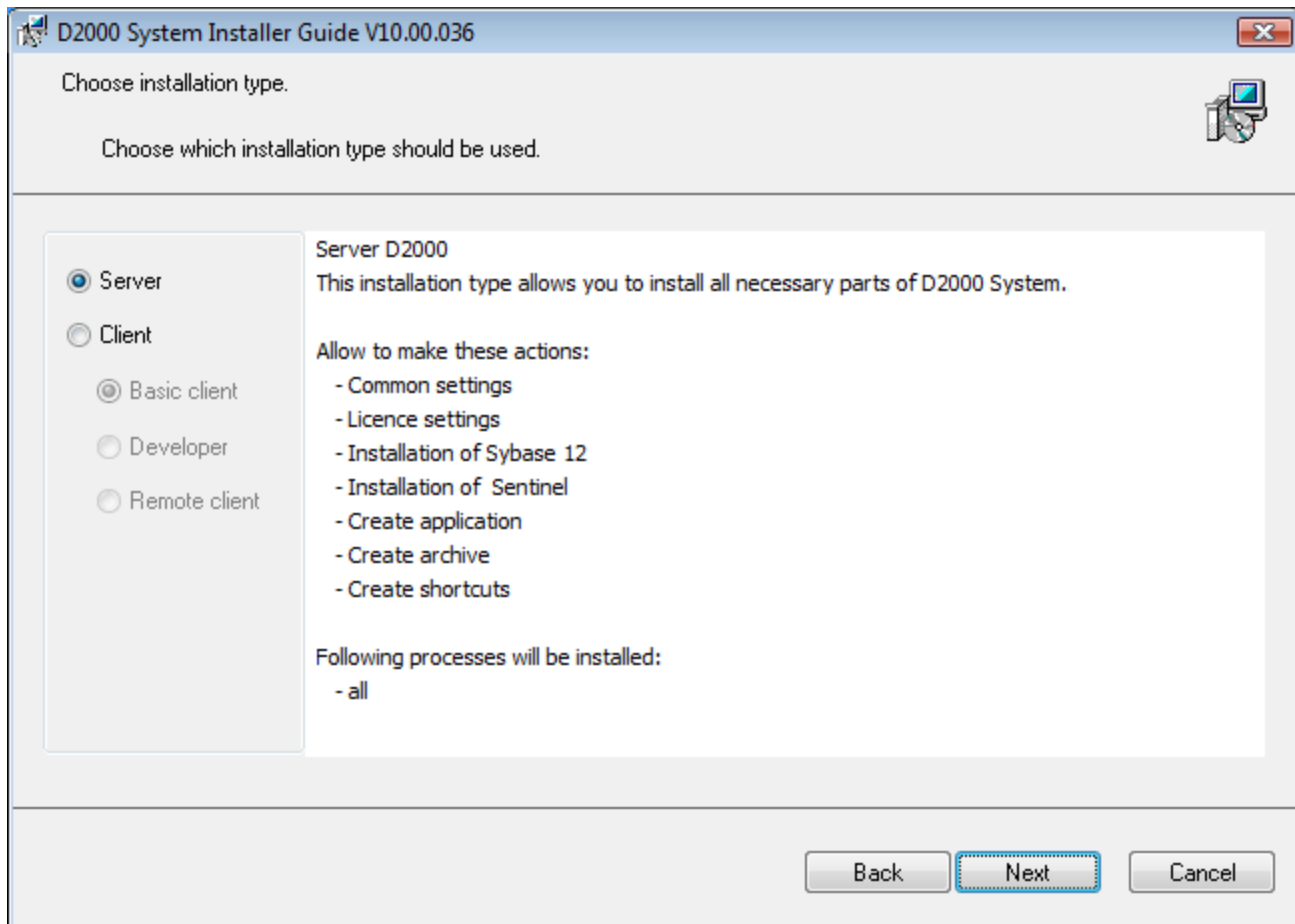
It enables to manage all instances of D2000 System on a computer. You may add, modify or remove the particular instances. To install a new instance of D2000 System, click on the parameter "Add a new instance". In case of changing the instance, the operation, which relates with the selected instance (i.e. "Repair instance", "Upgrade version" or "Downgrade version"), will be displayed. After selecting one of the options, or "Remove instance", the required operation will be started.

If any instance has already been installed on the computer, the option "Change instance" is automatically chosen. There may be installed up to 16 instances on one computer at the same time. If this number is achieved you cannot add a new instance, only change or remove the existing ones. The information about the instances are read from the registers, which contains their name, number and time of installation.

Warning: If you change the register redirection, this dialog window will not probably show the installed instances.

6. Type of installation

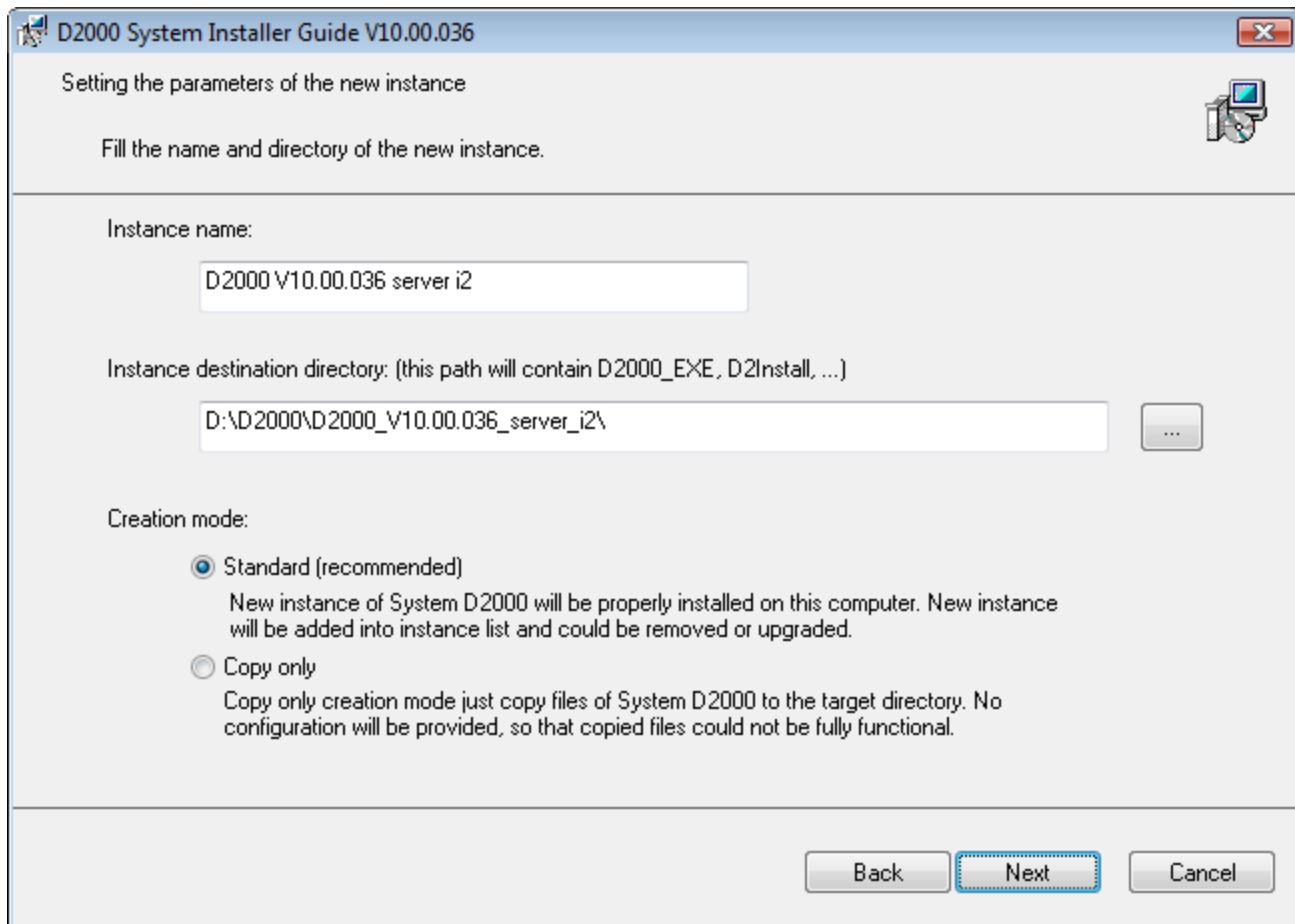
If you have chosen the option "Add new instance", this dialog window opens.



In the left part you may choose the type of installation that ensures installing the all necessary elements. Their short description is viewed in the right part.

7. Creating a new instance

After selecting the type of installation, the dialog box opens in which you have to set three parameters: Instance name, destination directory and creation mode.



The name of instance will be shown in the menu *Programs and features*.

A destination directory is a place, which will contain the directory structure of D2000 System (all necessary files and folders, e.g. D2000_EXE, D2Install, ExtInstallers, ...) after the installation of the instance. If this directory already contains any instance, the warning message occurs. The name and path to the destination directory cannot contain any blank space.

Warning: You should realize that if you install two instances into one directory, it may damage the files of one of them. Therefore, we do not recommend this way of installation!

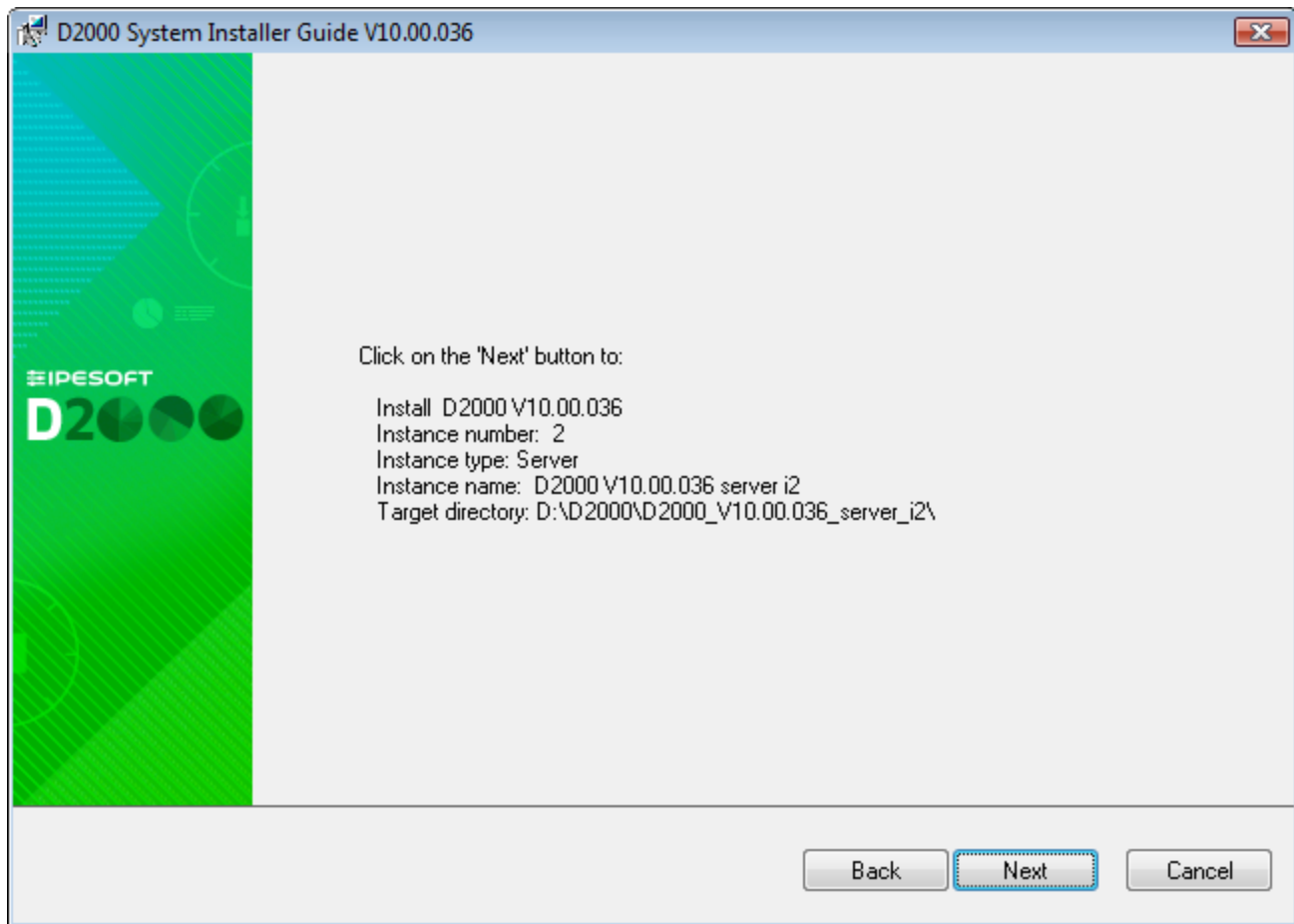
In this dialog window, a user may choose one of two **creation modes** of new instance:

1. **Standard** - this mode starts the standard installation that installs a new instance of D2000 System to the target workstation, registers it in the operating system and starts the configuration tool [D2install](#).
2. **Copy only** - special mode for creating the installation. It causes copying binary files to the target workstation but does not register the system in the operating system. Moreover the configuration tool is not started. This mode is recommended only in very specific situations, as D2000 System in this state is non-functional. No instance of such created D2000 System occurs in [Instance manager](#) and it can be uninstalled manually by deleting the copied files from the directory.

8. Finalization

The last dialog window provides the information about the action which is going to be done, the version of the resultant instance, its number, name and destination directory to which it will be installed.

After you click on "Next" button, the installation file *d2msi.msi* is started. Its task is to install, change or remove the chosen instance of D2000 System.



In case of change or installation of D2000 System, [D2Install - Configuration Guide](#) is started automatically.



Related pages:

[Setup_ips - D2000 System Installation Guide](#)