

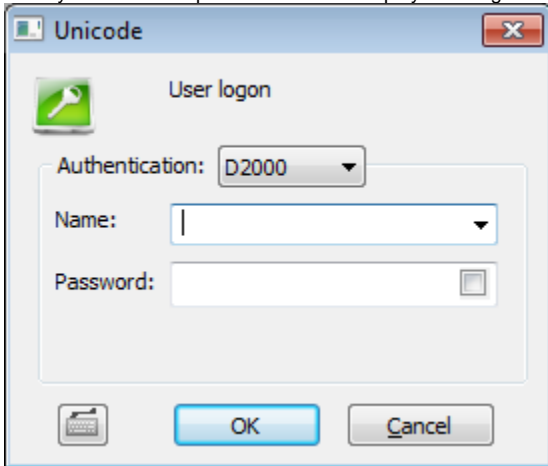
Logon to the process UPM

!!! WARNING: Process D2000 UPM is substituted by D2000 CNF !!!

Before working with the process [D2000 UPM](#), it is necessary to log on. To work with the process [D2000 UPM](#), the user must have the *administrator* access rights.

The logon dialog box is displayed after starting the process [D2000 UPM](#). If the dialog box is not opened (e.g. after logoff from the process), use the following procedure to log on to the process [D2000 UPM](#):

1. Select **Logon** item from **System** menu.
2. Enter your name and password into the displayed dialog box.



User's logon to the process [D2000 UPM](#) is executed after entering the user's name and password. All disabled items in the menus are to be available.



Related pages:

[D2000 UPM](#)